

# PRINCE GEORGES COUNTY

## Residential Market Report

# HOUSING REPORT

## Single Family Homes

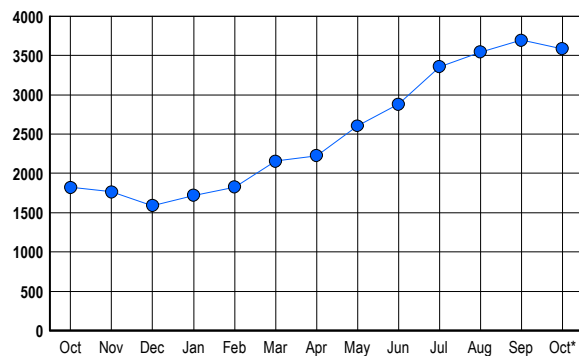
### October 2006

### LISTINGS

Prices Range	New This Month			Total Actives		
	2006	2005	% Change	2006	2005	% Change
0 - 149,999	5	24	-79.2	7	22	-68.2
150,000 - 199,999	20	68	-70.6	28	53	-47.2
200,000 - 299,999	300	376	-20.2	457	313	46.0
300,000 - 399,999	607	604	0.5	1,393	721	93.2
400,000 - 499,999	293	205	42.9	734	283	159.4
500,000 - 599,999	134	110	21.8	422	194	117.5
600,000 - 699,999	73	54	35.2	295	111	165.8
700,000 - 799,999	29	23	26.1	119	51	133.3
800,000 - 899,999	13	7	85.7	54	30	80.0
900,000 - 999,999	4	7	-42.9	19	12	58.3
1,000,000 - 1,249,999	2	6	-66.7	24	14	71.4
1,250,000 - 1,499,999	5	2	150.0	15	3	400.0
1,500,000 +	2	4	-50.0	19	15	26.7
<b>TOTALS</b>	<b>1487</b>	<b>1490</b>	<b>-0.2</b>	<b>3586</b>	<b>1822</b>	<b>96.8</b>

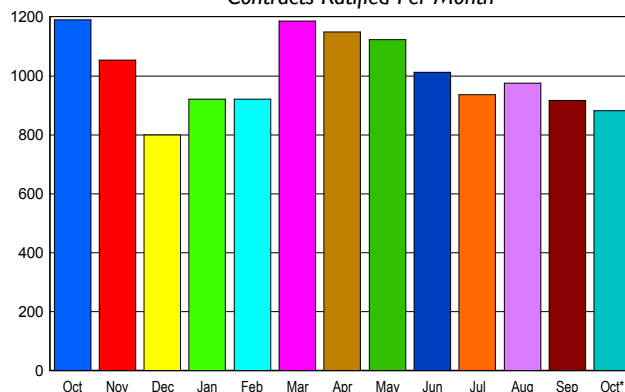
### INVENTORY TREND

Listings Active at End of Month



### SALES TREND

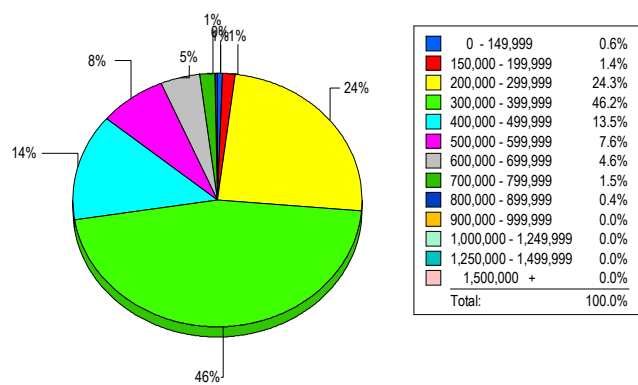
Contracts Ratified Per Month



### CONTRACTS

Price Range	New This Month			Year-To-Date		
	2006	2005	% Change	2006	2005	% Change
0 - 149,999	3	17	-82.4	62	277	-77.6
150,000 - 199,999	16	61	-73.8	271	946	-71.4
200,000 - 299,999	235	370	-36.5	2,397	3,846	-37.7
300,000 - 399,999	406	489	-17.0	4,210	3,944	6.7
400,000 - 499,999	123	142	-13.4	1,322	1,069	23.7
500,000 - 599,999	48	65	-26.2	615	595	3.4
600,000 - 699,999	38	29	31.0	307	205	49.8
700,000 - 799,999	11	11	0.0	93	72	29.2
800,000 - 899,999	1	2	-50.0	34	20	70.0
900,000 - 999,999	0	1	-100.0	15	7	114.3
1,000,000 - 1,249,999	0	3	-100.0	10	6	66.7
1,250,000 - 1,499,999	0	0	0.0	7	3	133.3
1,500,000 +	0	1	-100.0	2	8	-75.0
<b>TOTALS</b>	<b>881</b>	<b>1191</b>	<b>-26.0</b>	<b>9345</b>	<b>10998</b>	<b>-15.0</b>

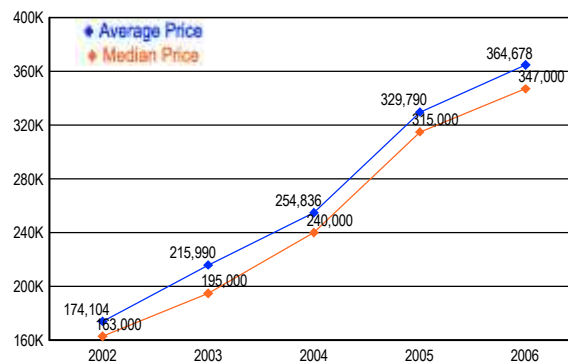
### MARKET BY PRICE RANGE



### SETTLEMENTS

Price Range	New This Month			Year-to-Date		
	2006	2005	% Change	2006	2005	% Change
0 - 149,999	5	10	-50.0	61	304	-79.9
150,000 - 199,999	11	60	-81.7	271	852	-68.2
200,000 - 299,999	196	280	-30.0	2,268	3,609	-37.2
300,000 - 399,999	372	457	-18.6	4,124	3,811	8.2
400,000 - 499,999	109	110	-0.9	1,353	1,057	28.0
500,000 - 599,999	61	69	-11.6	609	567	7.4
600,000 - 699,999	37	26	42.3	303	182	66.5
700,000 - 799,999	12	12	0.0	101	67	50.7
800,000 - 899,999	3	2	50.0	38	17	123.5
900,000 - 999,999	0	1	-100.0	13	5	160.0
1,000,000 - 1,249,999	0	0	0.0	13	6	116.7
1,250,000 - 1,499,999	0	0	0.0	5	0	500.0
1,500,000 +	0	1	-100.0	2	8	-75.0
<b>TOTALS</b>	<b>806</b>	<b>1028</b>	<b>-21.6</b>	<b>9161</b>	<b>10485</b>	<b>-12.6</b>

### AVERAGE & MEDIAN PRICE



DATA SOURCE: Metropolitan Regional Information Systems, Inc. (MRIS)

NOTES: Properties not listed through this Multiple Listing Service are not reflected. The term "sales" represents ratified purchase contracts. Current year information is preliminary and subject to revision. Current year-to-date contract information may not equal the sum of the monthly contract totals reported in