

PRINCE GEORGES COUNTY

Residential Market Report

HOUSING REPORT

Single Family Homes

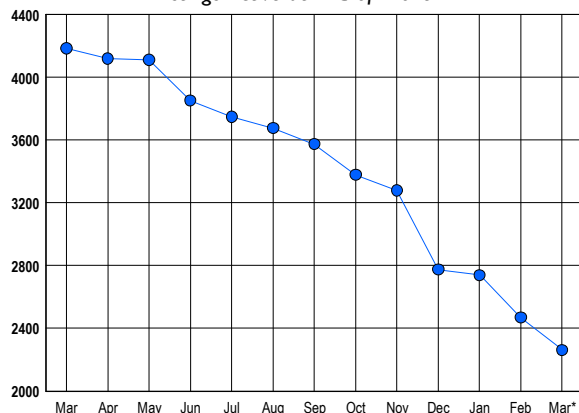
March 2012

LISTINGS

Prices Range	New This Month			Total Actives		
	2012	2011	% Change	2012	2011	% Change
0 - 149,999	283	406	-30.3	535	1,232	-56.6
150,000 - 199,999	234	261	-10.3	487	916	-46.8
200,000 - 299,999	268	374	-28.3	609	1,116	-45.4
300,000 - 399,999	112	145	-22.8	297	495	-40.0
400,000 - 499,999	45	56	-19.6	187	227	-17.6
500,000 - 599,999	20	31	-35.5	74	89	-16.9
600,000 - 699,999	7	17	-58.8	30	40	-25.0
700,000 - 799,999	1	14	-92.9	22	32	-31.3
800,000 - 899,999	3	4	-25.0	4	12	-66.7
900,000 - 999,999	0	1	-100.0	7	4	75.0
1,000,000 - 1,249,999	0	1	-100.0	2	13	-84.6
1,250,000 - 1,499,999	0	1	-100.0	1	4	-75.0
1,500,000 +	3	1	200.0	7	4	75.0
TOTALS	976	1312	-25.6	2262	4184	-45.9

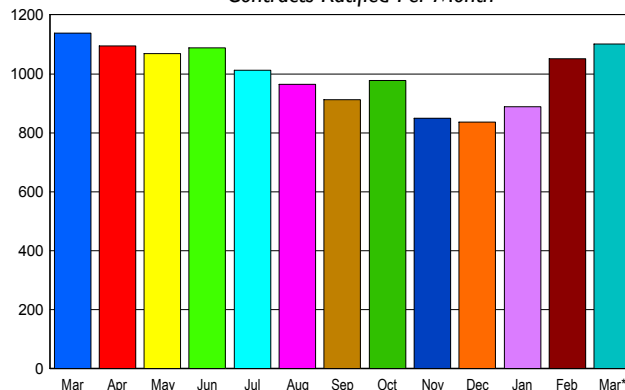
INVENTORY TREND

Listings Active at End of Month



SALES TREND

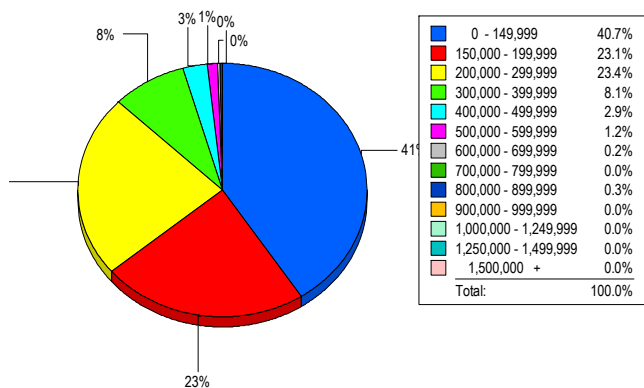
Contracts Ratified Per Month



CONTRACTS

Price Range	New This Month			Year-To-Date		
	2012	2011	% Change	2012	2011	% Change
0 - 149,999	457	490	-6.7	1,150	1,100	4.5
150,000 - 199,999	239	248	-3.6	665	550	20.9
200,000 - 299,999	270	264	2.3	635	570	11.4
300,000 - 399,999	95	95	0.0	244	249	-2.0
400,000 - 499,999	29	26	11.5	82	93	-11.8
500,000 - 599,999	5	9	-44.4	25	23	8.7
600,000 - 699,999	3	5	-40.0	10	9	11.1
700,000 - 799,999	0	1	-100.0	4	3	33.3
800,000 - 899,999	2	1	100.0	2	1	100.0
900,000 - 999,999	0	0	0.0	0	0	0.0
1,000,000 - 1,249,999	0	0	0.0	0	0	0.0
1,250,000 - 1,499,999	0	0	0.0	0	0	0.0
1,500,000 +	0	0	0.0	0	0	0.0
TOTALS	1100	1139	-3.4	2817	2598	8.4

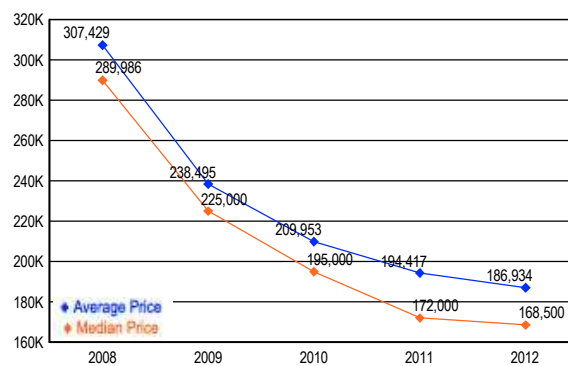
MARKET BY PRICE RANGE



SETTLEMENTS

Price Range	New This Month			Year-to-Date		
	2012	2011	% Change	2012	2011	% Change
0 - 149,999	240	267	-10.1	641	673	-4.8
150,000 - 199,999	136	125	8.8	370	330	12.1
200,000 - 299,999	138	145	-4.8	368	380	-3.2
300,000 - 399,999	48	61	-21.3	130	168	-22.6
400,000 - 499,999	17	27	-37.0	44	72	-38.9
500,000 - 599,999	7	7	0.0	18	21	-14.3
600,000 - 699,999	1	2	-50.0	8	5	60.0
700,000 - 799,999	0	0	0.0	2	1	100.0
800,000 - 899,999	2	0	200.0	3	0	300.0
900,000 - 999,999	0	0	0.0	0	0	0.0
1,000,000 - 1,249,999	0	0	0.0	0	0	0.0
1,250,000 - 1,499,999	0	0	0.0	0	1	-100.0
1,500,000 +	0	0	0.0	0	0	0.0
TOTALS	589	634	-7.1	1584	1651	-4.1

AVERAGE & MEDIAN PRICE



DATA SOURCE: Metropolitan Regional Information Systems, Inc. (MRIS)

NOTES: Properties not listed through this Multiple Listing Service are not reflected. The term "sales" represents ratified purchase contracts. Current year information is preliminary and subject to revision. Current year- to- date contract information may not equal the sum of the monthly contract totals reported in