

PRINCE GEORGES COUNTY

Residential Market Report

HOUSING REPORT

Single Family Homes

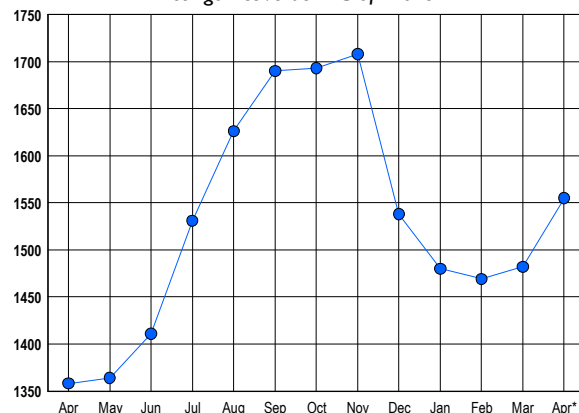
April 2014

LISTINGS

Prices Range	New This Month			Total Actives		
	2014	2013	% Change	2014	2013	% Change
0 - 149,999	147	195	-24.6	147	196	-25.0
150,000 - 199,999	154	177	-13.0	195	211	-7.6
200,000 - 299,999	340	341	-0.3	452	369	22.5
300,000 - 399,999	195	159	22.6	347	261	33.0
400,000 - 499,999	91	87	4.6	225	180	25.0
500,000 - 599,999	40	21	90.5	100	59	69.5
600,000 - 699,999	12	6	100.0	38	38	0.0
700,000 - 799,999	8	4	100.0	23	14	64.3
800,000 - 899,999	4	1	300.0	14	5	180.0
900,000 - 999,999	0	2	-100.0	3	11	-72.7
1,000,000 - 1,249,999	0	2	-100.0	2	5	-60.0
1,250,000 - 1,499,999	1	1	0.0	4	2	100.0
1,500,000 +	2	1	100.0	5	7	-28.6
TOTALS	994	997	-0.3	1555	1358	14.5

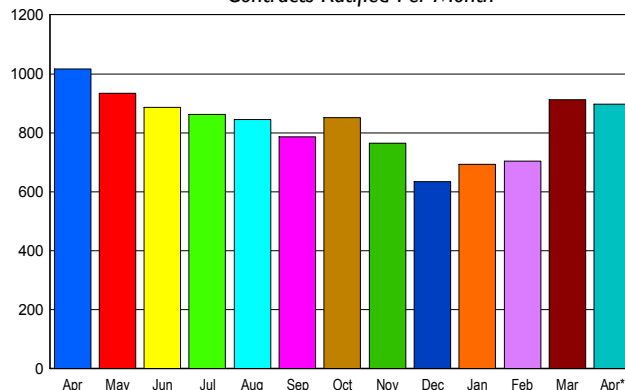
INVENTORY TREND

Listings Active at End of Month



SALES TREND

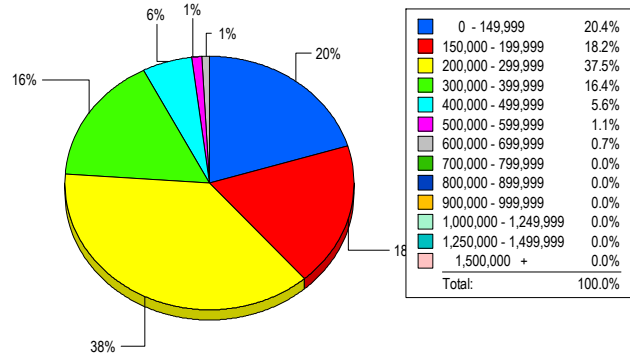
Contracts Ratified Per Month



CONTRACTS

Price Range	New This Month			Year-To-Date		
	2014	2013	% Change	2014	2013	% Change
0 - 149,999	164	253	-35.2	573	966	-40.7
150,000 - 199,999	192	220	-12.7	636	703	-9.5
200,000 - 299,999	334	349	-4.3	1,001	986	1.5
300,000 - 399,999	138	135	2.2	441	410	7.6
400,000 - 499,999	43	36	19.4	158	142	11.3
500,000 - 599,999	19	16	18.8	52	41	26.8
600,000 - 699,999	4	5	-20.0	14	17	-17.6
700,000 - 799,999	3	3	0.0	6	9	-33.3
800,000 - 899,999	0	0	0.0	1	2	-50.0
900,000 - 999,999	0	0	0.0	0	0	0.0
1,000,000 - 1,249,999	0	0	0.0	0	1	-100.0
1,250,000 - 1,499,999	0	0	0.0	0	0	0.0
1,500,000 +	0	0	0.0	0	0	0.0
TOTALS	897	1017	-11.8	2882	3277	-12.1

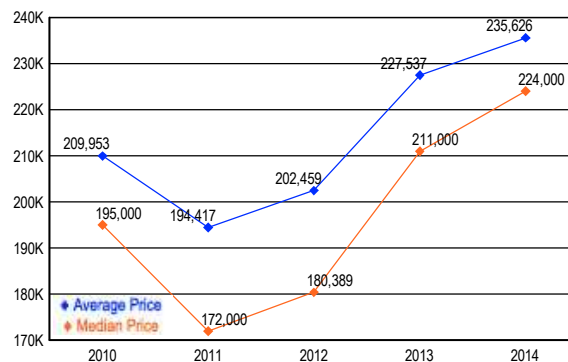
MARKET BY PRICE RANGE



SETTLEMENTS

Price Range	New This Month			Year-to-Date		
	2014	2013	% Change	2014	2013	% Change
0 - 149,999	112	173	-35.3	389	701	-44.5
150,000 - 199,999	100	136	-26.5	401	511	-21.5
200,000 - 299,999	206	200	3.0	699	670	4.3
300,000 - 399,999	90	73	23.3	276	260	6.2
400,000 - 499,999	31	31	0.0	100	81	23.5
500,000 - 599,999	6	7	-14.3	29	17	70.6
600,000 - 699,999	4	2	100.0	12	9	33.3
700,000 - 799,999	0	2	-100.0	2	4	-50.0
800,000 - 899,999	0	1	-100.0	1	4	-75.0
900,000 - 999,999	0	0	0.0	0	0	0.0
1,000,000 - 1,249,999	0	0	0.0	0	0	0.0
1,250,000 - 1,499,999	0	0	0.0	0	0	0.0
1,500,000 +	0	0	0.0	0	0	0.0
TOTALS	549	625	-12.2	1909	2257	-15.4

AVERAGE & MEDIAN PRICE



DATA SOURCE: Metropolitan Regional Information Systems, Inc. (MRIS)

NOTES: Properties not listed through this Multiple Listing Service are not reflected. The term "sales" represents ratified purchase contracts. Current year information is preliminary and subject to revision. Current year-to-date contract information may not equal the sum of the monthly contract totals reported in