

PRINCE GEORGES COUNTY

Residential Market Report

HOUSING REPORT

Single Family Homes

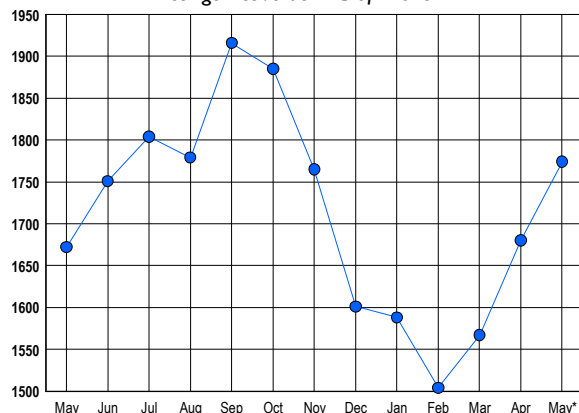
May 2015

LISTINGS

Prices Range	New This Month			Total Actives		
	2015	2014	% Change	2015	2014	% Change
0 - 149,999	105	109	-3.7	169	162	4.3
150,000 - 199,999	153	152	0.7	213	196	8.7
200,000 - 299,999	426	356	19.7	535	501	6.8
300,000 - 399,999	251	203	23.6	375	380	-1.3
400,000 - 499,999	102	99	3.0	268	238	12.6
500,000 - 599,999	32	17	88.2	118	99	19.2
600,000 - 699,999	8	11	-27.3	37	43	-14.0
700,000 - 799,999	4	2	100.0	26	21	23.8
800,000 - 899,999	0	3	-100.0	13	14	-7.1
900,000 - 999,999	1	3	-66.7	7	6	16.7
1,000,000 - 1,249,999	1	2	-50.0	5	4	25.0
1,250,000 - 1,499,999	1	0	100.0	3	1	200.0
1,500,000 +	0	1	-100.0	5	7	-28.6
TOTALS	1084	958	13.2	1774	1672	6.1

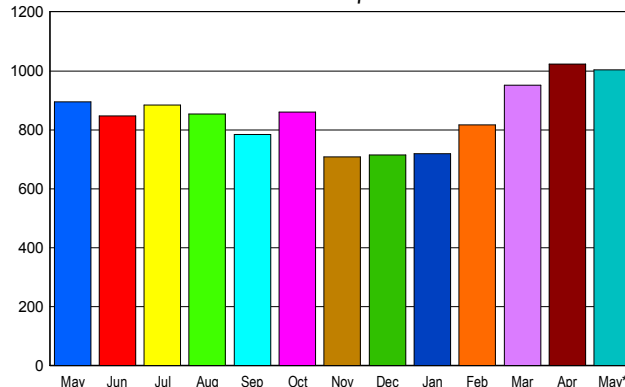
INVENTORY TREND

Lists Active at End of Month



SALES TREND

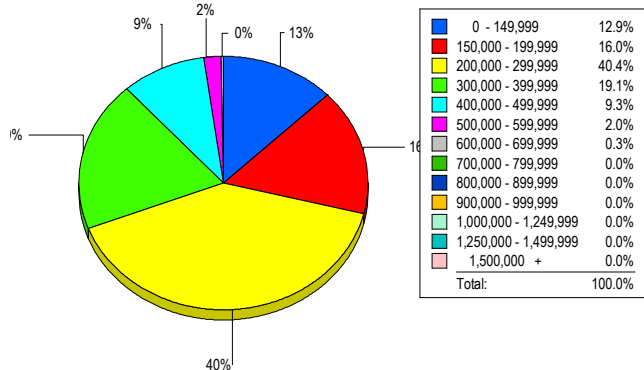
Contracts Ratified Per Month



CONTRACTS

Price Range	New This Month			Year-To-Date		
	2015	2014	% Change	2015	2014	% Change
0 - 149,999	132	138	-4.3	538	655	-17.9
150,000 - 199,999	173	185	-6.5	787	764	3.0
200,000 - 299,999	410	320	28.1	1,525	1,256	21.4
300,000 - 399,999	196	154	27.3	719	554	29.8
400,000 - 499,999	69	65	6.2	285	214	33.2
500,000 - 599,999	16	18	-11.1	64	69	-7.2
600,000 - 699,999	6	9	-33.3	25	21	19.0
700,000 - 799,999	1	2	-50.0	5	8	-37.5
800,000 - 899,999	1	3	-66.7	1	3	-66.7
900,000 - 999,999	0	0	0.0	0	0	0.0
1,000,000 - 1,249,999	0	0	0.0	0	0	0.0
1,250,000 - 1,499,999	0	0	0.0	0	0	0.0
1,500,000 +	0	0	0.0	1	0	100.0
TOTALS	1004	894	12.3	3950	3544	11.5

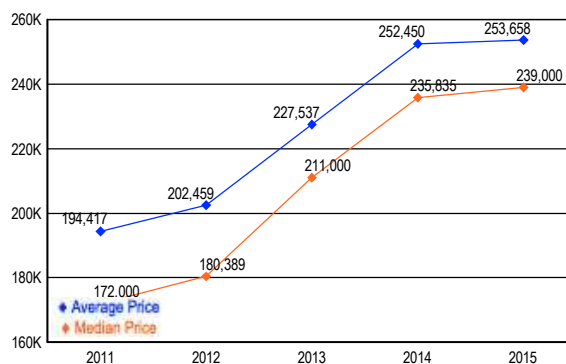
MARKET BY PRICE RANGE



SETTLEMENTS

Price Range	New This Month			Year-to-Date		
	2015	2014	% Change	2015	2014	% Change
0 - 149,999	83	90	-7.8	386	483	-20.1
150,000 - 199,999	103	119	-13.4	573	525	9.1
200,000 - 299,999	260	221	17.6	1,187	931	27.5
300,000 - 399,999	123	105	17.1	491	386	27.2
400,000 - 499,999	60	31	93.5	213	134	59.0
500,000 - 599,999	13	17	-23.5	48	46	4.3
600,000 - 699,999	2	2	0.0	22	15	46.7
700,000 - 799,999	0	3	-100.0	4	5	-20.0
800,000 - 899,999	0	2	-100.0	1	3	-66.7
900,000 - 999,999	0	0	0.0	0	0	0.0
1,000,000 - 1,249,999	0	0	0.0	0	0	0.0
1,250,000 - 1,499,999	0	0	0.0	1	0	100.0
1,500,000 +	0	0	0.0	1	0	100.0
TOTALS	644	590	9.2	2927	2528	15.8

AVERAGE & MEDIAN PRICE



DATA SOURCE: Metropolitan Regional Information Systems, Inc. (MRIS)

NOTES: Properties not listed through this Multiple Listing Service are not reflected. The term "sales" represents ratified purchase contracts. Current year information is preliminary and subject to revision. Current year-to-date contract information may not equal the sum of the monthly contract totals reported in