

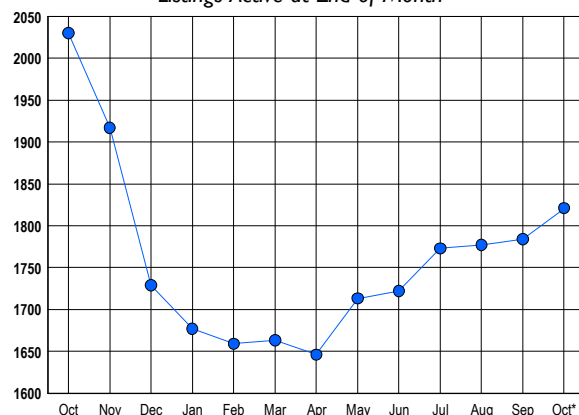


### LISTINGS

Prices Range	New This Month			Total Actives		
	2016	2015	% Change	2016	2015	% Change
0 - 149,999	61	90	-32.2	91	169	-46.2
150,000 - 199,999	109	144	-24.3	124	251	-50.6
200,000 - 299,999	393	404	-2.7	547	634	-13.7
300,000 - 399,999	291	220	32.3	523	449	16.5
400,000 - 499,999	106	80	32.5	288	288	0.0
500,000 - 599,999	33	28	17.9	124	126	-1.6
600,000 - 699,999	19	12	58.3	73	60	21.7
700,000 - 799,999	3	9	-66.7	26	26	0.0
800,000 - 899,999	4	3	33.3	7	15	-53.3
900,000 - 999,999	0	1	-100.0	4	2	100.0
1,000,000 - 1,249,999	0	1	-100.0	7	5	40.0
1,250,000 - 1,499,999	0	0	0.0	2	1	100.0
1,500,000 +	0	0	0.0	5	4	25.0
<b>TOTALS</b>	<b>1019</b>	<b>992</b>	<b>2.7</b>	<b>1821</b>	<b>2030</b>	<b>-10.3</b>

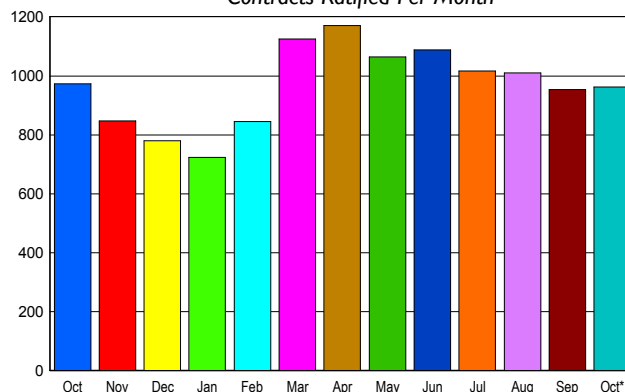
### INVENTORY TREND

Listings Active at End of Month



### SALES TREND

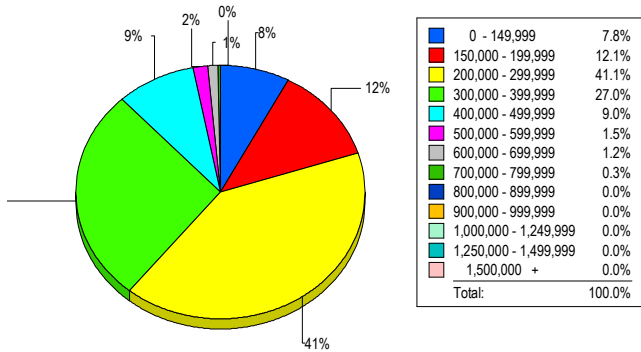
Contracts Ratified Per Month



### CONTRACTS

Price Range	New This Month			Year-To-Date		
	2016	2015	% Change	2016	2015	% Change
0 - 149,999	87	118	-26.3	839	958	-12.4
150,000 - 199,999	134	188	-28.7	1,177	1,396	-15.7
200,000 - 299,999	422	369	14.4	3,358	3,003	11.8
300,000 - 399,999	198	188	5.3	1,909	1,476	29.3
400,000 - 499,999	95	79	20.3	764	591	29.3
500,000 - 599,999	17	18	-5.6	195	140	39.3
600,000 - 699,999	6	6	0.0	66	50	32.0
700,000 - 799,999	3	2	50.0	21	15	40.0
800,000 - 899,999	1	2	-50.0	6	5	20.0
900,000 - 999,999	0	1	-100.0	1	3	-66.7
1,000,000 - 1,249,999	0	0	0.0	1	0	100.0
1,250,000 - 1,499,999	0	0	0.0	0	0	0.0
1,500,000 +	0	1	-100.0	0	3	-100.0
<b>TOTALS</b>	<b>963</b>	<b>972</b>	<b>-0.9</b>	<b>8337</b>	<b>7640</b>	<b>9.1</b>

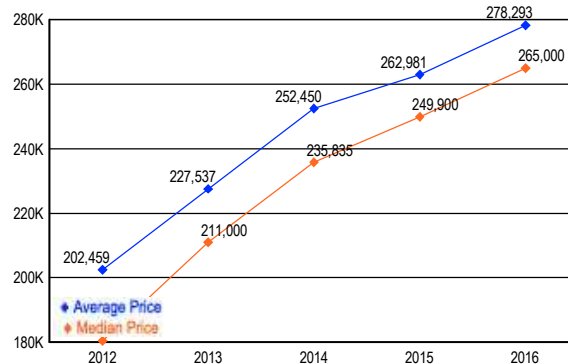
### MARKET BY PRICE RANGE



### SETTLEMENTS

Price Range	New This Month			Year-to-Date		
	2016	2015	% Change	2016	2015	% Change
0 - 149,999	57	92	-38.0	751	842	-10.8
150,000 - 199,999	88	104	-15.4	1,078	1,171	-7.9
200,000 - 299,999	300	281	6.8	3,017	2,756	9.5
300,000 - 399,999	197	134	47.0	1,778	1,271	39.9
400,000 - 499,999	66	52	26.9	739	517	42.9
500,000 - 599,999	11	17	-35.3	163	127	28.3
600,000 - 699,999	9	2	350.0	84	50	68.0
700,000 - 799,999	2	5	-60.0	13	18	-27.8
800,000 - 899,999	0	0	0.0	4	5	-20.0
900,000 - 999,999	0	0	0.0	3	0	300.0
1,000,000 - 1,249,999	0	0	0.0	0	0	0.0
1,250,000 - 1,499,999	0	0	0.0	0	1	-100.0
1,500,000 +	0	0	0.0	0	2	-100.0
<b>TOTALS</b>	<b>730</b>	<b>687</b>	<b>6.3</b>	<b>7630</b>	<b>6760</b>	<b>12.9</b>

### AVERAGE & MEDIAN PRICE



DATA SOURCE: Metropolitan Regional Information Systems, Inc. (MRIS)

NOTES: Properties not listed through this Multiple Listing Service are not reflected. The term "sales" represents ratified purchase contracts. Current year information is preliminary and subject to revision. Current year-to-date contract information may not equal the sum of the monthly contract totals reported in