

# PRINCE GEORGES COUNTY HOUSING REPORT

## Residential Market Report

### Single Family Homes

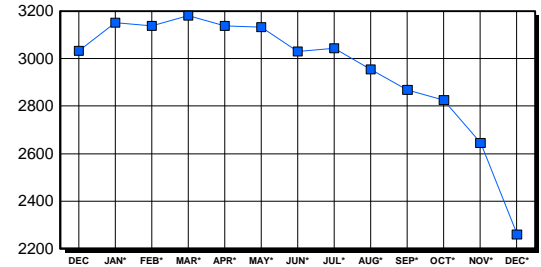
December 2000

#### LISTINGS

Price Range	New This Month			Total Active		
	2000	1999	% Change	2000	1999	% Change
0-149999	365	360	1.4	1,335	1,924	-30.6
150000-299999	224	195	14.9	781	955	-18.2
300000-449999	16	16	0.0	105	106	-0.9
450000-599999	1	3	-66.7	23	32	-28.1
600000-749999	0	0	0.0	5	4	0.0
750000-999999	0	0	0.0	8	6	0.0
1000000 & Over	0	0	0.0	4	6	0.0
<b>Grand Total:</b>	<b>606</b>	<b>574</b>	<b>5.6</b>	<b>2,261</b>	<b>3,033</b>	<b>-25.5</b>

#### INVENTORY TREND

Listings Active At End Of Month

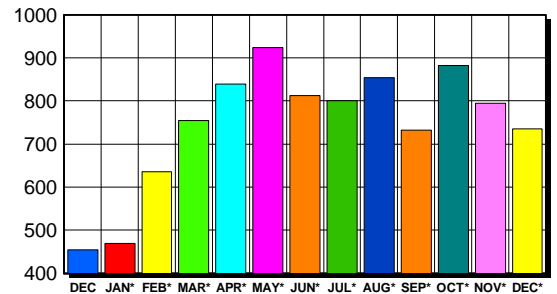


#### CONTRACTS

Price Range	New This Month			Year-To-Date		
	2000	1999	% Change	2000	1999	% Change
0-149999	502	330	52.1	5,826	5,277	10.4
150000-299999	228	140	62.9	3,228	2,634	22.6
300000-449999	6	10	-40.0	154	114	35.1
450000-599999	0	1	-100.0	25	18	38.9
600000-749999	0	0	0.0	1	1	0.0
750000-999999	0	0	0.0	2	0	200.0
1000000 & Over	0	0	0.0	3	1	200.0
<b>Grand Total:</b>	<b>736</b>	<b>481</b>	<b>53.0</b>	<b>9,239</b>	<b>8,045</b>	<b>14.8</b>

#### SALES TREND

Contracts Ratified Per Month



#### SETTLEMENTS

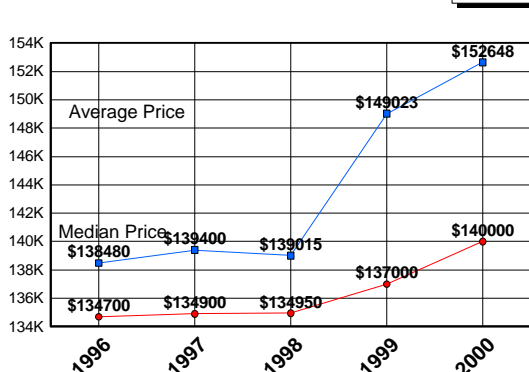
Price Range	New This Month			Year-To-Date		
	2000	1999	% Change	2000	1999	% Change
0-149999	363	371	-2.2	4,958	4,945	0.3
150000-299999	259	203	27.6	3,129	2,580	21.3
300000-449999	13	12	8.3	147	100	47.0
450000-599999	2	2	0.0	19	22	-13.6
600000-749999	1	0	100.0	1	1	0.0
750000-999999	1	0	100.0	4	0	400.0
1000000 & Over	1	0	100.0	11	1	1,000.0
<b>Grand Total:</b>	<b>640</b>	<b>588</b>	<b>8.8</b>	<b>8,269</b>	<b>7,649</b>	<b>8.1</b>

#### DATA SOURCE

Metropolitan Regional Information System (MRIS)

NOTES: Properties not listed through this Multiple Listing Service are not reflected. The term "sales" represents ratified purchase contracts. Current year information is preliminary and subject to revision. Current year- to- date contract information may not equal the sum of the monthly contract totals reported in previous issues. Prices are not adjusted for inflation.

#### AVERAGE & MEDIAN PRICE



#### MARKET BY PRICE RANGE

