

PRINCE GEORGES COUNTY HOUSING REPORT

Residential Market Report

Single Family Homes

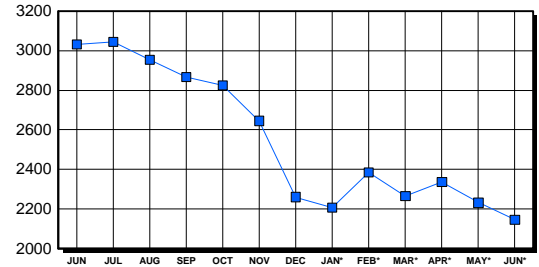
June 2001

LISTINGS

| Price Range | New This Month | | | Total Active | | |
|---------------------|----------------|--------------|--------------|--------------|--------------|--------------|
| | 2001 | 2000 | % Change | 2001 | 2000 | % Change |
| 0-149999 | 536 | 722 | -25.8 | 1,202 | 1,787 | -32.7 |
| 150000-299999 | 473 | 431 | 9.7 | 765 | 1,075 | -28.8 |
| 300000-449999 | 36 | 29 | 24.1 | 123 | 119 | 3.4 |
| 450000-599999 | 9 | 9 | 0.0 | 37 | 31 | 19.4 |
| 600000-749999 | 1 | 0 | 0.0 | 4 | 4 | 100.0 |
| 750000-999999 | 1 | 0 | 0.0 | 10 | 11 | 100.0 |
| 1000000 & Over | 1 | 1 | 0.0 | 6 | 3 | 100.0 |
| Grand Total: | 1,057 | 1,192 | -11.3 | 2,147 | 3,030 | -29.1 |

INVENTORY TREND

Listings Active At End Of Month

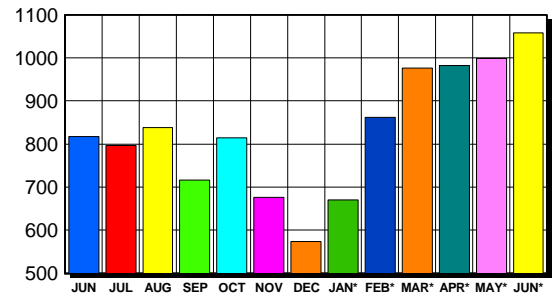


CONTRACTS

| Price Range | New This Month | | | Year-To-Date | | |
|---------------------|----------------|------------|-------------|--------------|--------------|-------------|
| | 2001 | 2000 | % Change | 2001 | 2000 | % Change |
| 0-149999 | 610 | 620 | -1.6 | 3,194 | 2,971 | 7.5 |
| 150000-299999 | 419 | 286 | 46.5 | 2,212 | 1,627 | 36.0 |
| 300000-449999 | 26 | 11 | 136.4 | 120 | 70 | 71.4 |
| 450000-599999 | 1 | 2 | -50.0 | 15 | 14 | 7.1 |
| 600000-749999 | 1 | 0 | 100.0 | 2 | 0 | 200.0 |
| 750000-999999 | 0 | 0 | 0.0 | 0 | 1 | 0.0 |
| 1000000 & Over | 1 | 1 | 0.0 | 3 | 2 | 50.0 |
| Grand Total: | 1,058 | 920 | 15.0 | 5,546 | 4,685 | 18.4 |

SALES TREND

Contracts Ratified Per Month



SETTLEMENTS

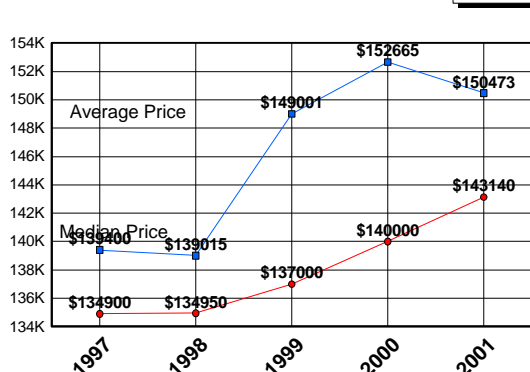
| Price Range | New This Month | | | Year-To-Date | | |
|---------------------|----------------|------------|-------------|--------------|--------------|-------------|
| | 2001 | 2000 | % Change | 2001 | 2000 | % Change |
| 0-149999 | 378 | 364 | 3.8 | 2,395 | 2,089 | 14.6 |
| 150000-299999 | 368 | 265 | 38.9 | 1,739 | 1,308 | 33.0 |
| 300000-449999 | 14 | 12 | 16.7 | 88 | 57 | 54.4 |
| 450000-599999 | 1 | 3 | -66.7 | 14 | 12 | 16.7 |
| 600000-749999 | 0 | 0 | 0.0 | 1 | 0 | 100.0 |
| 750000-999999 | 0 | 0 | 0.0 | 0 | 1 | 0.0 |
| 1000000 & Over | 0 | 0 | 0.0 | 0 | 1 | 0.0 |
| Grand Total: | 761 | 644 | 18.2 | 4,237 | 3,468 | 22.2 |

DATA SOURCE

Metropolitan Regional Information System (MRIS)

NOTES: Properties not listed through this Multiple Listing Service are not reflected. The term "sales" represents ratified purchase contracts. Current year information is preliminary and subject to revision. Current year- to- date contract information may not equal the sum of the monthly contract totals reported in previous issues. Prices are not adjusted for inflation.

AVERAGE & MEDIAN PRICE



MARKET BY PRICE RANGE

