

# PRINCE GEORGES COUNTY HOUSING REPORT

## Residential Market Report

### Single Family Homes

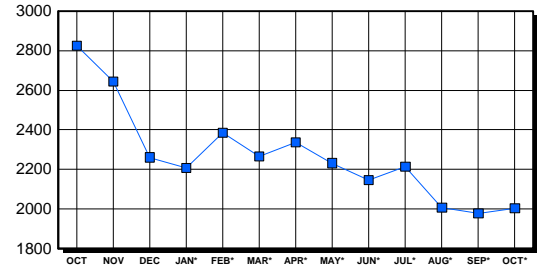
October 2001

#### LISTINGS

Price Range	New This Month			Total Active		
	2001	2000	% Change	2001	2000	% Change
0-149999	509	633	-19.6	1,097	1,725	-36.4
150000-299999	464	345	34.5	736	940	-21.7
300000-449999	33	25	32.0	126	116	8.6
450000-599999	5	2	150.0	27	25	8.0
600000-749999	3	0	0.0	7	6	100.0
750000-999999	1	2	-50.0	6	9	-33.3
1000000 & Over	1	1	0.0	5	4	25.0
<b>Grand Total:</b>	<b>1,016</b>	<b>1,008</b>	<b>0.8</b>	<b>2,004</b>	<b>2,825</b>	<b>-29.1</b>

#### INVENTORY TREND

Listings Active At End Of Month

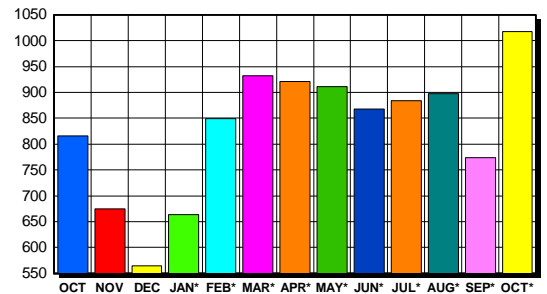


#### CONTRACTS

Price Range	New This Month			Year-To-Date		
	2001	2000	% Change	2001	2000	% Change
0-149999	564	694	-18.7	4,794	4,948	-3.1
150000-299999	426	269	58.4	3,696	2,764	33.7
300000-449999	24	16	50.0	190	126	50.8
450000-599999	4	3	33.3	32	24	33.3
600000-749999	0	0	0.0	3	0	300.0
750000-999999	0	1	-100.0	2	2	0.0
1000000 & Over	0	1	-100.0	1	3	-66.7
<b>Grand Total:</b>	<b>1,018</b>	<b>984</b>	<b>3.5</b>	<b>8,718</b>	<b>7,867</b>	<b>10.8</b>

#### SALES TREND

Contracts Ratified Per Month



#### SETTLEMENTS

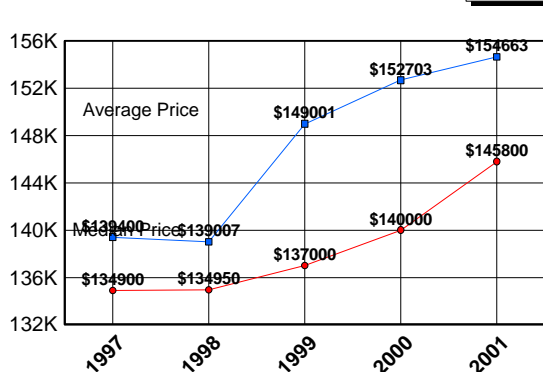
Price Range	New This Month			Year-To-Date		
	2001	2000	% Change	2001	2000	% Change
0-149999	294	408	-27.9	4,109	4,076	0.8
150000-299999	311	240	29.6	3,369	2,531	33.1
300000-449999	14	16	-12.5	162	108	50.0
450000-599999	2	2	0.0	26	20	30.0
600000-749999	0	0	0.0	2	0	200.0
750000-999999	0	0	0.0	0	1	0.0
1000000 & Over	0	0	0.0	2	2	0.0
<b>Grand Total:</b>	<b>621</b>	<b>666</b>	<b>-6.8</b>	<b>7,670</b>	<b>6,738</b>	<b>13.8</b>

#### DATA SOURCE

Metropolitan Regional Information System (MRIS)

NOTES: Properties not listed through this Multiple Listing Service are not reflected. The term "sales" represents ratified purchase contracts. Current year information is preliminary and subject to revision. Current year- to- date contract information may not equal the sum of the monthly contract totals reported in previous issues. Prices are not adjusted for inflation.

#### AVERAGE & MEDIAN PRICE



#### MARKET BY PRICE RANGE

