

# PRINCE GEORGES COUNTY HOUSING REPORT

## Residential Market Report

### Single Family Homes

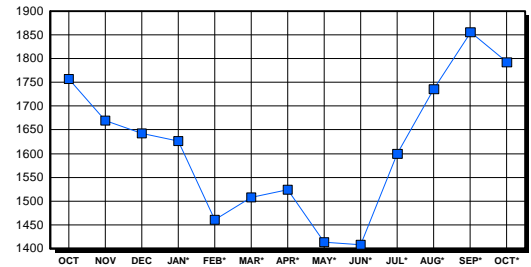
October 2003

#### LISTINGS

Price Range	New This Month			Total Active		
	2003	2002	% Change	2003	2002	% Change
0-149999	268	362	-26.0	551	681	-19.1
150000-299999	885	712	24.3	858	815	5.3
300000-449999	154	84	83.3	217	176	23.3
450000-599999	33	7	371.4	90	49	83.7
600000-749999	11	1	1,000.0	50	16	212.5
750000-999999	4	2	100.0	18	13	38.5
1000000 & Over	1	1	0.0	8	7	14.3
<b>Grand Total:</b>	<b>1,356</b>	<b>1,169</b>	<b>16.0</b>	<b>1,792</b>	<b>1,757</b>	<b>2.0</b>

#### INVENTORY TREND

Listings Active At End Of Month

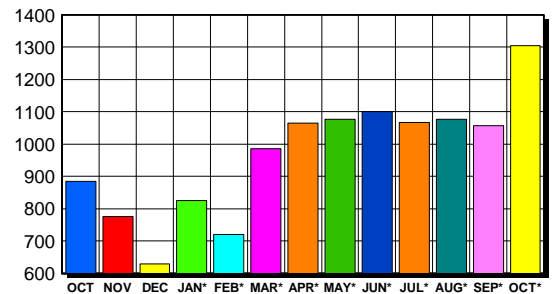


#### CONTRACTS

Price Range	New This Month			Year-To-Date		
	2003	2002	% Change	2003	2002	% Change
0-149999	282	354	-20.3	2,310	3,590	-35.7
150000-299999	878	634	38.5	6,853	5,152	33.0
300000-449999	115	46	150.0	938	411	128.2
450000-599999	24	7	242.9	139	44	215.9
600000-749999	3	1	200.0	18	6	200.0
750000-999999	2	1	100.0	11	6	83.3
1000000 & Over	0	0	0.0	5	0	500.0
<b>Grand Total:</b>	<b>1,304</b>	<b>1,043</b>	<b>25.0</b>	<b>10,274</b>	<b>9,209</b>	<b>11.6</b>

#### SALES TREND

Contracts Ratified Per Month



#### SETTLEMENTS

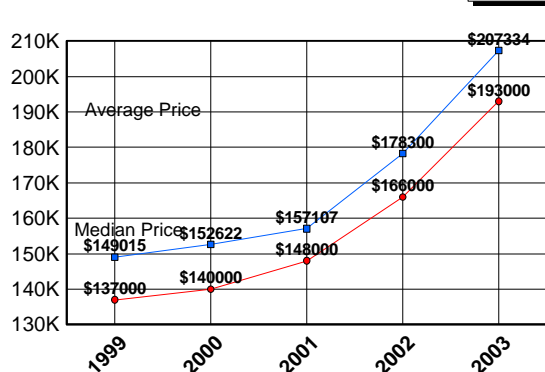
Price Range	New This Month			Year-To-Date		
	2003	2002	% Change	2003	2002	% Change
0-149999	170	226	-24.8	2,017	3,259	-38.1
150000-299999	702	491	43.0	6,319	4,643	36.1
300000-449999	111	53	109.4	862	361	138.8
450000-599999	15	4	275.0	106	35	202.9
600000-749999	1	1	0.0	18	4	350.0
750000-999999	2	0	200.0	8	5	60.0
1000000 & Over	0	0	0.0	4	0	400.0
<b>Grand Total:</b>	<b>1,001</b>	<b>775</b>	<b>29.2</b>	<b>9,334</b>	<b>8,307</b>	<b>12.4</b>

#### DATA SOURCE

Metropolitan Regional Information System (MRIS)

NOTES: Properties not listed through this Multiple Listing Service are not reflected. The term "sales" represents ratified purchase contracts. Current year information is preliminary and subject to revision. Current year- to- date contract information may not equal the sum of the monthly contract totals reported in previous issues. Prices are not adjusted for inflation.

#### AVERAGE & MEDIAN PRICE



#### MARKET BY PRICE RANGE

