

# PRINCE GEORGES COUNTY HOUSING REPORT

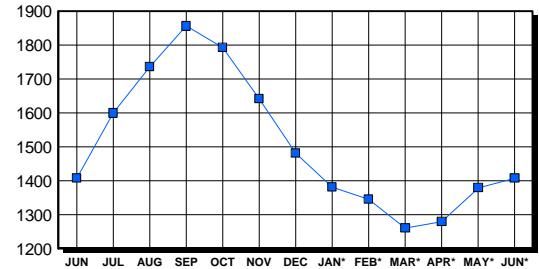
## Residential Market Report Single Family Homes June 2004

### LISTINGS

Price Range	New This Month			Total Active		
	2004	2003	% Change	2004	2003	% Change
0-149999	111	265	-58.1	316	459	-31.2
150000-299999	921	886	4.0	667	654	2.0
300000-449999	332	140	137.1	251	188	33.5
450000-599999	71	30	136.7	100	67	49.3
600000-749999	15	2	650.0	35	22	59.1
750000-999999	7	3	133.3	29	11	163.6
1000000 & Over	5	0	0.0	10	7	100.0
<b>Grand Total:</b>	<b>1,462</b>	<b>1,326</b>	<b>10.3</b>	<b>1,408</b>	<b>1,408</b>	<b>0.0</b>

### INVENTORY TREND

Listings Active At End Of Month

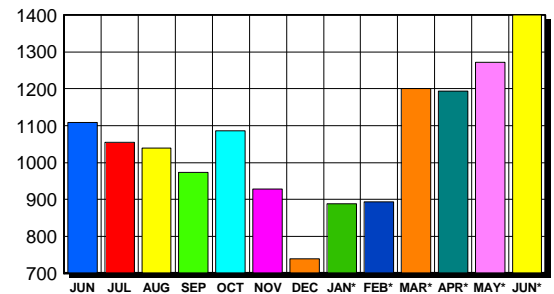


### CONTRACTS

Price Range	New This Month			Year-To-Date		
	2004	2003	% Change	2004	2003	% Change
0-149999	148	315	-53.0	938	1,616	-42.0
150000-299999	929	873	6.4	4,593	4,003	14.7
300000-449999	265	123	115.4	1,069	501	113.4
450000-599999	43	21	104.8	189	80	136.3
600000-749999	9	1	800.0	35	10	250.0
750000-999999	1	0	100.0	15	4	275.0
1000000 & Over	4	1	300.0	8	4	100.0
<b>Grand Total:</b>	<b>1,399</b>	<b>1,334</b>	<b>4.9</b>	<b>6,847</b>	<b>6,218</b>	<b>10.1</b>

### SALES TREND

Contracts Ratified Per Month



### SETTLEMENTS

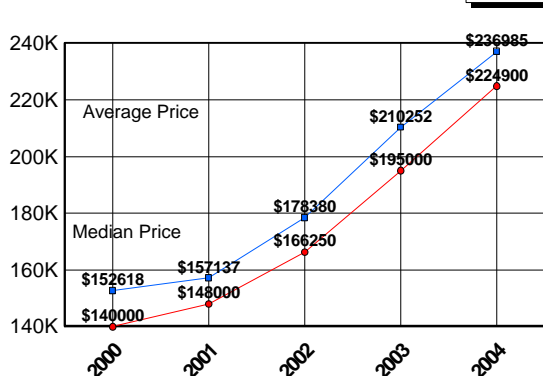
Price Range	New This Month			Year-To-Date		
	2004	2003	% Change	2004	2003	% Change
0-149999	94	173	-45.7	802	1,256	-36.1
150000-299999	688	649	6.0	3,937	3,219	22.3
300000-449999	212	93	128.0	869	372	133.6
450000-599999	45	11	309.1	155	37	318.9
600000-749999	7	1	600.0	24	5	380.0
750000-999999	0	0	0.0	11	4	175.0
1000000 & Over	1	0	100.0	4	1	300.0
<b>Grand Total:</b>	<b>1,047</b>	<b>927</b>	<b>12.9</b>	<b>5,802</b>	<b>4,894</b>	<b>18.6</b>

### DATA SOURCE

Metropolitan Regional Information System (MRIS)

NOTES: Properties not listed through this Multiple Listing Service are not reflected. The term "sales" represents ratified purchase contracts. Current year information is preliminary and subject to revision. Current year- to- date contract information may not equal the sum of the monthly contract totals reported in previous issues. Prices are not adjusted for inflation.

### AVERAGE & MEDIAN PRICE



### MARKET BY PRICE RANGE

