

# PRINCE GEORGES COUNTY HOUSING REPORT

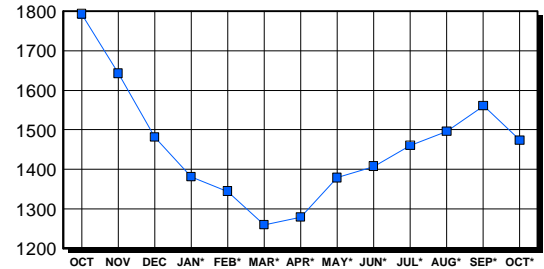
## Residential Market Report Single Family Homes October 2004

### LISTINGS

Price Range	New This Month			Total Active		
	2004	2003	% Change	2004	2003	% Change
0-149999	93	275	-66.2	291	551	-47.2
150000-299999	774	904	-14.4	668	858	-22.1
300000-449999	341	143	138.5	316	217	45.6
450000-599999	83	33	151.5	111	90	23.3
600000-749999	21	12	75.0	43	50	-14.0
750000-999999	6	4	50.0	32	18	77.8
1000000 & Over	2	1	100.0	13	8	62.5
<b>Grand Total:</b>	<b>1,320</b>	<b>1,372</b>	<b>-3.8</b>	<b>1,474</b>	<b>1,792</b>	<b>-17.7</b>

### INVENTORY TREND

Listings Active At End Of Month

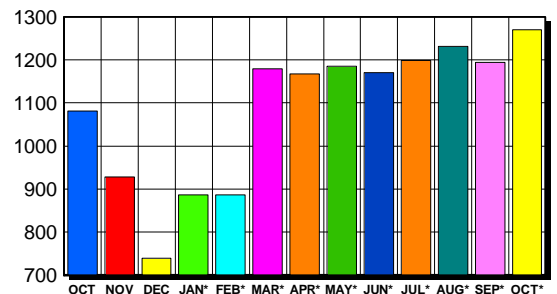


### CONTRACTS

Price Range	New This Month			Year-To-Date		
	2004	2003	% Change	2004	2003	% Change
0-149999	106	282	-62.4	1,267	2,310	-45.2
150000-299999	813	878	-7.4	7,531	6,853	9.9
300000-449999	283	115	146.1	2,072	938	120.9
450000-599999	56	24	133.3	404	139	190.6
600000-749999	6	3	100.0	52	18	188.9
750000-999999	5	2	150.0	29	11	163.6
1000000 & Over	1	0	100.0	11	5	120.0
<b>Grand Total:</b>	<b>1,270</b>	<b>1,304</b>	<b>-2.6</b>	<b>11,366</b>	<b>10,274</b>	<b>10.6</b>

### SALES TREND

Contracts Ratified Per Month



### SETTLEMENTS

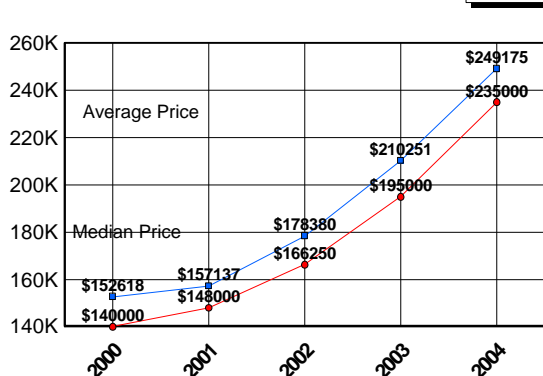
Price Range	New This Month			Year-To-Date		
	2004	2003	% Change	2004	2003	% Change
0-149999	80	170	-52.9	1,209	2,017	-40.1
150000-299999	640	698	-8.3	7,080	6,239	13.5
300000-449999	224	105	113.3	1,935	815	137.4
450000-599999	50	15	233.3	346	113	206.2
600000-749999	6	1	500.0	45	16	181.3
750000-999999	3	2	50.0	23	9	155.6
1000000 & Over	0	0	0.0	9	4	125.0
<b>Grand Total:</b>	<b>1,003</b>	<b>991</b>	<b>1.2</b>	<b>10,647</b>	<b>9,213</b>	<b>15.6</b>

### DATA SOURCE

Metropolitan Regional Information System (MRIS)

NOTES: Properties not listed through this Multiple Listing Service are not reflected. The term "sales" represents ratified purchase contracts. Current year information is preliminary and subject to revision. Current year-to-date contract information may not equal the sum of the monthly contract totals reported in previous issues. Prices are not adjusted for inflation.

### AVERAGE & MEDIAN PRICE



### MARKET BY PRICE RANGE

