

PRINCE GEORGES COUNTY HOUSING REPORT

Residential Market Report

Condo/Co-ops

June

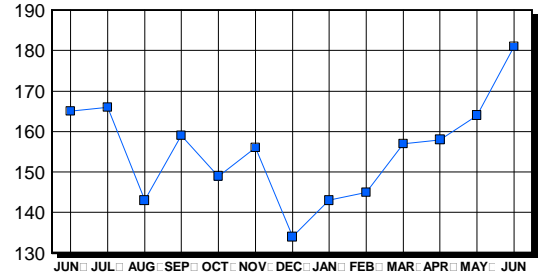
2005

LISTINGS

Price Range	New This Month			Total Active		
	2005	2004	% Change	2005	2004	% Change
0-49999	4	6	-33.3	19	20	-5.0
50000-99999	18	58	-69.0	58	77	-24.7
100000-149999	52	90	-42.2	36	39	-7.7
150000-199999	83	42	97.6	31	12	158.3
200000-299999	84	16	425.0	34	15	126.7
300000-399999	3	0	300.0	2	1	100.0
400000-499999	1	0	100.0	0	0	0.0
500000 & Over	0	0	0.0	1	1	0.0
Grand Total:	245	212	15.6	181	165	9.7

INVENTORY TREND

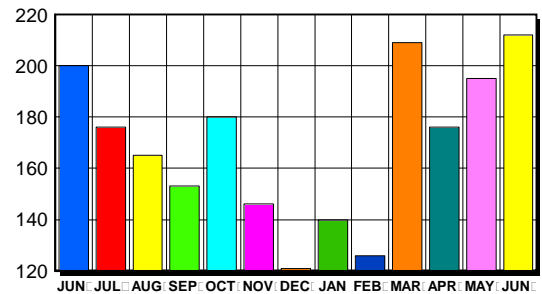
Listings Active At End Of Month



CONTRACTS

Price Range	New This Month			Year-To-Date		
	2005	2004	% Change	2005	2004	% Change
0-49999	2	6	-66.7	12	38	-68.4
50000-99999	18	69	-73.9	121	338	-64.2
100000-149999	49	91	-46.2	345	412	-16.3
150000-199999	69	48	43.8	318	184	72.8
200000-299999	70	14	400.0	253	45	462.2
300000-399999	3	0	300.0	5	0	500.0
400000-499999	1	0	100.0	4	0	400.0
500000 & Over	0	0	0.0	0	0	0.0
Grand Total:	228	228	-7.0	1,058	1,017	4.0

SALES TREND



SETTLEMENTS

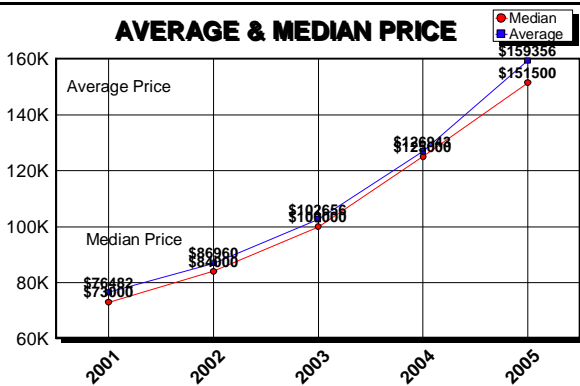
Price Range	New This Month			Year-To-Date		
	2005	2004	% Change	2005	2004	% Change
0-49999	0	7	-700.0	10	33	-69.7
50000-99999	15	39	-61.5	116	289	-59.9
100000-149999	33	58	-43.1	317	348	-8.9
150000-199999	53	42	26.2	266	160	66.3
200000-299999	52	20	160.0	217	42	416.7
300000-399999	1	0	100.0	4	0	400.0
400000-499999	1	0	100.0	2	0	200.0
500000 & Over	0	0	0.0	0	0	0.0
Grand Total:	155	166	-6.6	932	872	6.9

DATA SOURCE

Metropolitan Regional Information System (MRIS)

NOTES: Properties not listed through this Multiple Listing Service are not reflected. The term "sales" represents ratified purchase contracts. Current year information is preliminary and subject to revision. Current year-to-date contract information may not equal the sum of the monthly contract totals reported in previous issues. Prices are not adjusted for inflation.

AVERAGE & MEDIAN PRICE



MARKET BY PRICE RANGE

