

PRINCE GEORGES COUNTY HOUSING REPORT

Residential Market Report

Condo/Co-ops

July

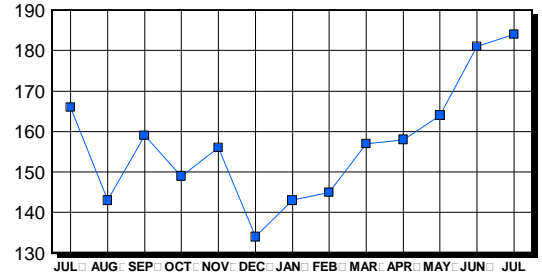
2005

LISTINGS

Price Range	New This Month			Total Active		
	2005	2004	% Change	2005	2004	% Change
0-49999	3	3	0.0	18	19	-5.3
50000-99999	11	76	-85.5	61	79	-22.8
100000-149999	55	73	-24.7	32	34	-5.9
150000-199999	75	46	63.0	30	15	100.0
200000-299999	80	18	344.4	39	17	129.4
300000-399999	4	0	400.0	1	1	0.0
400000-499999	0	0	0.0	0	0	0.0
500000 & Over	2	0	200.0	3	1	200.0
Grand Total:	230	216	6.5	184	166	10.8

INVENTORY TREND

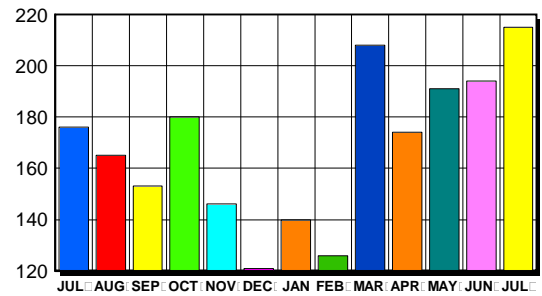
Listings Active At End Of Month



CONTRACTS

Price Range	New This Month			Year-To-Date		
	2005	2004	% Change	2005	2004	% Change
0-49999	2	4	-50.0	14	42	-66.7
50000-99999	12	66	-81.8	130	392	-66.8
100000-149999	51	80	-36.3	391	479	-18.4
150000-199999	62	38	63.2	376	216	74.1
200000-299999	83	10	730.0	324	56	478.6
300000-399999	4	0	400.0	8	0	800.0
400000-499999	0	0	0.0	4	0	400.0
500000 & Over	1	0	100.0	1	0	100.0
Grand Total:	198	216	8.6	1,248	1,185	5.3

SALES TREND



SETTLEMENTS

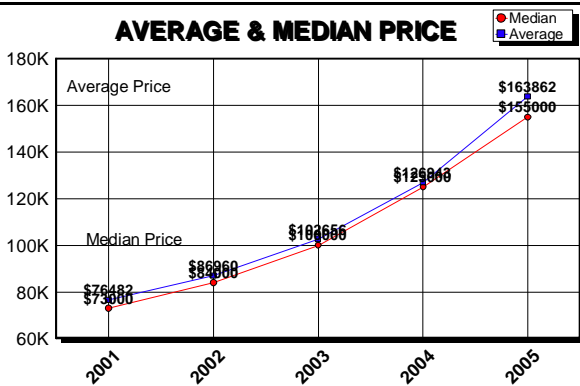
Price Range	New This Month			Year-To-Date		
	2005	2004	% Change	2005	2004	% Change
0-49999	1	4	-75.0	11	37	-70.3
50000-99999	10	45	-77.8	129	343	-62.4
100000-149999	34	61	-44.3	357	421	-15.2
150000-199999	60	32	87.5	328	199	64.8
200000-299999	58	12	383.3	286	54	429.6
300000-399999	1	0	100.0	5	0	500.0
400000-499999	2	0	200.0	4	0	400.0
500000 & Over	0	0	0.0	0	0	0.0
Grand Total:	166	154	7.8	1,120	1,054	6.3

DATA SOURCE

Metropolitan Regional Information System (MRIS)

NOTES: Properties not listed through this Multiple Listing Service are not reflected. The term "sales" represents ratified purchase contracts. Current year information is preliminary and subject to revision. Current year-to-date contract information may not equal the sum of the monthly contract totals reported in previous issues. Prices are not adjusted for inflation.

AVERAGE & MEDIAN PRICE



MARKET BY PRICE RANGE

