

# PRINCE GEORGES COUNTY HOUSING REPORT

## Residential Market Report

### Condo/Co-ops

October

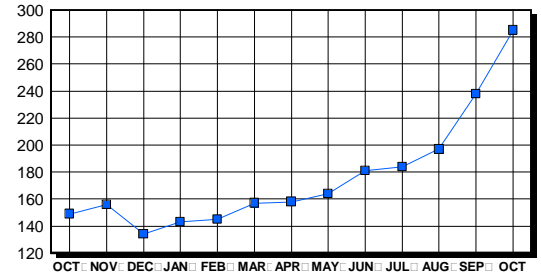
2005

### LISTINGS

Condo/Co-ops Price Range	New This Month			Total Active		
	2005	2004	% Change	2005	2004	% Change
0-49999	2	2	0.0	19	17	11.8
50000-99999	11	36	-69.4	56	67	-16.4
100000-149999	53	65	-18.5	45	30	50.0
150000-199999	90	65	38.5	63	19	231.6
200000-299999	103	18	472.2	93	15	520.0
300000-399999	7	2	250.0	5	0	500.0
400000-499999	5	0	500.0	2	0	200.0
500000 & Over	0	0	0.0	2	1	100.0
<b>Grand Total:</b>	<b>271</b>	<b>188</b>	<b>44.1</b>	<b>285</b>	<b>149</b>	<b>91.3</b>

### INVENTORY TREND

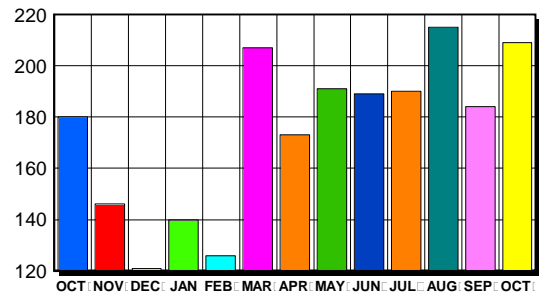
Listings Active At End Of Month



### CONTRACTS

Condo/Co-ops Price Range	New This Month			Year-To-Date		
	2005	2004	% Change	2005	2004	% Change
0-49999	2	4	-50.0	16	47	-66.0
50000-99999	13	63	-79.4	170	528	-67.8
100000-149999	46	64	-28.1	510	648	-21.3
150000-199999	67	61	9.8	565	344	64.2
200000-299999	71	15	373.3	531	102	420.6
300000-399999	8	0	800.0	23	0	2,300.0
400000-499999	1	0	100.0	5	1	400.0
500000 & Over	1	0	100.0	4	0	400.0
<b>Grand Total:</b>	<b>209</b>	<b>207</b>	<b>1.0</b>	<b>1,824</b>	<b>1,670</b>	<b>9.2</b>

### SALES TREND



### SETTLEMENTS

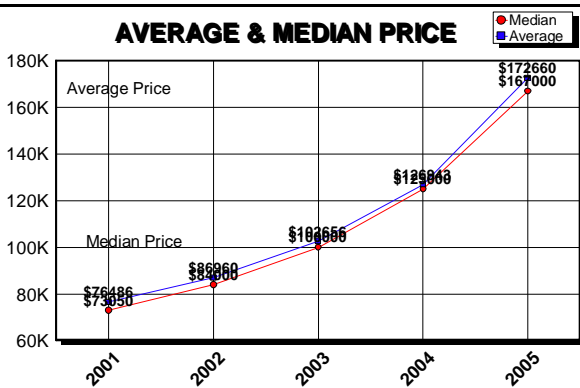
Condo/Co-ops Price Range	New This Month			Year-To-Date		
	2005	2004	% Change	2005	2004	% Change
0-49999	1	2	-50.0	14	43	-67.4
50000-99999	8	37	-78.4	162	480	-66.3
100000-149999	27	46	-41.3	478	614	-22.1
150000-199999	59	36	63.9	510	319	59.9
200000-299999	75	18	316.7	513	107	379.4
300000-399999	5	0	500.0	19	0	1,900.0
400000-499999	0	1	-100.0	4	1	300.0
500000 & Over	0	0	0.0	3	0	300.0
<b>Grand Total:</b>	<b>175</b>	<b>140</b>	<b>25.0</b>	<b>1,703</b>	<b>1,564</b>	<b>8.9</b>

### DATA SOURCE

Metropolitan Regional Information System (MRIS)

NOTES: Properties not listed through this Multiple Listing Service are not reflected. The term "sales" represents ratified purchase contracts. Current year information is preliminary and subject to revision. Current year-to-date contract information may not equal the sum of the monthly contract totals reported in previous issues. Prices are not adjusted for inflation.

### AVERAGE & MEDIAN PRICE



### MARKET BY PRICE RANGE

