

PRINCE GEORGES COUNTY HOUSING REPORT

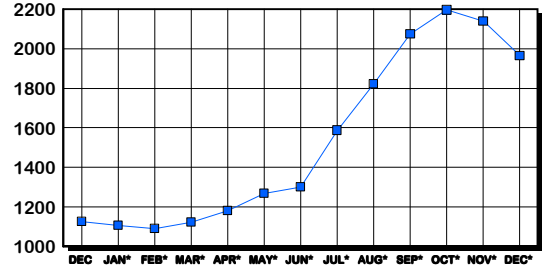
Residential Market Report Single Family Homes December 2005

LISTINGS

Price Range	New This Month			Total Active		
	2005	2004	% Change	2005	2004	% Change
0-149999	13	51	-74.5	232	270	-14.1
150000-299999	279	461	-39.5	459	460	-0.2
300000-449999	421	194	117.0	758	219	246.1
450000-599999	96	62	54.8	285	100	185.0
600000-749999	42	13	223.1	127	33	284.8
750000-999999	18	10	80.0	69	21	228.6
1000000 & Over	7	3	133.3	33	24	37.5
Grand Total:	876	794	10.3	1,963	1,127	74.2

INVENTORY TREND

Listings Active At End Of Month

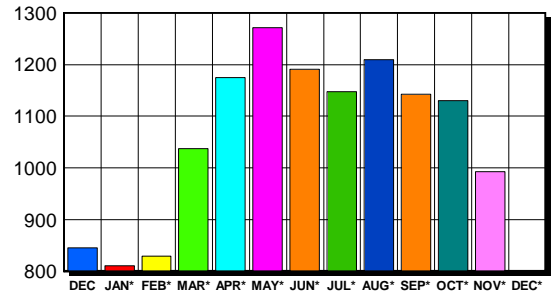


CONTRACTS

Price Range	New This Month			Year-To-Date		
	2005	2004	% Change	2005	2004	% Change
0-149999	7	83	-91.6	300	1,395	-78.5
150000-299999	300	558	-46.2	5,399	8,632	-37.5
300000-449999	369	241	53.1	5,437	2,537	114.3
450000-599999	91	57	59.6	1,219	507	140.4
600000-749999	24	14	71.4	285	78	265.4
750000-999999	7	4	75.0	75	36	108.3
1000000 & Over	2	4	-50.0	20	16	25.0
Grand Total:	800	961	-16.8	12,735	13,201	-3.5

SALES TREND

Contracts Ratified Per Month



SETTLEMENTS

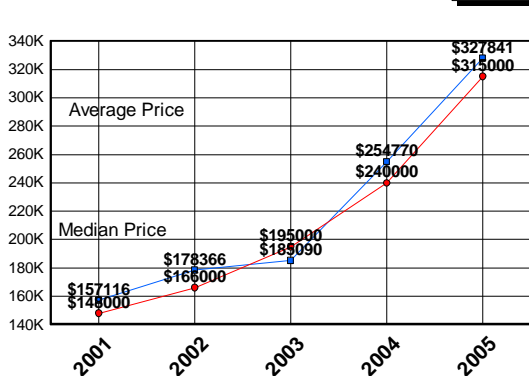
Price Range	New This Month			Year-To-Date		
	2005	2004	% Change	2005	2004	% Change
0-149999	12	65	-81.5	329	1,361	-75.8
150000-299999	312	614	-49.2	5,156	8,536	-39.6
300000-449999	495	242	104.5	5,582	2,370	135.5
450000-599999	129	48	168.8	1,217	464	162.3
600000-749999	34	12	183.3	280	68	311.8
750000-999999	8	3	166.7	67	27	148.1
1000000 & Over	1	1	0.0	18	11	63.6
Grand Total:	991	985	0.6	12,649	12,837	-1.5

DATA SOURCE

Metropolitan Regional Information System (MRIS)

NOTES: Properties not listed through this Multiple Listing Service are not reflected. The term "sales" represents ratified purchase contracts. Current year information is preliminary and subject to revision. Current year-to-date contract information may not equal the sum of the monthly contract totals reported in previous issues. Prices are not adjusted for inflation.

AVERAGE & MEDIAN PRICE



MARKET BY PRICE RANGE

