

# PRINCE GEORGES COUNTY

## Residential Market Report

# HOUSING REPORT

## Single Family Homes

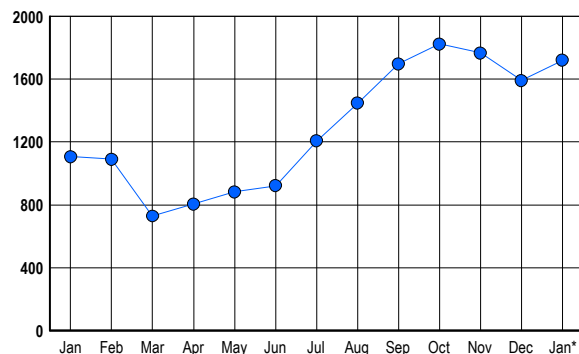
### January 2006

### LISTINGS

Prices Range	New This Month			Total Actives		
	2006	2005	% Change	2006	2005	% Change
0 - 149,999	21	56	-62.5	27	272	-90.1
150,000 - 199,999	64	148	-56.8	48	159	-69.8
200,000 - 299,999	308	396	-22.2	295	252	17.1
300,000 - 399,999	496	207	139.6	640	180	255.6
400,000 - 499,999	165	84	96.4	265	92	188.0
500,000 - 599,999	85	36	136.1	183	58	215.5
600,000 - 699,999	48	22	118.2	120	32	275.0
700,000 - 799,999	31	7	342.9	67	18	272.2
800,000 - 899,999	8	1	700.0	23	11	109.1
900,000 - 999,999	4	2	100.0	12	5	140.0
1,000,000 - 1,249,999	7	2	250.0	14	5	180.0
1,250,000 - 1,499,999	3	1	200.0	6	12	-50.0
1,500,000 +	9	2	350.0	19	11	72.7
<b>TOTALS</b>	<b>1249</b>	<b>964</b>	<b>29.6</b>	<b>1719</b>	<b>1107</b>	<b>55.3</b>

### INVENTORY TREND

Listings Active at End of Month

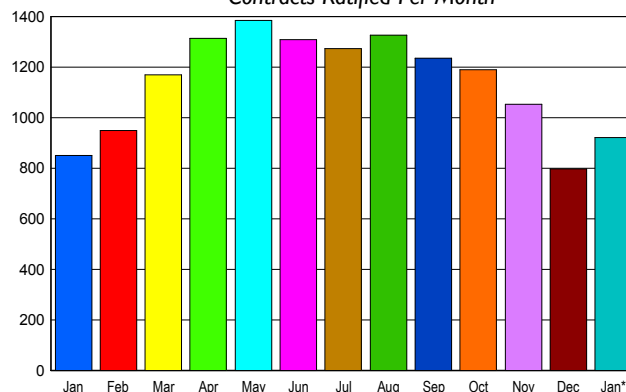


### CONTRACTS

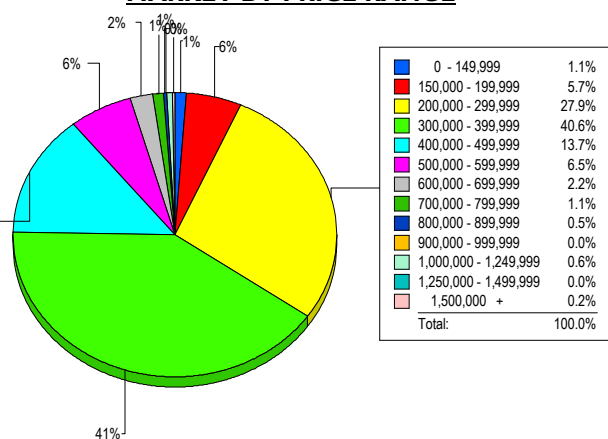
Price Range	New This Month			Year-To-Date		
	2006	2005	% Change	2006	2005	% Change
0 - 149,999	8	54	-85.2	8	54	-85.2
150,000 - 199,999	63	133	-52.6	63	133	-52.6
200,000 - 299,999	263	379	-30.6	263	379	-30.6
300,000 - 399,999	385	191	101.6	385	191	101.6
400,000 - 499,999	103	54	90.7	103	54	90.7
500,000 - 599,999	56	21	166.7	56	21	166.7
600,000 - 699,999	26	14	85.7	26	14	85.7
700,000 - 799,999	8	4	100.0	8	4	100.0
800,000 - 899,999	3	1	200.0	3	1	200.0
900,000 - 999,999	1	0	100.0	1	0	100.0
1,000,000 - 1,249,999	4	0	400.0	4	0	400.0
1,250,000 - 1,499,999	1	0	100.0	1	0	100.0
1,500,000 +	0	0	0.0	0	0	0.0
<b>TOTALS</b>	<b>921</b>	<b>851</b>	<b>8.2</b>	<b>921</b>	<b>851</b>	<b>8.2</b>

### SALES TREND

Contracts Ratified Per Month



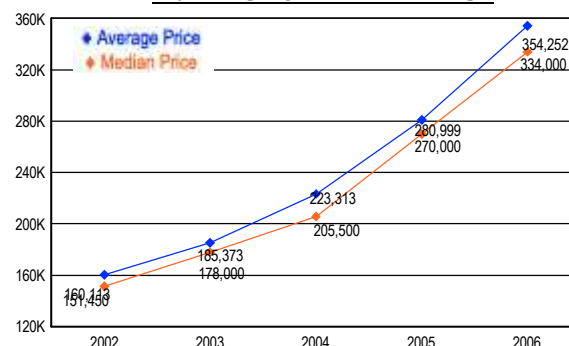
### MARKET BY PRICE RANGE



### SETTLEMENTS

Price Range	New This Month			Year-to-Date		
	2006	2005	% Change	2006	2005	% Change
0 - 149,999	7	55	-87.3	7	55	-87.3
150,000 - 199,999	37	103	-64.1	37	103	-64.1
200,000 - 299,999	181	342	-47.1	181	342	-47.1
300,000 - 399,999	263	174	51.1	263	174	51.1
400,000 - 499,999	89	53	67.9	89	53	67.9
500,000 - 599,999	42	22	90.9	42	22	90.9
600,000 - 699,999	14	8	75.0	14	8	75.0
700,000 - 799,999	7	4	75.0	7	4	75.0
800,000 - 899,999	3	0	300.0	3	0	300.0
900,000 - 999,999	0	0	0.0	0	0	0.0
1,000,000 - 1,249,999	4	0	400.0	4	0	400.0
1,250,000 - 1,499,999	0	0	0.0	0	0	0.0
1,500,000 +	1	0	100.0	1	0	100.0
<b>TOTALS</b>	<b>648</b>	<b>761</b>	<b>-14.8</b>	<b>648</b>	<b>761</b>	<b>-14.8</b>

### AVERAGE & MEDIAN PRICE



DATA SOURCE: Metropolitan Regional Information Systems, Inc. (MRIS)

NOTES: Properties not listed through this Multiple Listing Service are not reflected. The term "sales" represents ratified purchase contracts. Current year information is preliminary and subject to revision. Current year-to-date contract information may not equal the sum of the monthly contract totals reported in