

# PRINCE GEORGES COUNTY

## Residential Market Report

# HOUSING REPORT

## Single Family Homes

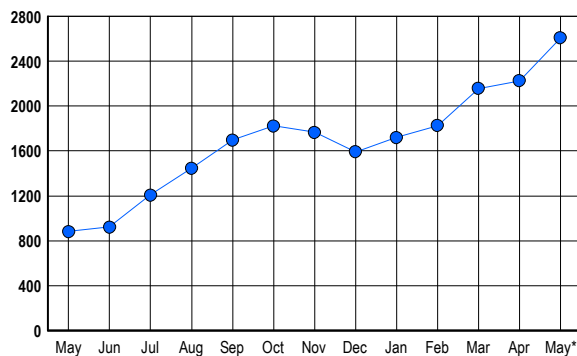
### May 2006

### LISTINGS

Prices Range	New This Month			Total Actives		
	2006	2005	% Change	2006	2005	% Change
0 - 149,999	4	36	-88.9	5	23	-78.3
150,000 - 199,999	29	123	-76.4	22	53	-58.5
200,000 - 299,999	310	516	-39.9	276	209	32.1
300,000 - 399,999	774	504	53.6	994	267	272.3
400,000 - 499,999	299	163	83.4	504	127	296.9
500,000 - 599,999	157	90	74.4	347	76	356.6
600,000 - 699,999	104	36	188.9	236	48	391.7
700,000 - 799,999	30	15	100.0	109	33	230.3
800,000 - 899,999	17	5	240.0	46	12	283.3
900,000 - 999,999	5	2	150.0	15	4	275.0
1,000,000 - 1,249,999	3	1	200.0	20	5	300.0
1,250,000 - 1,499,999	4	1	300.0	7	2	250.0
1,500,000 +	9	3	200.0	25	23	8.7
<b>TOTALS</b>	<b>1745</b>	<b>1495</b>	<b>16.7</b>	<b>2606</b>	<b>882</b>	<b>195.5</b>

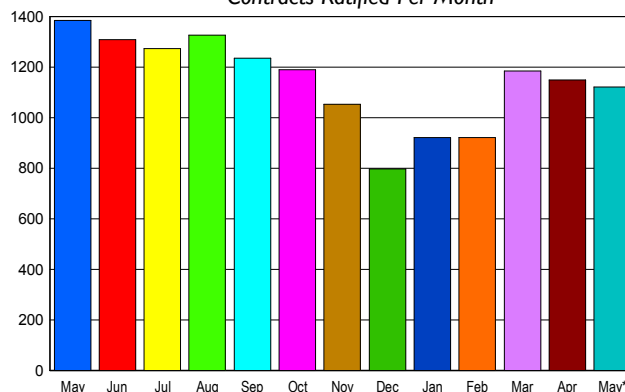
### INVENTORY TREND

Listings Active at End of Month



### SALES TREND

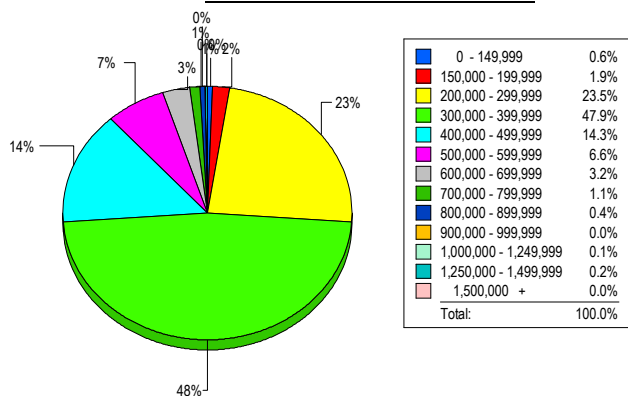
Contracts Ratified Per Month



### CONTRACTS

Price Range	New This Month			Year-To-Date		
	2006	2005	% Change	2006	2005	% Change
0 - 149,999	10	29	-65.5	41	209	-80.4
150,000 - 199,999	27	120	-77.5	176	594	-70.4
200,000 - 299,999	291	475	-38.7	1,312	2,090	-37.2
300,000 - 399,999	503	504	-0.2	2,193	1,596	37.4
400,000 - 499,999	164	130	26.2	692	441	56.9
500,000 - 599,999	69	87	-20.7	313	250	25.2
600,000 - 699,999	38	30	26.7	152	85	78.8
700,000 - 799,999	12	5	140.0	50	23	117.4
800,000 - 899,999	2	4	-50.0	17	9	88.9
900,000 - 999,999	1	0	100.0	8	3	166.7
1,000,000 - 1,249,999	4	0	400.0	8	1	700.0
1,250,000 - 1,499,999	2	0	200.0	7	2	250.0
1,500,000 +	0	2	-100.0	4	5	-20.0
<b>TOTALS</b>	<b>1123</b>	<b>1386</b>	<b>-19.0</b>	<b>4973</b>	<b>5308</b>	<b>-6.3</b>

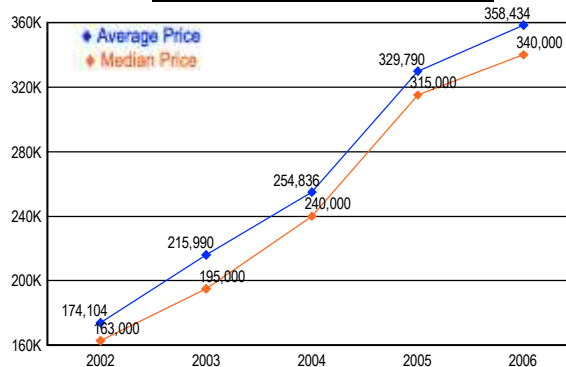
### MARKET BY PRICE RANGE



### SETTLEMENTS

Price Range	New This Month			Year-to-Date		
	2006	2005	% Change	2006	2005	% Change
0 - 149,999	6	20	-70.0	32	216	-85.2
150,000 - 199,999	18	93	-80.6	170	495	-65.7
200,000 - 299,999	217	375	-42.1	1,133	1,838	-38.4
300,000 - 399,999	443	369	20.1	1,963	1,328	47.8
400,000 - 499,999	132	81	63.0	630	380	65.8
500,000 - 599,999	61	51	19.6	269	175	53.7
600,000 - 699,999	30	19	57.9	127	52	144.2
700,000 - 799,999	10	5	100.0	47	23	104.3
800,000 - 899,999	4	1	300.0	16	3	433.3
900,000 - 999,999	0	0	0.0	5	1	400.0
1,000,000 - 1,249,999	1	0	100.0	8	3	166.7
1,250,000 - 1,499,999	2	0	200.0	4	0	400.0
1,500,000 +	0	0	0.0	2	1	100.0
<b>TOTALS</b>	<b>924</b>	<b>1014</b>	<b>-8.9</b>	<b>4406</b>	<b>4515</b>	<b>-2.4</b>

### AVERAGE & MEDIAN PRICE



DATA SOURCE: Metropolitan Regional Information Systems, Inc. (MRIS)

NOTES: Properties not listed through this Multiple Listing Service are not reflected. The term "sales" represents ratified purchase contracts. Current year information is preliminary and subject to revision. Current year-to-date contract information may not equal the sum of the monthly contract totals reported in