

PRINCE GEORGES COUNTY

Residential Market Report

HOUSING REPORT

Single Family Homes

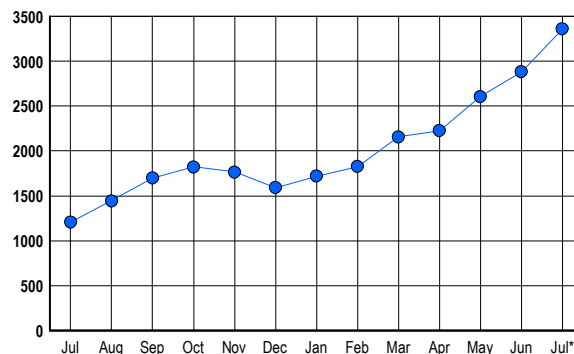
July 2006

LISTINGS

Prices Range	New This Month			Total Actives		
	2006	2005	% Change	2006	2005	% Change
0 - 149,999	7	25	-72.0	5	19	-73.7
150,000 - 199,999	29	80	-63.8	30	42	-28.6
200,000 - 299,999	314	439	-28.5	386	222	73.9
300,000 - 399,999	724	644	12.4	1,284	417	207.9
400,000 - 499,999	319	200	59.5	641	197	225.4
500,000 - 599,999	162	120	35.0	487	127	283.5
600,000 - 699,999	89	53	67.9	279	78	257.7
700,000 - 799,999	44	20	120.0	132	48	175.0
800,000 - 899,999	12	8	50.0	47	18	161.1
900,000 - 999,999	5	2	150.0	26	4	550.0
1,000,000 - 1,249,999	3	5	-40.0	17	8	112.5
1,250,000 - 1,499,999	2	0	200.0	9	2	350.0
1,500,000 +	0	4	-100.0	16	25	-36.0
TOTALS	1710	1600	6.9	3359	1207	178.3

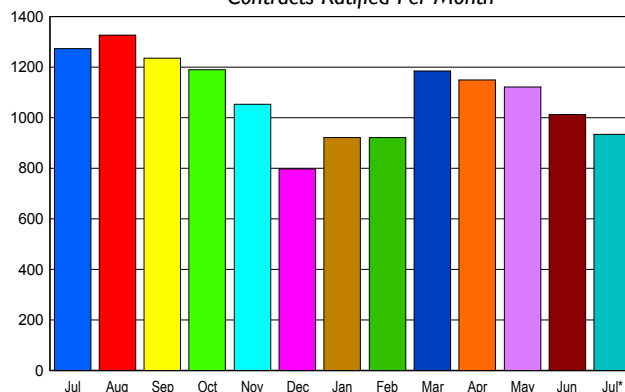
INVENTORY TREND

Listings Active at End of Month



SALES TREND

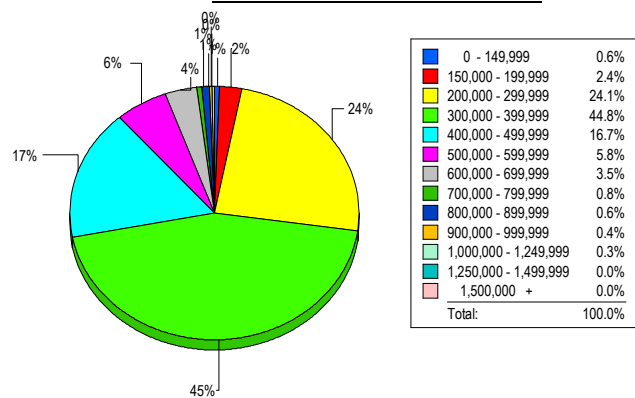
Contracts Ratified Per Month



CONTRACTS

Price Range	New This Month			Year-To-Date		
	2006	2005	% Change	2006	2005	% Change
0 - 149,999	5	25	-80.0	53	244	-78.3
150,000 - 199,999	18	90	-80.0	221	763	-71.0
200,000 - 299,999	245	400	-38.8	1,748	2,838	-38.4
300,000 - 399,999	431	492	-12.4	3,001	2,499	20.1
400,000 - 499,999	145	146	-0.7	956	707	35.2
500,000 - 599,999	49	83	-41.0	424	394	7.6
600,000 - 699,999	27	27	0.0	210	126	66.7
700,000 - 799,999	11	7	57.1	68	36	88.9
800,000 - 899,999	2	1	100.0	22	11	100.0
900,000 - 999,999	2	1	100.0	11	4	175.0
1,000,000 - 1,249,999	0	2	-100.0	8	3	166.7
1,250,000 - 1,499,999	0	0	0.0	8	2	300.0
1,500,000 +	1	1	0.0	5	7	-28.6
TOTALS	936	1275	-26.6	6735	7634	-11.8

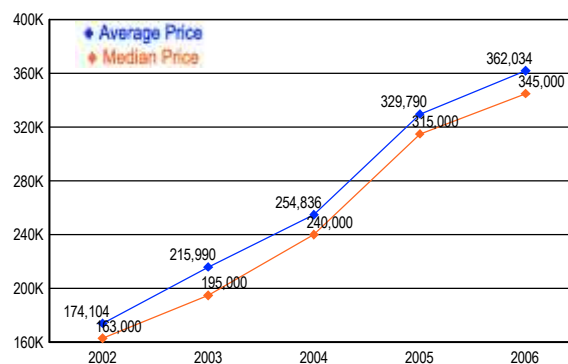
MARKET BY PRICE RANGE



SETTLEMENTS

Price Range	New This Month			Year-to-Date		
	2006	2005	% Change	2006	2005	% Change
0 - 149,999	5	14	-64.3	44	258	-82.9
150,000 - 199,999	19	57	-66.7	219	661	-66.9
200,000 - 299,999	191	295	-35.3	1,601	2,598	-38.4
300,000 - 399,999	355	421	-15.7	2,858	2,302	24.2
400,000 - 499,999	132	120	10.0	953	642	48.4
500,000 - 599,999	46	72	-36.1	410	340	20.6
600,000 - 699,999	28	17	64.7	195	95	105.3
700,000 - 799,999	6	4	50.0	64	32	100.0
800,000 - 899,999	5	3	66.7	26	9	188.9
900,000 - 999,999	3	0	300.0	8	2	300.0
1,000,000 - 1,249,999	2	0	200.0	12	3	300.0
1,250,000 - 1,499,999	0	0	0.0	4	0	400.0
1,500,000 +	0	2	-100.0	2	4	-50.0
TOTALS	792	1005	-21.2	6396	6946	-7.9

AVERAGE & MEDIAN PRICE



DATA SOURCE: Metropolitan Regional Information Systems, Inc. (MRIS)

NOTES: Properties not listed through this Multiple Listing Service are not reflected. The term "sales" represents ratified purchase contracts. Current year information is preliminary and subject to revision. Current year-to-date contract information may not equal the sum of the monthly contract totals reported in