

# PRINCE GEORGES COUNTY

## Residential Market Report

# HOUSING REPORT

## Single Family Homes

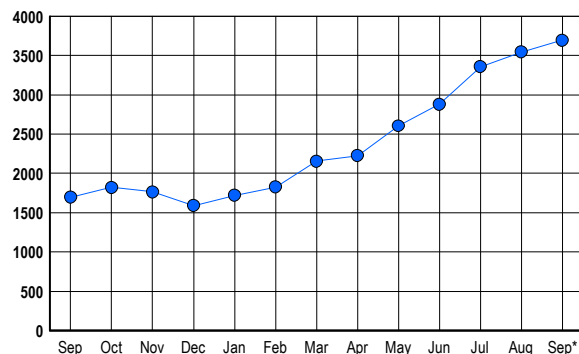
### September 2006

### LISTINGS

| Prices Range          | New This Month |             |             | Total Actives |             |              |
|-----------------------|----------------|-------------|-------------|---------------|-------------|--------------|
|                       | 2006           | 2005        | % Change    | 2006          | 2005        | % Change     |
| 0 - 149,999           | 9              | 18          | -50.0       | 6             | 23          | -73.9        |
| 150,000 - 199,999     | 24             | 75          | -68.0       | 32            | 43          | -25.6        |
| 200,000 - 299,999     | 291            | 439         | -33.7       | 483           | 285         | 69.5         |
| 300,000 - 399,999     | 657            | 692         | -5.1        | 1,406         | 679         | 107.1        |
| 400,000 - 499,999     | 292            | 230         | 27.0        | 760           | 287         | 164.8        |
| 500,000 - 599,999     | 132            | 139         | -5.0        | 454           | 188         | 141.5        |
| 600,000 - 699,999     | 88             | 65          | 35.4        | 305           | 96          | 217.7        |
| 700,000 - 799,999     | 16             | 23          | -30.4       | 128           | 41          | 212.2        |
| 800,000 - 899,999     | 19             | 9           | 111.1       | 52            | 26          | 100.0        |
| 900,000 - 999,999     | 6              | 1           | 500.0       | 18            | 6           | 200.0        |
| 1,000,000 - 1,249,999 | 5              | 3           | 66.7        | 26            | 7           | 271.4        |
| 1,250,000 - 1,499,999 | 3              | 0           | 300.0       | 13            | 3           | 333.3        |
| 1,500,000 +           | 3              | 4           | -25.0       | 13            | 13          | 0.0          |
| <b>TOTALS</b>         | <b>1545</b>    | <b>1698</b> | <b>-9.0</b> | <b>3696</b>   | <b>1697</b> | <b>117.8</b> |

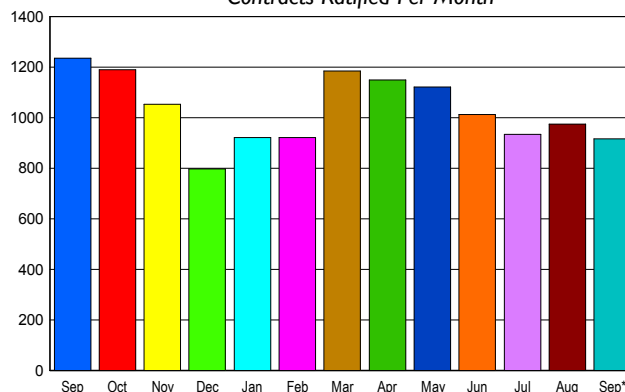
### INVENTORY TREND

Listings Active at End of Month



### SALES TREND

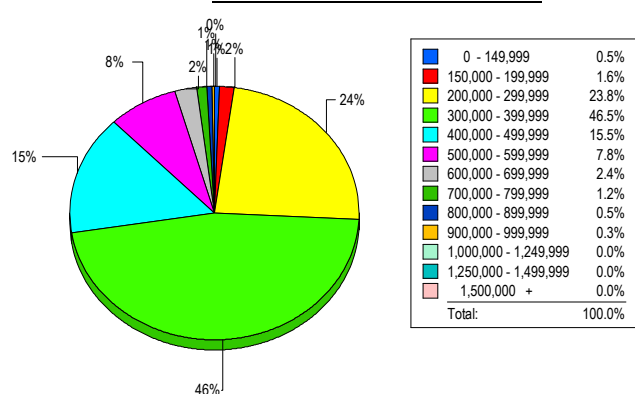
Contracts Ratified Per Month



### CONTRACTS

| Price Range           | New This Month |             |              | Year-To-Date |             |              |
|-----------------------|----------------|-------------|--------------|--------------|-------------|--------------|
|                       | 2006           | 2005        | % Change     | 2006         | 2005        | % Change     |
| 0 - 149,999           | 6              | 13          | -53.8        | 60           | 263         | -77.2        |
| 150,000 - 199,999     | 20             | 83          | -75.9        | 256          | 897         | -71.5        |
| 200,000 - 299,999     | 242            | 361         | -33.0        | 2,184        | 3,526       | -38.1        |
| 300,000 - 399,999     | 420            | 520         | -19.2        | 3,829        | 3,485       | 9.9          |
| 400,000 - 499,999     | 123            | 121         | 1.7          | 1,200        | 940         | 27.7         |
| 500,000 - 599,999     | 64             | 87          | -26.4        | 568          | 533         | 6.6          |
| 600,000 - 699,999     | 26             | 35          | -25.7        | 273          | 180         | 51.7         |
| 700,000 - 799,999     | 7              | 10          | -30.0        | 79           | 63          | 25.4         |
| 800,000 - 899,999     | 6              | 5           | 20.0         | 32           | 19          | 68.4         |
| 900,000 - 999,999     | 2              | 1           | 100.0        | 16           | 6           | 166.7        |
| 1,000,000 - 1,249,999 | 0              | 1           | -100.0       | 9            | 4           | 125.0        |
| 1,250,000 - 1,499,999 | 0              | 0           | 0.0          | 6            | 3           | 100.0        |
| 1,500,000 +           | 0              | 0           | 0.0          | 4            | 7           | -42.9        |
| <b>TOTALS</b>         | <b>916</b>     | <b>1237</b> | <b>-25.9</b> | <b>8516</b>  | <b>9926</b> | <b>-14.2</b> |

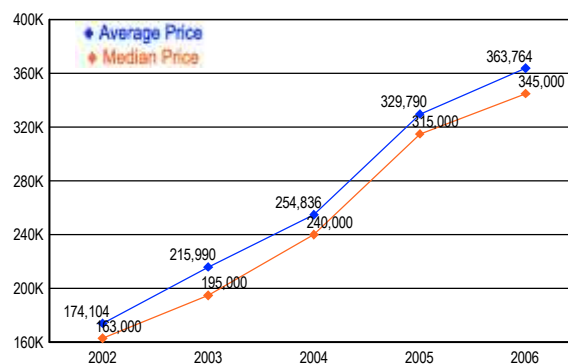
### MARKET BY PRICE RANGE



### SETTLEMENTS

| Price Range           | New This Month |            |              | Year-to-Date |             |              |
|-----------------------|----------------|------------|--------------|--------------|-------------|--------------|
|                       | 2006           | 2005       | % Change     | 2006         | 2005        | % Change     |
| 0 - 149,999           | 4              | 17         | -76.5        | 56           | 292         | -80.8        |
| 150,000 - 199,999     | 12             | 41         | -70.7        | 256          | 786         | -67.4        |
| 200,000 - 299,999     | 180            | 276        | -34.8        | 2,058        | 3,276       | -37.2        |
| 300,000 - 399,999     | 352            | 422        | -16.6        | 3,724        | 3,289       | 13.2         |
| 400,000 - 499,999     | 117            | 133        | -12.0        | 1,235        | 931         | 32.7         |
| 500,000 - 599,999     | 59             | 60         | -1.7         | 540          | 492         | 9.8          |
| 600,000 - 699,999     | 18             | 28         | -35.7        | 260          | 150         | 73.3         |
| 700,000 - 799,999     | 9              | 9          | 0.0          | 86           | 51          | 68.6         |
| 800,000 - 899,999     | 4              | 3          | 33.3         | 35           | 15          | 133.3        |
| 900,000 - 999,999     | 2              | 2          | 0.0          | 12           | 4           | 200.0        |
| 1,000,000 - 1,249,999 | 0              | 1          | -100.0       | 13           | 6           | 116.7        |
| 1,250,000 - 1,499,999 | 0              | 0          | 0.0          | 5            | 0           | 500.0        |
| 1,500,000 +           | 0              | 0          | 0.0          | 2            | 7           | -71.4        |
| <b>TOTALS</b>         | <b>757</b>     | <b>992</b> | <b>-23.7</b> | <b>8282</b>  | <b>9299</b> | <b>-10.9</b> |

### AVERAGE & MEDIAN PRICE



DATA SOURCE: Metropolitan Regional Information Systems, Inc. (MRIS)

NOTES: Properties not listed through this Multiple Listing Service are not reflected. The term "sales" represents ratified purchase contracts. Current year information is preliminary and subject to revision. Current year-to-date contract information may not equal the sum of the monthly contract totals reported in