

PRINCE GEORGES COUNTY

Residential Market Report

HOUSING REPORT

Single Family Homes

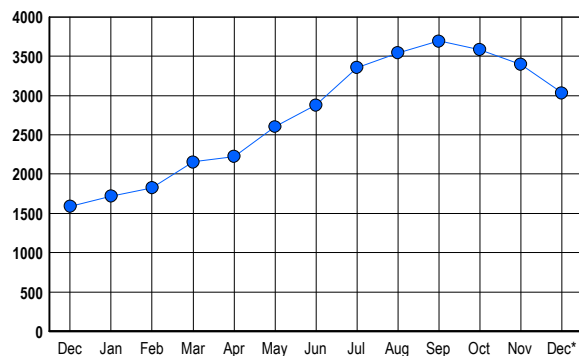
December 2006

LISTINGS

| Prices Range | New This Month | | | Total Actives | | |
|-----------------------|----------------|------------|-------------|---------------|-------------|-------------|
| | 2006 | 2005 | % Change | 2006 | 2005 | % Change |
| 0 - 149,999 | 2 | 13 | -84.6 | 7 | 20 | -65.0 |
| 150,000 - 199,999 | 19 | 38 | -50.0 | 30 | 47 | -36.2 |
| 200,000 - 299,999 | 181 | 241 | -24.9 | 391 | 272 | 43.8 |
| 300,000 - 399,999 | 356 | 348 | 2.3 | 1,236 | 596 | 107.4 |
| 400,000 - 499,999 | 147 | 114 | 28.9 | 589 | 258 | 128.3 |
| 500,000 - 599,999 | 76 | 55 | 38.2 | 374 | 172 | 117.4 |
| 600,000 - 699,999 | 41 | 28 | 46.4 | 214 | 97 | 120.6 |
| 700,000 - 799,999 | 19 | 22 | -13.6 | 79 | 55 | 43.6 |
| 800,000 - 899,999 | 5 | 7 | -28.6 | 48 | 28 | 71.4 |
| 900,000 - 999,999 | 7 | 3 | 133.3 | 18 | 13 | 38.5 |
| 1,000,000 - 1,249,999 | 3 | 3 | 0.0 | 22 | 12 | 83.3 |
| 1,250,000 - 1,499,999 | 0 | 2 | -100.0 | 16 | 5 | 220.0 |
| 1,500,000 + | 2 | 2 | 0.0 | 12 | 16 | -25.0 |
| TOTALS | 858 | 876 | -2.1 | 3036 | 1591 | 90.8 |

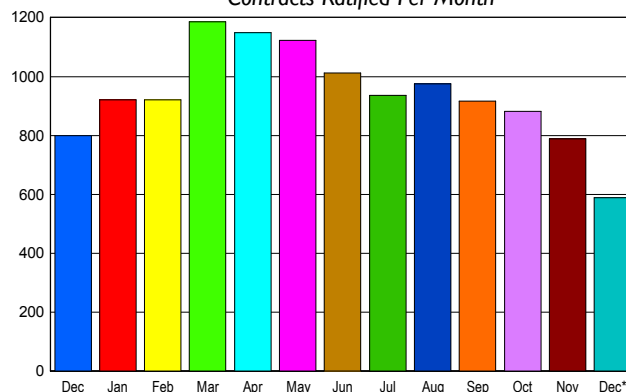
INVENTORY TREND

Listings Active at End of Month



SALES TREND

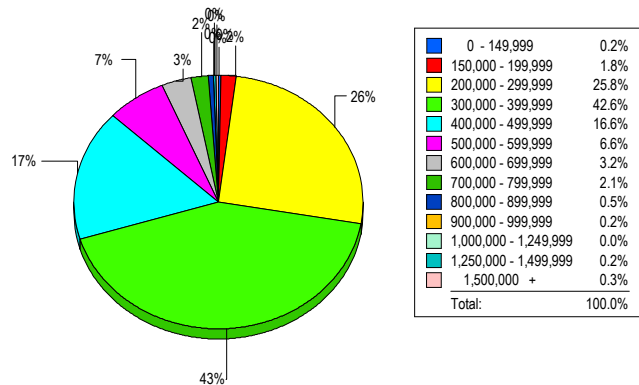
Contracts Ratified Per Month



CONTRACTS

| Price Range | New This Month | | | Year-To-Date | | |
|-----------------------|----------------|------------|--------------|--------------|--------------|--------------|
| | 2006 | 2005 | % Change | 2006 | 2005 | % Change |
| 0 - 149,999 | 4 | 7 | -42.9 | 69 | 298 | -76.8 |
| 150,000 - 199,999 | 14 | 40 | -65.0 | 295 | 1,020 | -71.1 |
| 200,000 - 299,999 | 153 | 260 | -41.2 | 2,729 | 4,364 | -37.5 |
| 300,000 - 399,999 | 250 | 319 | -21.6 | 4,768 | 4,665 | 2.2 |
| 400,000 - 499,999 | 99 | 85 | 16.5 | 1,527 | 1,263 | 20.9 |
| 500,000 - 599,999 | 35 | 55 | -36.4 | 705 | 713 | -1.1 |
| 600,000 - 699,999 | 16 | 17 | -5.9 | 346 | 238 | 45.4 |
| 700,000 - 799,999 | 11 | 12 | -8.3 | 123 | 87 | 41.4 |
| 800,000 - 899,999 | 6 | 2 | 200.0 | 45 | 26 | 73.1 |
| 900,000 - 999,999 | 0 | 0 | 0.0 | 18 | 8 | 125.0 |
| 1,000,000 - 1,249,999 | 0 | 1 | -100.0 | 12 | 7 | 71.4 |
| 1,250,000 - 1,499,999 | 0 | 1 | -100.0 | 9 | 4 | 125.0 |
| 1,500,000 + | 1 | 0 | 100.0 | 8 | 9 | -11.1 |
| TOTALS | 589 | 799 | -26.3 | 10654 | 12702 | -16.1 |

MARKET BY PRICE RANGE



SETTLEMENTS

| Price Range | New This Month | | | Year-to-Date | | |
|-----------------------|----------------|------------|--------------|--------------|--------------|--------------|
| | 2006 | 2005 | % Change | 2006 | 2005 | % Change |
| 0 - 149,999 | 1 | 12 | -91.7 | 66 | 327 | -79.8 |
| 150,000 - 199,999 | 12 | 27 | -55.6 | 298 | 931 | -68.0 |
| 200,000 - 299,999 | 171 | 285 | -40.0 | 2,661 | 4,224 | -37.0 |
| 300,000 - 399,999 | 282 | 404 | -30.2 | 4,813 | 4,738 | 1.6 |
| 400,000 - 499,999 | 110 | 142 | -22.5 | 1,603 | 1,336 | 20.0 |
| 500,000 - 599,999 | 44 | 79 | -44.3 | 712 | 722 | -1.4 |
| 600,000 - 699,999 | 21 | 29 | -27.6 | 352 | 236 | 49.2 |
| 700,000 - 799,999 | 14 | 8 | 75.0 | 132 | 82 | 61.0 |
| 800,000 - 899,999 | 3 | 3 | 0.0 | 45 | 21 | 114.3 |
| 900,000 - 999,999 | 1 | 2 | -50.0 | 19 | 8 | 137.5 |
| 1,000,000 - 1,249,999 | 0 | 0 | 0.0 | 17 | 9 | 88.9 |
| 1,250,000 - 1,499,999 | 1 | 1 | 0.0 | 8 | 1 | 700.0 |
| 1,500,000 + | 2 | 0 | 200.0 | 6 | 8 | -25.0 |
| TOTALS | 662 | 992 | -33.3 | 10732 | 12643 | -15.1 |

AVERAGE & MEDIAN PRICE

◆ Average Price
◆ Median Price

DATA SOURCE: Metropolitan Regional Information Systems, Inc. (MRIS)

NOTES: Properties not listed through this Multiple Listing Service are not reflected. The term "sales" represents ratified purchase contracts. Current year information is preliminary and subject to revision. Current year-to-date contract information may not equal the sum of the monthly contract totals reported in