

# PRINCE GEORGES COUNTY

## Residential Market Report

# HOUSING REPORT

## Single Family Homes

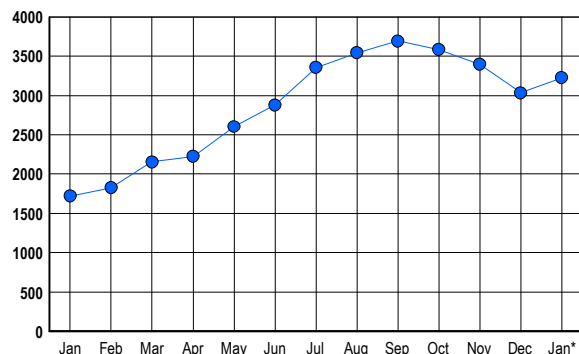
### January 2007

### LISTINGS

Prices Range	New This Month			Total Actives		
	2007	2006	% Change	2007	2006	% Change
0 - 149,999	6	21	-71.4	3	27	-88.9
150,000 - 199,999	17	64	-73.4	18	48	-62.5
200,000 - 299,999	279	308	-9.4	437	295	48.1
300,000 - 399,999	551	496	11.1	1,276	640	99.4
400,000 - 499,999	266	165	61.2	619	265	133.6
500,000 - 599,999	146	85	71.8	426	183	132.8
600,000 - 699,999	81	48	68.8	236	120	96.7
700,000 - 799,999	37	31	19.4	92	67	37.3
800,000 - 899,999	15	8	87.5	51	23	121.7
900,000 - 999,999	6	4	50.0	20	12	66.7
1,000,000 - 1,249,999	4	7	-42.9	22	14	57.1
1,250,000 - 1,499,999	4	3	33.3	15	6	150.0
1,500,000 +	2	9	-77.8	11	19	-42.1
<b>TOTALS</b>	<b>1414</b>	<b>1249</b>	<b>13.2</b>	<b>3226</b>	<b>1719</b>	<b>87.7</b>

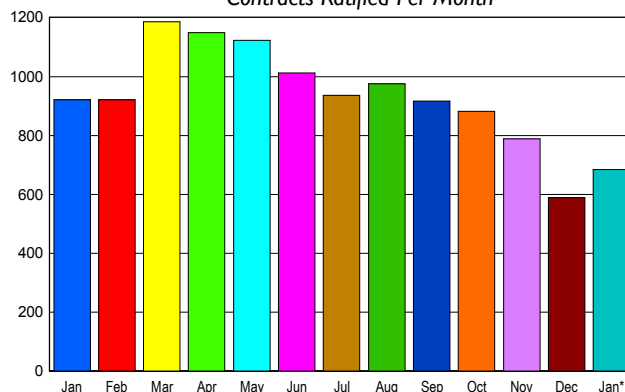
### INVENTORY TREND

Listings Active at End of Month



### SALES TREND

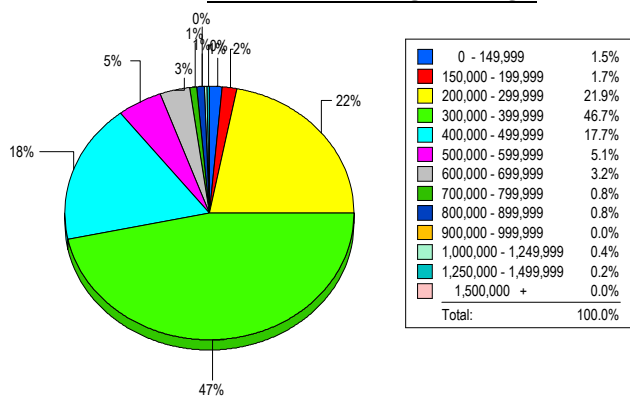
Contracts Ratified Per Month



### CONTRACTS

Price Range	New This Month			Year-To-Date		
	2007	2006	% Change	2007	2006	% Change
0 - 149,999	2	8	-75.0	2	8	-75.0
150,000 - 199,999	19	63	-69.8	19	63	-69.8
200,000 - 299,999	180	263	-31.6	180	263	-31.6
300,000 - 399,999	286	385	-25.7	286	385	-25.7
400,000 - 499,999	125	103	21.4	125	103	21.4
500,000 - 599,999	42	56	-25.0	42	56	-25.0
600,000 - 699,999	16	26	-38.5	16	26	-38.5
700,000 - 799,999	8	8	0.0	8	8	0.0
800,000 - 899,999	2	3	-33.3	2	3	-33.3
900,000 - 999,999	1	1	0.0	1	1	0.0
1,000,000 - 1,249,999	3	4	-25.0	3	4	-25.0
1,250,000 - 1,499,999	0	1	-100.0	0	1	-100.0
1,500,000 +	0	0	0.0	0	0	0.0
<b>TOTALS</b>	<b>684</b>	<b>921</b>	<b>-25.7</b>	<b>684</b>	<b>921</b>	<b>-25.7</b>

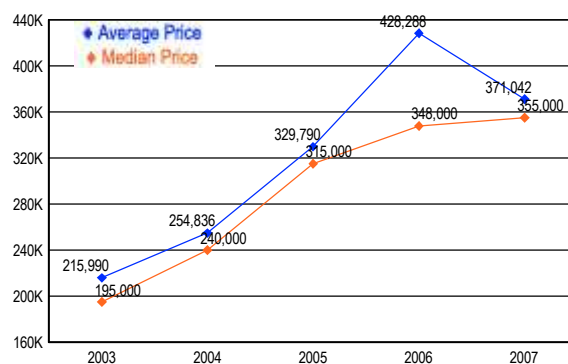
### MARKET BY PRICE RANGE



### SETTLEMENTS

Price Range	New This Month			Year-to-Date		
	2007	2006	% Change	2007	2006	% Change
0 - 149,999	7	7	0.0	7	7	0.0
150,000 - 199,999	8	37	-78.4	8	37	-78.4
200,000 - 299,999	104	181	-42.5	104	181	-42.5
300,000 - 399,999	222	263	-15.6	222	263	-15.6
400,000 - 499,999	84	89	-5.6	84	89	-5.6
500,000 - 599,999	24	42	-42.9	24	42	-42.9
600,000 - 699,999	15	14	7.1	15	14	7.1
700,000 - 799,999	4	7	-42.9	4	7	-42.9
800,000 - 899,999	4	3	33.3	4	3	33.3
900,000 - 999,999	0	0	0.0	0	0	0.0
1,000,000 - 1,249,999	2	4	-50.0	2	4	-50.0
1,250,000 - 1,499,999	1	0	100.0	1	0	100.0
1,500,000 +	0	1	-100.0	0	1	-100.0
<b>TOTALS</b>	<b>475</b>	<b>648</b>	<b>-26.7</b>	<b>475</b>	<b>648</b>	<b>-26.7</b>

### AVERAGE & MEDIAN PRICE



DATA SOURCE: Metropolitan Regional Information Systems, Inc. (MRIS)

NOTES: Properties not listed through this Multiple Listing Service are not reflected. The term "sales" represents ratified purchase contracts. Current year information is preliminary and subject to revision. Current year- to- date contract information may not equal the sum of the monthly contract totals reported in