

# PRINCE GEORGES COUNTY

## Residential Market Report

# HOUSING REPORT

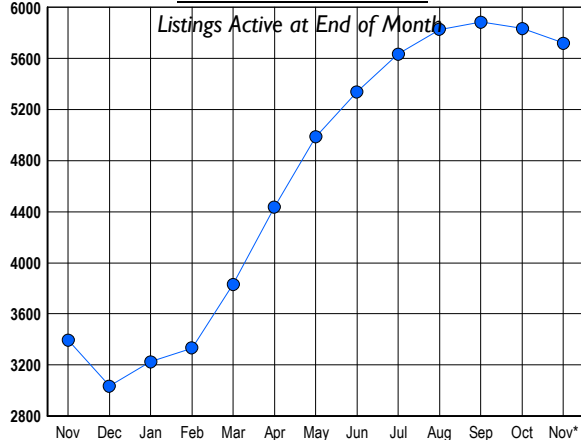
## Single Family Homes

### November 2007

### LISTINGS

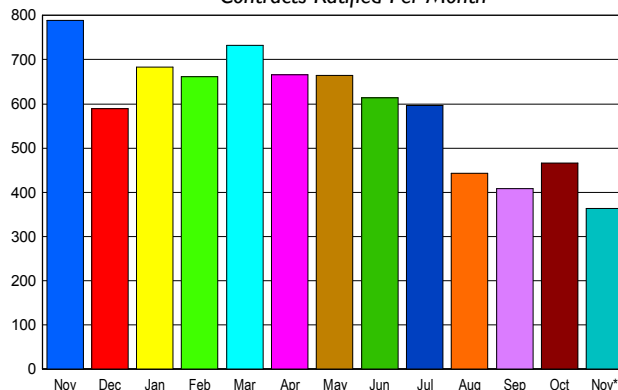
Prices Range	New This Month			Total Actives		
	2007	2006	% Change	2007	2006	% Change
0 - 149,999	9	7	28.6	24	7	242.9
150,000 - 199,999	27	14	92.9	101	20	405.0
200,000 - 299,999	269	207	30.0	1,147	392	192.6
300,000 - 399,999	481	473	1.7	2,292	1,330	72.3
400,000 - 499,999	236	220	7.3	978	722	35.5
500,000 - 599,999	93	106	-12.3	567	412	37.6
600,000 - 699,999	50	49	2.0	299	275	8.7
700,000 - 799,999	24	30	-20.0	135	108	25.0
800,000 - 899,999	10	14	-28.6	71	60	18.3
900,000 - 999,999	5	4	25.0	43	20	115.0
1,000,000 - 1,249,999	5	1	400.0	24	21	14.3
1,250,000 - 1,499,999	3	4	-25.0	12	16	-25.0
1,500,000 +	11	6	83.3	26	14	85.7
<b>TOTALS</b>	<b>1223</b>	<b>1135</b>	<b>7.8</b>	<b>5719</b>	<b>3397</b>	<b>68.4</b>

### INVENTORY TREND



### SALES TREND

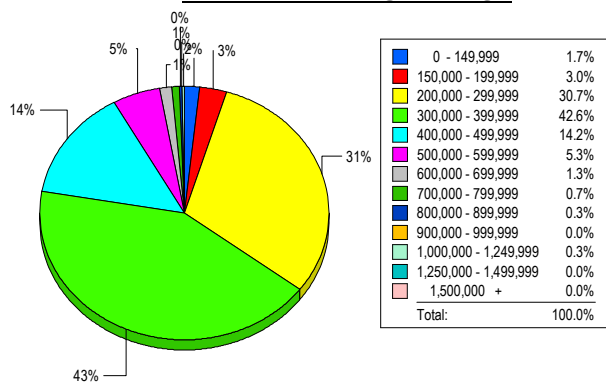
Contracts Ratified Per Month



### CONTRACTS

Price Range	New This Month			Year-To-Date		
	2007	2006	% Change	2007	2006	% Change
0 - 149,999	9	1	800.0	49	64	-23.4
150,000 - 199,999	17	17	0.0	161	285	-43.5
200,000 - 299,999	109	227	-52.0	1,569	2,603	-39.7
300,000 - 399,999	169	346	-51.2	2,578	4,527	-43.1
400,000 - 499,999	37	103	-64.1	808	1,415	-42.9
500,000 - 599,999	8	51	-84.3	314	668	-53.0
600,000 - 699,999	8	19	-57.9	117	326	-64.1
700,000 - 799,999	2	15	-86.7	39	112	-65.2
800,000 - 899,999	0	5	-100.0	22	38	-42.1
900,000 - 999,999	1	0	100.0	11	19	-42.1
1,000,000 - 1,249,999	1	2	-50.0	14	12	16.7
1,250,000 - 1,499,999	2	1	100.0	6	9	-33.3
1,500,000 +	1	2	-50.0	5	5	0.0
<b>TOTALS</b>	<b>364</b>	<b>789</b>	<b>-53.9</b>	<b>5693</b>	<b>10083</b>	<b>-43.5</b>

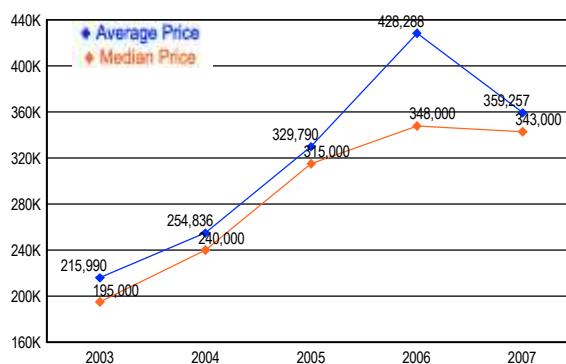
### MARKET BY PRICE RANGE



### SETTLEMENTS

Price Range	New This Month			Year-to-Date		
	2007	2006	% Change	2007	2006	% Change
0 - 149,999	5	4	25.0	53	65	-18.5
150,000 - 199,999	9	11	-18.2	147	282	-47.9
200,000 - 299,999	93	155	-40.0	1,493	2,449	-39.0
300,000 - 399,999	129	317	-59.3	2,588	4,473	-42.1
400,000 - 499,999	43	102	-57.8	848	1,469	-42.3
500,000 - 599,999	16	45	-64.4	328	657	-50.1
600,000 - 699,999	4	17	-76.5	118	321	-63.2
700,000 - 799,999	2	15	-86.7	36	120	-70.0
800,000 - 899,999	1	3	-66.7	34	41	-17.1
900,000 - 999,999	0	2	-100.0	8	18	-55.6
1,000,000 - 1,249,999	1	1	0.0	14	15	-6.7
1,250,000 - 1,499,999	0	2	-100.0	5	7	-28.6
1,500,000 +	0	0	0.0	5	3	66.7
<b>TOTALS</b>	<b>303</b>	<b>674</b>	<b>-55.0</b>	<b>5677</b>	<b>9920</b>	<b>-42.8</b>

### AVERAGE & MEDIAN PRICE



DATA SOURCE: Metropolitan Regional Information Systems, Inc. (MRIS)

NOTES: Properties not listed through this Multiple Listing Service are not reflected. The term "sales" represents ratified purchase contracts. Current year information is preliminary and subject to revision. Current year-to-date contract information may not equal the sum of the monthly contract totals reported in