

# PRINCE GEORGES COUNTY

## Residential Market Report

# HOUSING REPORT

## Single Family Homes

### April 2008

### LISTINGS

Prices Range	New This Month			Total Actives		
	2008	2007	% Change	2008	2007	% Change
0 - 149,999	13	8	62.5	63	11	472.7
150,000 - 199,999	68	31	119.4	249	41	507.3
200,000 - 299,999	496	294	68.7	1,835	554	231.2
300,000 - 399,999	600	700	-14.3	2,267	1,730	31.0
400,000 - 499,999	193	365	-47.1	851	941	-9.6
500,000 - 599,999	115	154	-25.3	483	517	-6.6
600,000 - 699,999	53	94	-43.6	279	335	-16.7
700,000 - 799,999	17	40	-57.5	122	140	-12.9
800,000 - 899,999	7	21	-66.7	54	69	-21.7
900,000 - 999,999	6	9	-33.3	41	33	24.2
1,000,000 - 1,249,999	5	7	-28.6	22	26	-15.4
1,250,000 - 1,499,999	2	7	-71.4	11	18	-38.9
1,500,000 +	6	8	-25.0	26	23	13.0
<b>TOTALS</b>	<b>1581</b>	<b>1738</b>	<b>-9.0</b>	<b>6303</b>	<b>4438</b>	<b>42.0</b>

### CONTRACTS

Price Range	New This Month			Year-To-Date		
	2008	2007	% Change	2008	2007	% Change
0 - 149,999	9	8	12.5	31	16	93.8
150,000 - 199,999	30	12	150.0	90	57	57.9
200,000 - 299,999	218	170	28.2	613	641	-4.4
300,000 - 399,999	173	293	-41.0	493	1,167	-57.8
400,000 - 499,999	42	113	-62.8	145	396	-63.4
500,000 - 599,999	21	46	-54.3	78	170	-54.1
600,000 - 699,999	5	13	-61.5	20	59	-66.1
700,000 - 799,999	1	7	-85.7	3	22	-86.4
800,000 - 899,999	0	2	-100.0	4	12	-66.7
900,000 - 999,999	1	0	100.0	1	3	-66.7
1,000,000 - 1,249,999	2	0	200.0	3	7	-57.1
1,250,000 - 1,499,999	0	0	0.0	0	1	-100.0
1,500,000 +	0	2	-100.0	0	4	-100.0
<b>TOTALS</b>	<b>502</b>	<b>666</b>	<b>-24.6</b>	<b>1481</b>	<b>2555</b>	<b>-42.0</b>

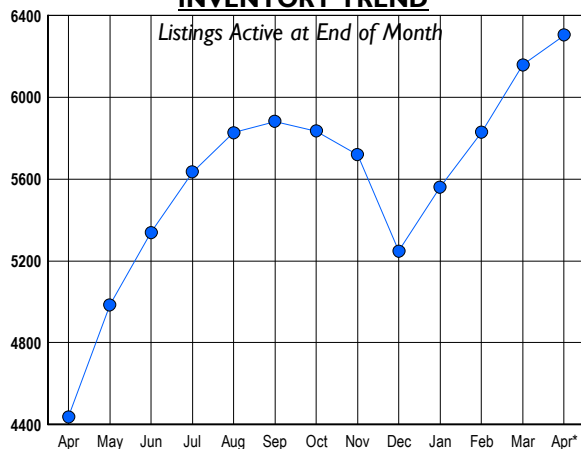
### SETTLEMENTS

Price Range	New This Month			Year-to-Date		
	2008	2007	% Change	2008	2007	% Change
0 - 149,999	7	2	250.0	20	16	25.0
150,000 - 199,999	17	8	112.5	55	55	0.0
200,000 - 299,999	94	134	-29.9	379	546	-30.6
300,000 - 399,999	102	254	-59.8	387	1,063	-63.6
400,000 - 499,999	29	70	-58.6	98	362	-72.9
500,000 - 599,999	7	37	-81.1	52	139	-62.6
600,000 - 699,999	4	12	-66.7	14	59	-76.3
700,000 - 799,999	1	2	-50.0	3	17	-82.4
800,000 - 899,999	2	5	-60.0	5	16	-68.8
900,000 - 999,999	1	0	100.0	3	2	50.0
1,000,000 - 1,249,999	1	2	-50.0	2	9	-77.8
1,250,000 - 1,499,999	0	0	0.0	0	2	-100.0
1,500,000 +	0	0	0.0	0	2	-100.0
<b>TOTALS</b>	<b>265</b>	<b>526</b>	<b>-49.6</b>	<b>1018</b>	<b>2288</b>	<b>-55.5</b>

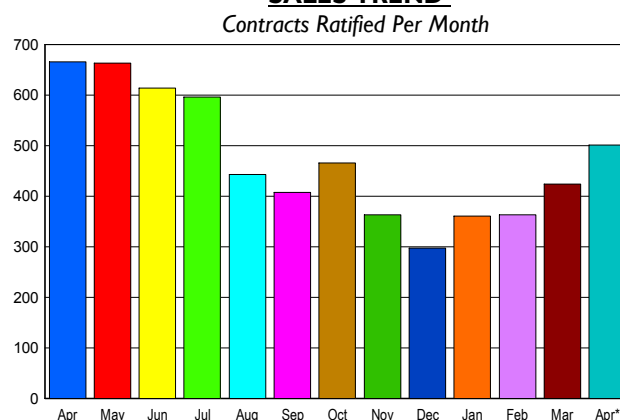
DATA SOURCE: Metropolitan Regional Information Systems, Inc. (MRIS)

NOTES: Properties not listed through this Multiple Listing Service are not reflected. The term "sales" represents ratified purchase contracts. Current year information is preliminary and subject to revision. Current year- to- date contract information may not equal the sum of the monthly contract totals reported in

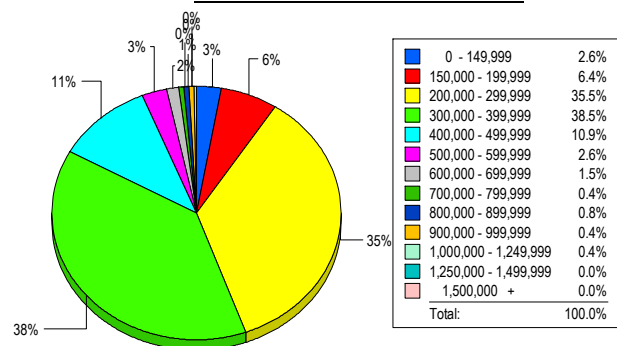
### INVENTORY TREND



### SALES TREND



### MARKET BY PRICE RANGE



### AVERAGE & MEDIAN PRICE

