

# PRINCE GEORGES COUNTY

## Residential Market Report

# HOUSING REPORT

## Single Family Homes

### October 2008

### LISTINGS

Prices Range	New This Month			Total Actives		
	2008	2007	% Change	2008	2007	% Change
0 - 149,999	65	15	333.3	254	25	916.0
150,000 - 199,999	146	31	371.0	657	82	701.2
200,000 - 299,999	516	369	39.8	2,389	1,086	120.0
300,000 - 399,999	330	610	-45.9	1,709	2,388	-28.4
400,000 - 499,999	116	244	-52.5	683	1,009	-32.3
500,000 - 599,999	56	112	-50.0	303	600	-49.5
600,000 - 699,999	24	82	-70.7	149	324	-54.0
700,000 - 799,999	10	34	-70.6	81	140	-42.1
800,000 - 899,999	8	13	-38.5	50	73	-31.5
900,000 - 999,999	9	11	-18.2	31	44	-29.5
1,000,000 - 1,249,999	0	9	-100.0	12	27	-55.6
1,250,000 - 1,499,999	2	5	-60.0	13	13	0.0
1,500,000 +	2	1	100.0	28	23	21.7
<b>TOTALS</b>	<b>1284</b>	<b>1536</b>	<b>-16.4</b>	<b>6359</b>	<b>5834</b>	<b>9.0</b>

### CONTRACTS

Price Range	New This Month			Year-To-Date		
	2008	2007	% Change	2008	2007	% Change
0 - 149,999	50	9	455.6	150	44	240.9
150,000 - 199,999	74	22	236.4	365	148	146.6
200,000 - 299,999	219	154	42.2	1,738	1,467	18.5
300,000 - 399,999	86	190	-54.7	1,123	2,435	-53.9
400,000 - 499,999	38	47	-19.1	415	770	-46.1
500,000 - 599,999	14	28	-50.0	151	308	-51.0
600,000 - 699,999	12	12	0.0	57	112	-49.1
700,000 - 799,999	1	2	-50.0	15	39	-61.5
800,000 - 899,999	0	2	-100.0	7	22	-68.2
900,000 - 999,999	0	0	0.0	5	10	-50.0
1,000,000 - 1,249,999	1	0	100.0	6	11	-45.5
1,250,000 - 1,499,999	0	0	0.0	2	4	-50.0
1,500,000 +	0	0	0.0	0	4	-100.0
<b>TOTALS</b>	<b>495</b>	<b>466</b>	<b>6.2</b>	<b>4034</b>	<b>5374</b>	<b>-24.9</b>

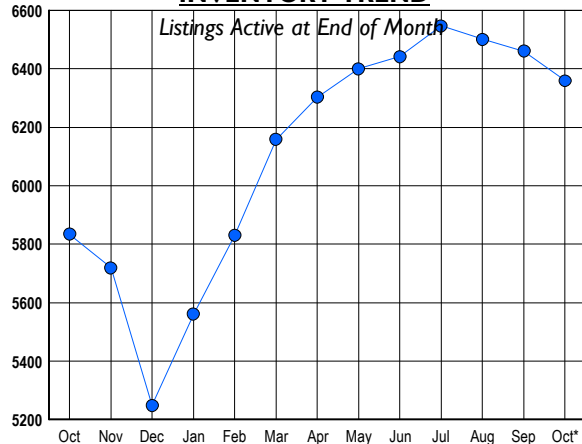
### SETTLEMENTS

Price Range	New This Month			Year-to-Date		
	2008	2007	% Change	2008	2007	% Change
0 - 149,999	23	3	666.7	98	46	113.0
150,000 - 199,999	36	12	200.0	233	135	72.6
200,000 - 299,999	158	104	51.9	1,482	1,384	7.1
300,000 - 399,999	86	141	-39.0	1,091	2,436	-55.2
400,000 - 499,999	29	42	-31.0	359	798	-55.0
500,000 - 599,999	6	23	-73.9	122	308	-60.4
600,000 - 699,999	4	3	33.3	52	112	-53.6
700,000 - 799,999	1	2	-50.0	16	34	-52.9
800,000 - 899,999	0	1	-100.0	10	33	-69.7
900,000 - 999,999	0	0	0.0	4	6	-33.3
1,000,000 - 1,249,999	0	0	0.0	4	12	-66.7
1,250,000 - 1,499,999	0	0	0.0	1	5	-80.0
1,500,000 +	0	0	0.0	0	5	-100.0
<b>TOTALS</b>	<b>343</b>	<b>331</b>	<b>3.6</b>	<b>3472</b>	<b>5314</b>	<b>-34.7</b>

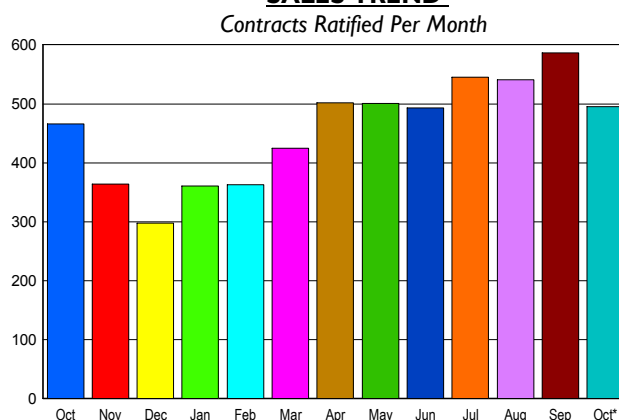
DATA SOURCE: Metropolitan Regional Information Systems, Inc. (MRIS)

NOTES: Properties not listed through this Multiple Listing Service are not reflected. The term "sales" represents ratified purchase contracts. Current year information is preliminary and subject to revision. Current year-to-date contract information may not equal the sum of the monthly contract totals reported in

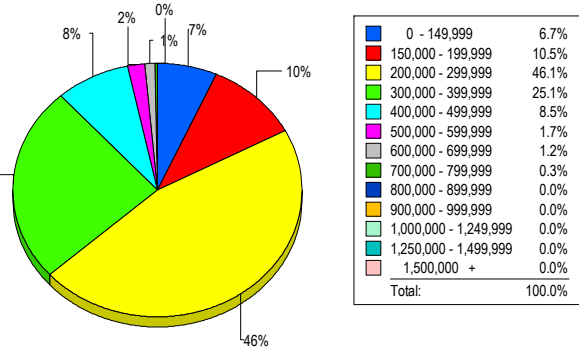
### INVENTORY TREND



### SALES TREND



### MARKET BY PRICE RANGE



### AVERAGE & MEDIAN PRICE

