

# PRINCE GEORGES COUNTY

## Residential Market Report

# HOUSING REPORT

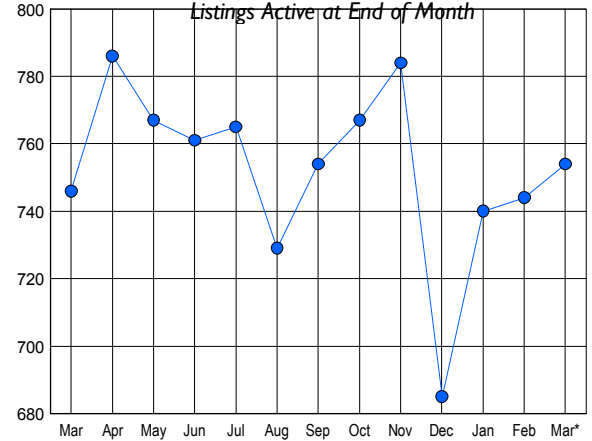
## CONDO & COOPS

March 2009

### LISTINGS

Price Range	New This Month			Total Actives		
	2009	2008	% Change	2009	2008	% Change
0 - 149,999	68	27	151.9	308	118	161.0
150,000 - 199,999	50	75	-33.3	214	252	-15.1
200,000 - 299,999	49	93	-47.3	219	337	-35.0
300,000 - 399,999	2	7	-71.4	10	35	-71.4
400,000 - 499,999	2	1	100.0	2	2	0.0
500,000 - 599,999	0	0	0.0	1	2	-50.0
600,000 - 699,999	0	0	0.0	0	0	0.0
700,000 - 799,999	0	0	0.0	0	0	0.0
800,000 - 899,999	0	0	0.0	0	0	0.0
900,000 - 999,999	0	0	0.0	0	0	0.0
1,000,000 - 1,249,999	0	0	0.0	0	0	0.0
1,250,000 - 1,499,999	0	0	0.0	0	0	0.0
1,500,000 +	0	0	0.0	0	0	0.0
<b>TOTALS</b>	<b>171</b>	<b>203</b>	<b>-15.8</b>	<b>754</b>	<b>746</b>	<b>1.1</b>

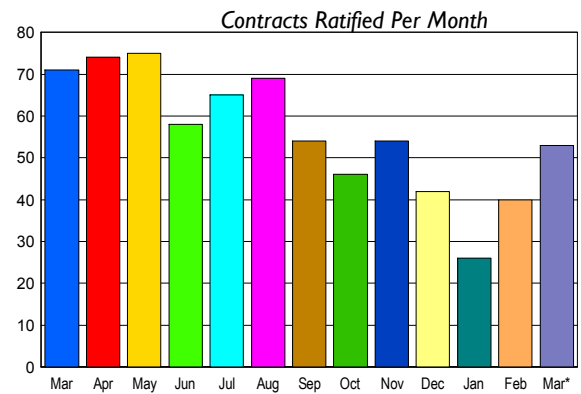
### INVENTORY TREND



### CONTRACTS

Price Range	New This Month			Year-To-Date		
	2009	2008	% Change	2009	2008	% Change
0 - 149,999	24	14	71.4	56	34	64.7
150,000 - 199,999	14	25	-44.0	29	67	-56.7
200,000 - 299,999	14	31	-54.8	29	93	-68.8
300,000 - 399,999	1	0	100.0	1	2	-50.0
400,000 - 499,999	0	1	-100.0	0	1	-100.0
500,000 - 599,999	0	0	0.0	0	0	0.0
600,000 - 699,999	0	0	0.0	0	0	0.0
700,000 - 799,999	0	0	0.0	0	0	0.0
800,000 - 899,999	0	0	0.0	0	0	0.0
900,000 - 999,999	0	0	0.0	0	0	0.0
1,000,000 - 1,249,999	0	0	0.0	0	0	0.0
1,250,000 - 1,499,999	0	0	0.0	0	0	0.0
1,500,000 +	0	0	0.0	0	0	0.0
<b>TOTALS</b>	<b>53</b>	<b>71</b>	<b>-25.4</b>	<b>115</b>	<b>197</b>	<b>-41.6</b>

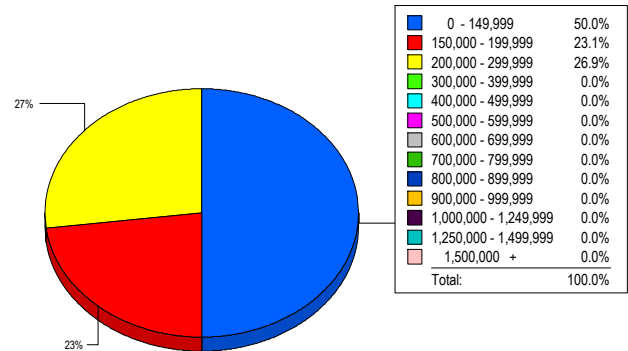
### SALES TREND



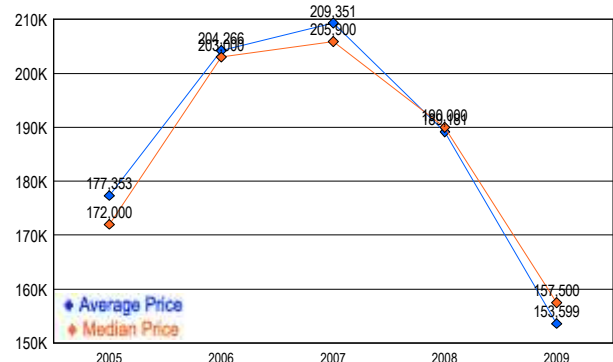
### SETTLEMENTS

Price Range	New This Month			Year-To-Date		
	2009	2008	% Change	2009	2008	% Change
0 - 149,999	13	9	44.4	36	24	50.0
150,000 - 199,999	6	7	-14.3	23	41	-43.9
200,000 - 299,999	7	27	-74.1	19	75	-74.7
300,000 - 399,999	0	0	0.0	0	3	-100.0
400,000 - 499,999	0	0	0.0	0	1	-100.0
500,000 - 599,999	0	0	0.0	0	0	0.0
600,000 - 699,999	0	0	0.0	0	0	0.0
700,000 - 799,999	0	0	0.0	0	0	0.0
800,000 - 899,999	0	0	0.0	0	0	0.0
900,000 - 999,999	0	0	0.0	0	0	0.0
1,000,000 - 1,249,999	0	0	0.0	0	0	0.0
1,250,000 - 1,499,999	0	0	0.0	0	0	0.0
1,500,000 +	0	0	0.0	0	0	0.0
<b>TOTALS</b>	<b>26</b>	<b>43</b>	<b>-39.5</b>	<b>78</b>	<b>144</b>	<b>-45.8</b>

### MARKET BY PRICE RANGE



### AVERAGE & MEDIAN PRICE



DATA SOURCE: Metropolitan Regional Information Systems, Inc. (MRIS)

NOTES: Properties not listed through this Multiple Listing Service are not reflected. The term "sales" represents ratified purchase contracts. Current year information is preliminary and subject to revision. Current year-to-date contract information may not equal the sum of the monthly contract totals reported in