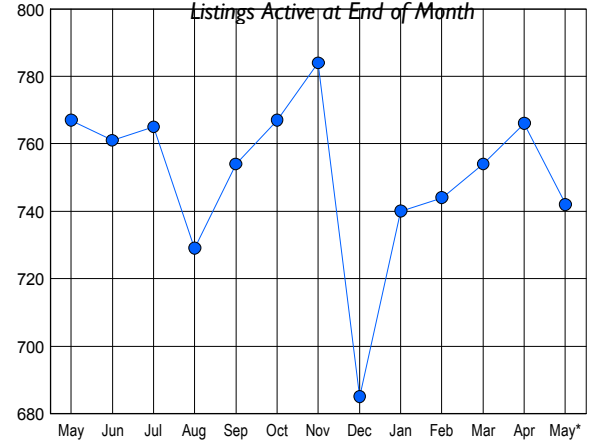


### LISTINGS

Price Range	New This Month			Total Actives		
	2009	2008	% Change	2009	2008	% Change
0 - 149,999	68	37	83.8	323	152	112.5
150,000 - 199,999	54	53	1.9	215	250	-14.0
200,000 - 299,999	34	73	-53.4	190	326	-41.7
300,000 - 399,999	0	14	-100.0	9	34	-73.5
400,000 - 499,999	3	0	300.0	4	3	33.3
500,000 - 599,999	0	0	0.0	0	2	-100.0
600,000 - 699,999	0	0	0.0	0	0	0.0
700,000 - 799,999	0	0	0.0	0	0	0.0
800,000 - 899,999	0	0	0.0	0	0	0.0
900,000 - 999,999	0	0	0.0	0	0	0.0
1,000,000 - 1,249,999	0	0	0.0	1	0	0.0
1,250,000 - 1,499,999	0	0	0.0	0	0	0.0
1,500,000 +	0	0	0.0	0	0	0.0
<b>TOTALS</b>	<b>159</b>	<b>177</b>	<b>-10.2</b>	<b>742</b>	<b>767</b>	<b>-3.3</b>

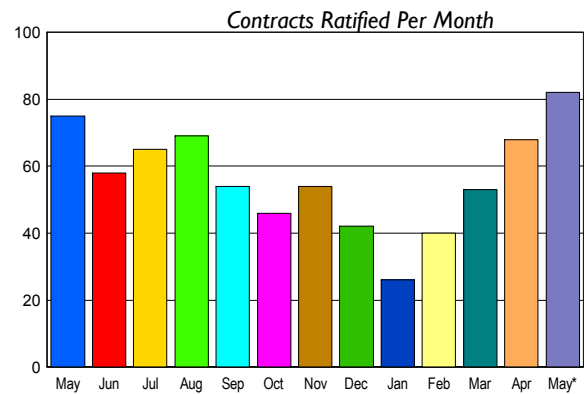
### INVENTORY TREND



### CONTRACTS

Price Range	New This Month			Year-To-Date		
	2009	2008	% Change	2009	2008	% Change
0 - 149,999	38	14	171.4	104	54	92.6
150,000 - 199,999	22	26	-15.4	59	119	-50.4
200,000 - 299,999	20	33	-39.4	63	149	-57.7
300,000 - 399,999	2	1	100.0	4	6	-33.3
400,000 - 499,999	0	1	-100.0	0	1	-100.0
500,000 - 599,999	0	0	0.0	0	0	0.0
600,000 - 699,999	0	0	0.0	0	0	0.0
700,000 - 799,999	0	0	0.0	0	0	0.0
800,000 - 899,999	0	0	0.0	0	0	0.0
900,000 - 999,999	0	0	0.0	0	0	0.0
1,000,000 - 1,249,999	0	0	0.0	0	0	0.0
1,250,000 - 1,499,999	0	0	0.0	0	0	0.0
1,500,000 +	0	0	0.0	0	0	0.0
<b>TOTALS</b>	<b>82</b>	<b>75</b>	<b>9.3</b>	<b>230</b>	<b>329</b>	<b>-30.1</b>

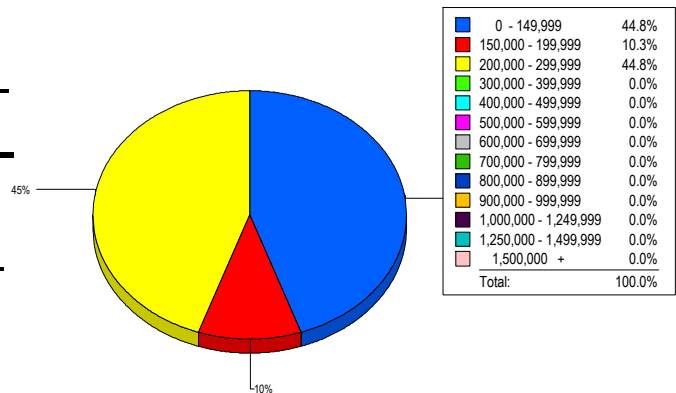
### SALES TREND



### SETTLEMENTS

Price Range	New This Month			Year-To-Date		
	2009	2008	% Change	2009	2008	% Change
0 - 149,999	13	8	62.5	66	41	61.0
150,000 - 199,999	3	27	-88.9	38	94	-59.6
200,000 - 299,999	13	21	-38.1	39	124	-68.5
300,000 - 399,999	0	1	-100.0	0	5	-100.0
400,000 - 499,999	0	0	0.0	0	2	-100.0
500,000 - 599,999	0	0	0.0	0	0	0.0
600,000 - 699,999	0	0	0.0	0	0	0.0
700,000 - 799,999	0	0	0.0	0	0	0.0
800,000 - 899,999	0	0	0.0	0	0	0.0
900,000 - 999,999	0	0	0.0	0	0	0.0
1,000,000 - 1,249,999	0	0	0.0	0	0	0.0
1,250,000 - 1,499,999	0	0	0.0	0	0	0.0
1,500,000 +	0	0	0.0	0	0	0.0
<b>TOTALS</b>	<b>29</b>	<b>57</b>	<b>-49.1</b>	<b>143</b>	<b>266</b>	<b>-46.2</b>

### MARKET BY PRICE RANGE



### AVERAGE & MEDIAN PRICE



DATA SOURCE: Metropolitan Regional Information Systems, Inc. (MRIS)

NOTES: Properties not listed through this Multiple Listing Service are not reflected. The term "sales" represents ratified purchase contracts. Current year information is preliminary and subject to revision. Current year-to-date contract information may not equal the sum of the monthly contract totals reported in