

# PRINCE GEORGES COUNTY

## Residential Market Report

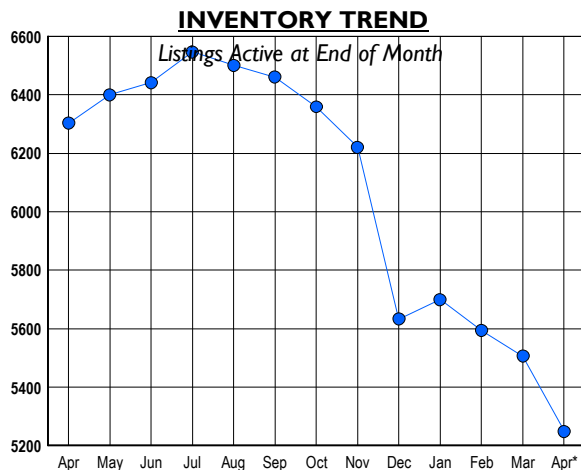
# HOUSING REPORT

## Single Family Homes

### April 2009

### LISTINGS

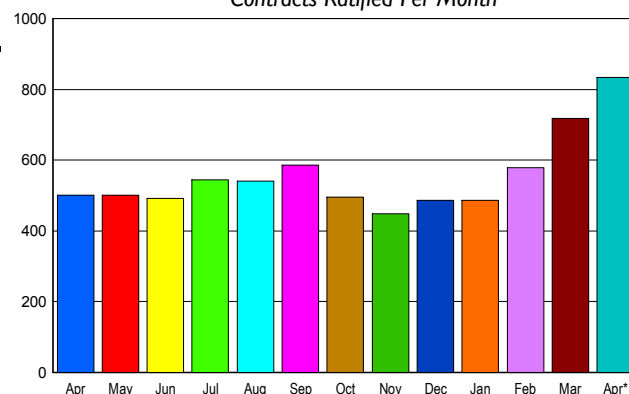
Prices Range	New This Month			Total Actives		
	2009	2008	% Change	2009	2008	% Change
0 - 149,999	141	13	984.6	595	63	844.4
150,000 - 199,999	233	68	242.6	883	249	254.6
200,000 - 299,999	465	496	-6.3	1,869	1,835	1.9
300,000 - 399,999	227	600	-62.2	1,036	2,267	-54.3
400,000 - 499,999	95	193	-50.8	421	851	-50.5
500,000 - 599,999	33	115	-71.3	182	483	-62.3
600,000 - 699,999	12	53	-77.4	103	279	-63.1
700,000 - 799,999	10	17	-41.2	52	122	-57.4
800,000 - 899,999	1	7	-85.7	37	54	-31.5
900,000 - 999,999	0	6	-100.0	17	41	-58.5
1,000,000 - 1,249,999	0	5	-100.0	10	22	-54.5
1,250,000 - 1,499,999	1	2	-50.0	6	11	-45.5
1,500,000 +	1	6	-83.3	37	26	42.3
<b>TOTALS</b>	<b>1219</b>	<b>1581</b>	<b>-22.9</b>	<b>5248</b>	<b>6303</b>	<b>-16.7</b>



### CONTRACTS

Price Range	New This Month			Year-To-Date		
	2009	2008	% Change	2009	2008	% Change
0 - 149,999	164	9	1,722.2	399	31	1,187.1
150,000 - 199,999	196	30	553.3	472	90	424.4
200,000 - 299,999	290	218	33.0	858	613	40.0
300,000 - 399,999	119	173	-31.2	356	493	-27.8
400,000 - 499,999	48	42	14.3	159	145	9.7
500,000 - 599,999	10	21	-52.4	44	78	-43.6
600,000 - 699,999	4	5	-20.0	10	20	-50.0
700,000 - 799,999	3	1	200.0	9	3	200.0
800,000 - 899,999	0	0	0.0	5	4	25.0
900,000 - 999,999	1	1	0.0	2	1	100.0
1,000,000 - 1,249,999	0	2	-100.0	0	3	-100.0
1,250,000 - 1,499,999	0	0	0.0	1	0	100.0
1,500,000 +	0	0	0.0	0	0	0.0
<b>TOTALS</b>	<b>835</b>	<b>502</b>	<b>66.3</b>	<b>2315</b>	<b>1481</b>	<b>56.3</b>

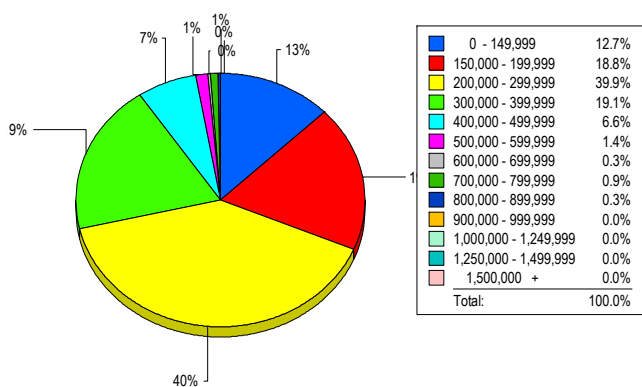
**SALES TREND**  
Contracts Ratified Per Month



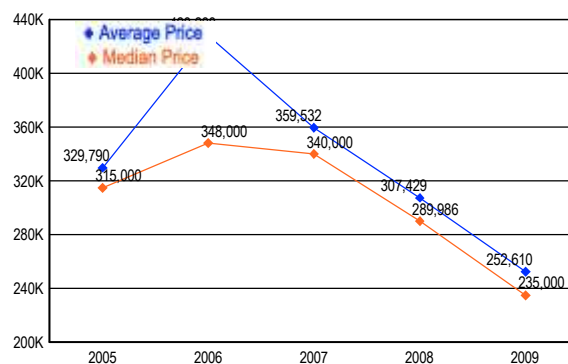
### SETTLEMENTS

Price Range	New This Month			Year-to-Date		
	2009	2008	% Change	2009	2008	% Change
0 - 149,999	44	7	528.6	193	20	865.0
150,000 - 199,999	65	17	282.4	223	55	305.5
200,000 - 299,999	138	94	46.8	545	379	43.8
300,000 - 399,999	66	102	-35.3	231	387	-40.3
400,000 - 499,999	23	29	-20.7	103	98	5.1
500,000 - 599,999	5	7	-28.6	18	52	-65.4
600,000 - 699,999	1	4	-75.0	5	14	-64.3
700,000 - 799,999	3	1	200.0	9	3	200.0
800,000 - 899,999	1	2	-50.0	1	5	-80.0
900,000 - 999,999	0	1	-100.0	0	3	-100.0
1,000,000 - 1,249,999	0	1	-100.0	0	2	-100.0
1,250,000 - 1,499,999	0	0	0.0	0	0	0.0
1,500,000 +	0	0	0.0	0	0	0.0
<b>TOTALS</b>	<b>346</b>	<b>265</b>	<b>30.6</b>	<b>1328</b>	<b>1018</b>	<b>30.5</b>

**MARKET BY PRICE RANGE**



**AVERAGE & MEDIAN PRICE**



DATA SOURCE: Metropolitan Regional Information Systems, Inc. (MRIS)

NOTES: Properties not listed through this Multiple Listing Service are not reflected. The term "sales" represents ratified purchase contracts. Current year information is preliminary and subject to revision. Current year-to-date contract information may not equal the sum of the monthly contract totals reported in