

PRINCE GEORGES COUNTY

Residential Market Report

HOUSING REPORT

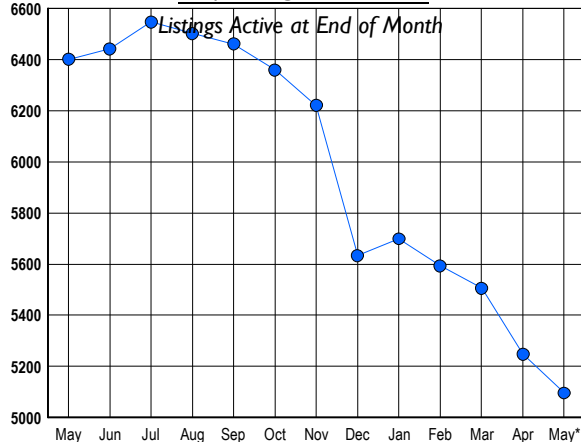
Single Family Homes

May 2009

LISTINGS

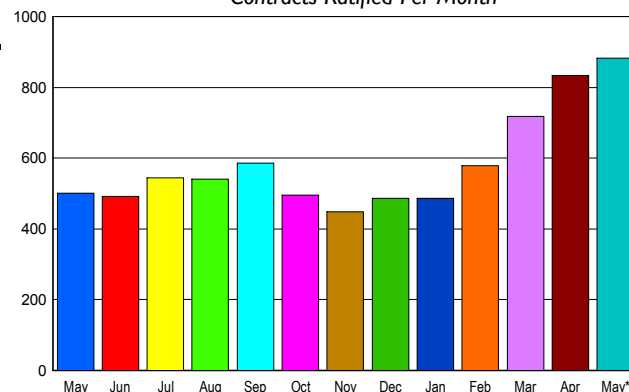
Prices Range	New This Month			Total Actives		
	2009	2008	% Change	2009	2008	% Change
0 - 149,999	182	19	857.9	675	85	694.1
150,000 - 199,999	227	77	194.8	858	298	187.9
200,000 - 299,999	440	488	-9.8	1,751	1,954	-10.4
300,000 - 399,999	231	490	-52.9	990	2,199	-55.0
400,000 - 499,999	83	209	-60.3	408	874	-53.3
500,000 - 599,999	33	95	-65.3	170	476	-64.3
600,000 - 699,999	20	34	-41.2	100	241	-58.5
700,000 - 799,999	7	18	-61.1	50	112	-55.4
800,000 - 899,999	6	13	-53.8	30	57	-47.4
900,000 - 999,999	2	6	-66.7	11	36	-69.4
1,000,000 - 1,249,999	4	5	-20.0	13	24	-45.8
1,250,000 - 1,499,999	0	4	-100.0	5	14	-64.3
1,500,000 +	5	6	-16.7	35	30	16.7
TOTALS	1240	1464	-15.3	5096	6400	-20.4

INVENTORY TREND



SALES TREND

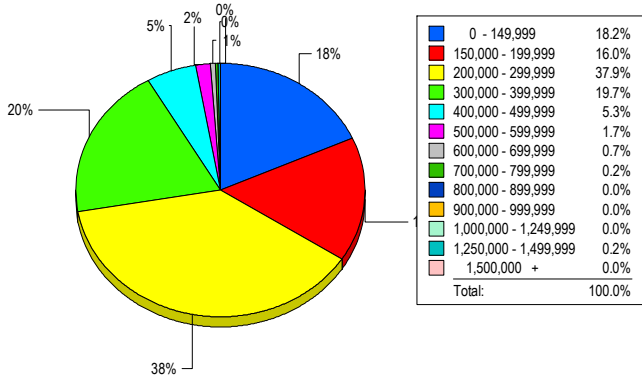
Contracts Ratified Per Month



CONTRACTS

Price Range	New This Month			Year-To-Date		
	2009	2008	% Change	2009	2008	% Change
0 - 149,999	153	8	1,812.5	519	40	1,197.5
150,000 - 199,999	194	50	288.0	618	135	357.8
200,000 - 299,999	334	221	51.1	1,138	788	44.4
300,000 - 399,999	129	138	-6.5	470	612	-23.2
400,000 - 499,999	42	54	-22.2	196	188	4.3
500,000 - 599,999	19	21	-9.5	63	96	-34.4
600,000 - 699,999	5	4	25.0	13	24	-45.8
700,000 - 799,999	2	2	0.0	11	6	83.3
800,000 - 899,999	3	2	50.0	8	6	33.3
900,000 - 999,999	2	0	200.0	4	1	300.0
1,000,000 - 1,249,999	0	0	0.0	0	3	-100.0
1,250,000 - 1,499,999	0	1	-100.0	2	1	100.0
1,500,000 +	1	0	100.0	1	0	100.0
TOTALS	884	501	76.4	3043	1900	60.2

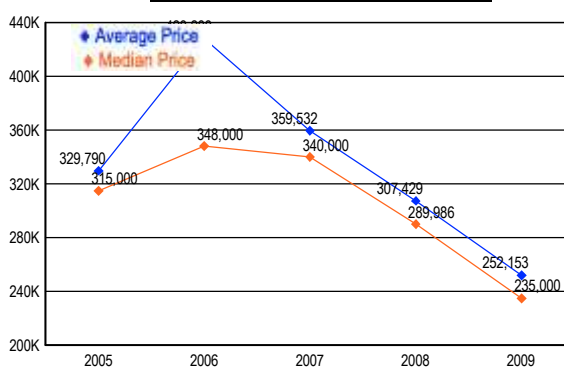
MARKET BY PRICE RANGE



SETTLEMENTS

Price Range	New This Month			Year-to-Date		
	2009	2008	% Change	2009	2008	% Change
0 - 149,999	75	7	971.4	287	30	856.7
150,000 - 199,999	66	16	312.5	310	73	324.7
200,000 - 299,999	156	115	35.7	733	517	41.8
300,000 - 399,999	81	109	-25.7	326	519	-37.2
400,000 - 499,999	22	32	-31.3	141	136	3.7
500,000 - 599,999	7	12	-41.7	27	67	-59.7
600,000 - 699,999	3	4	-25.0	9	18	-50.0
700,000 - 799,999	1	1	0.0	11	7	57.1
800,000 - 899,999	0	0	0.0	3	5	-40.0
900,000 - 999,999	0	0	0.0	0	3	-100.0
1,000,000 - 1,249,999	0	0	0.0	0	2	-100.0
1,250,000 - 1,499,999	1	1	0.0	1	1	0.0
1,500,000 +	0	0	0.0	0	0	0.0
TOTALS	412	297	38.7	1848	1378	34.1

AVERAGE & MEDIAN PRICE



DATA SOURCE: Metropolitan Regional Information Systems, Inc. (MRIS)

NOTES: Properties not listed through this Multiple Listing Service are not reflected. The term "sales" represents ratified purchase contracts. Current year information is preliminary and subject to revision. Current year-to-date contract information may not equal the sum of the monthly contract totals reported in