

PRINCE GEORGES COUNTY

Residential Market Report

HOUSING REPORT

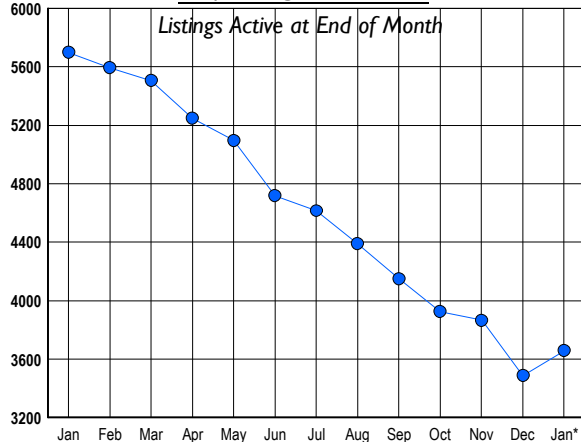
Single Family Homes

January 2010

LISTINGS

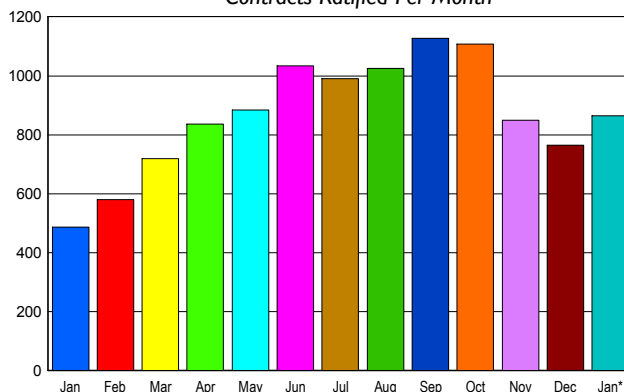
Prices Range	New This Month			Total Actives		
	2010	2009	% Change	2010	2009	% Change
0 - 149,999	252	99	154.5	659	438	50.5
150,000 - 199,999	222	196	13.3	691	849	-18.6
200,000 - 299,999	374	484	-22.7	1,193	2,195	-45.6
300,000 - 399,999	173	220	-21.4	589	1,176	-49.9
400,000 - 499,999	88	96	-8.3	246	501	-50.9
500,000 - 599,999	26	34	-23.5	99	228	-56.6
600,000 - 699,999	12	10	20.0	85	116	-26.7
700,000 - 799,999	5	13	-61.5	31	65	-52.3
800,000 - 899,999	2	9	-77.8	16	52	-69.2
900,000 - 999,999	0	6	-100.0	4	25	-84.0
1,000,000 - 1,249,999	2	0	200.0	13	7	85.7
1,250,000 - 1,499,999	1	2	-50.0	4	8	-50.0
1,500,000 +	0	20	-100.0	29	39	-25.6
TOTALS	1157	1189	-2.7	3659	5699	-35.8

INVENTORY TREND



SALES TREND

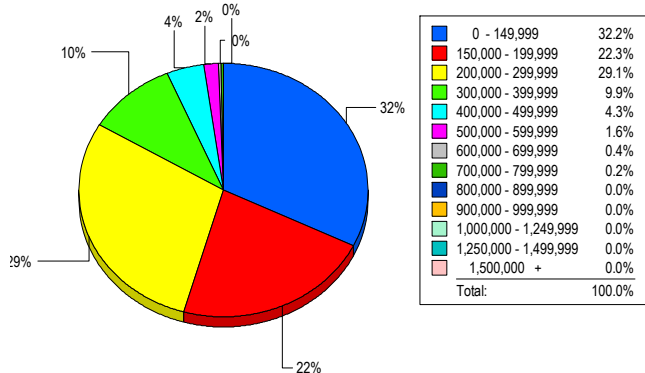
Contracts Ratified Per Month



CONTRACTS

Price Range	New This Month			Year-To-Date		
	2010	2009	% Change	2010	2009	% Change
0 - 149,999	295	73	304.1	295	73	304.1
150,000 - 199,999	196	97	102.1	196	97	102.1
200,000 - 299,999	237	183	29.5	237	183	29.5
300,000 - 399,999	87	78	11.5	87	78	11.5
400,000 - 499,999	37	41	-9.8	37	41	-9.8
500,000 - 599,999	6	10	-40.0	6	10	-40.0
600,000 - 699,999	2	3	-33.3	2	3	-33.3
700,000 - 799,999	3	1	200.0	3	1	200.0
800,000 - 899,999	0	0	0.0	0	0	0.0
900,000 - 999,999	1	0	100.0	1	0	100.0
1,000,000 - 1,249,999	0	0	0.0	0	0	0.0
1,250,000 - 1,499,999	0	0	0.0	0	0	0.0
1,500,000 +	0	0	0.0	0	0	0.0
TOTALS	864	486	77.8	864	486	77.8

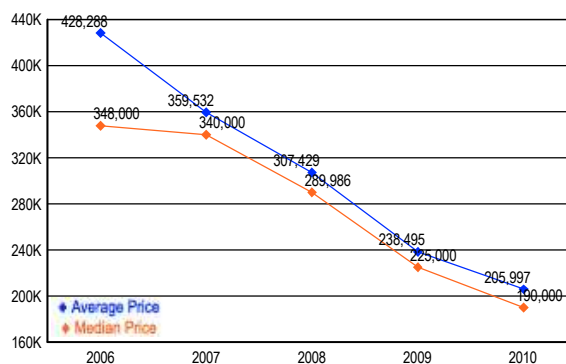
MARKET BY PRICE RANGE



SETTLEMENTS

Price Range	New This Month			Year-to-Date		
	2010	2009	% Change	2010	2009	% Change
0 - 149,999	159	26	511.5	159	26	511.5
150,000 - 199,999	110	39	182.1	110	39	182.1
200,000 - 299,999	144	127	13.4	144	127	13.4
300,000 - 399,999	49	47	4.3	49	47	4.3
400,000 - 499,999	21	21	0.0	21	21	0.0
500,000 - 599,999	8	3	166.7	8	3	166.7
600,000 - 699,999	2	0	200.0	2	0	200.0
700,000 - 799,999	1	2	-50.0	1	2	-50.0
800,000 - 899,999	0	0	0.0	0	0	0.0
900,000 - 999,999	0	0	0.0	0	0	0.0
1,000,000 - 1,249,999	0	0	0.0	0	0	0.0
1,250,000 - 1,499,999	0	0	0.0	0	0	0.0
1,500,000 +	0	0	0.0	0	0	0.0
TOTALS	494	265	86.4	494	265	86.4

AVERAGE & MEDIAN PRICE



DATA SOURCE: Metropolitan Regional Information Systems, Inc. (MRIS)

NOTES: Properties not listed through this Multiple Listing Service are not reflected. The term "sales" represents ratified purchase contracts. Current year information is preliminary and subject to revision. Current year-to-date contract information may not equal the sum of the monthly contract totals reported in