

PRINCE GEORGES COUNTY

Residential Market Report

HOUSING REPORT

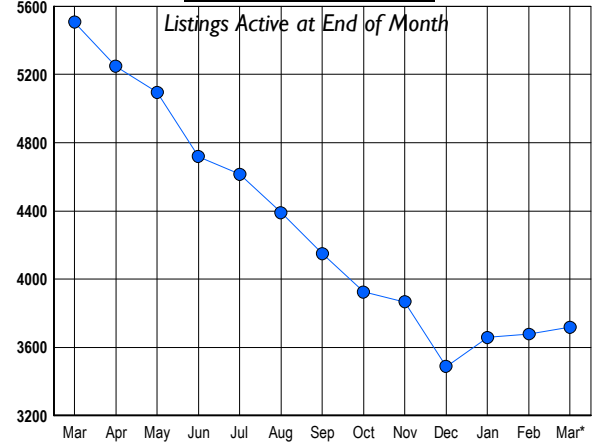
Single Family Homes

March 2010

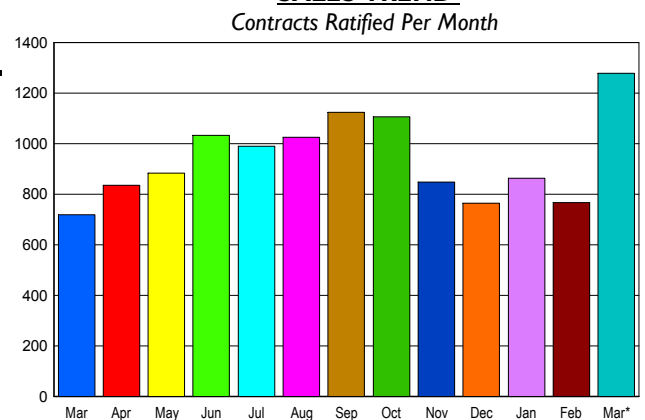
LISTINGS

Prices Range	New This Month			Total Actives		
	2010	2009	% Change	2010	2009	% Change
0 - 149,999	299	149	100.7	635	590	7.6
150,000 - 199,999	328	208	57.7	754	924	-18.4
200,000 - 299,999	491	477	2.9	1,186	1,978	-40.0
300,000 - 399,999	258	228	13.2	608	1,100	-44.7
400,000 - 499,999	101	91	11.0	277	433	-36.0
500,000 - 599,999	32	36	-11.1	108	196	-44.9
600,000 - 699,999	9	20	-55.0	66	114	-42.1
700,000 - 799,999	3	7	-57.1	25	50	-50.0
800,000 - 899,999	5	4	25.0	12	44	-72.7
900,000 - 999,999	2	5	-60.0	7	25	-72.0
1,000,000 - 1,249,999	0	2	-100.0	9	8	12.5
1,250,000 - 1,499,999	1	4	-75.0	3	8	-62.5
1,500,000 +	3	1	200.0	28	36	-22.2
TOTALS	1532	1232	24.4	3718	5506	-32.5

INVENTORY TREND



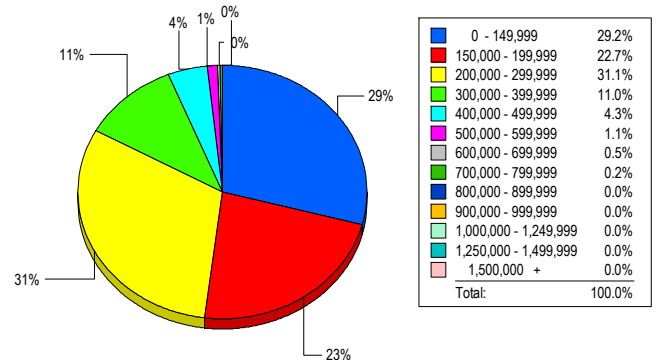
SALES TREND



CONTRACTS

Price Range	New This Month			Year-To-Date		
	2010	2009	% Change	2010	2009	% Change
0 - 149,999	381	135	182.2	842	263	220.2
150,000 - 199,999	293	143	104.9	586	301	94.7
200,000 - 299,999	393	276	42.4	778	624	24.7
300,000 - 399,999	151	109	38.5	307	260	18.1
400,000 - 499,999	47	45	4.4	107	120	-10.8
500,000 - 599,999	4	8	-50.0	19	34	-44.1
600,000 - 699,999	5	0	500.0	9	5	80.0
700,000 - 799,999	4	0	400.0	10	6	66.7
800,000 - 899,999	2	3	-33.3	3	3	0.0
900,000 - 999,999	0	0	0.0	1	0	100.0
1,000,000 - 1,249,999	0	0	0.0	0	0	0.0
1,250,000 - 1,499,999	0	0	0.0	0	1	-100.0
1,500,000 +	0	0	0.0	0	0	0.0
TOTALS	1280	719	78.0	2662	1617	64.6

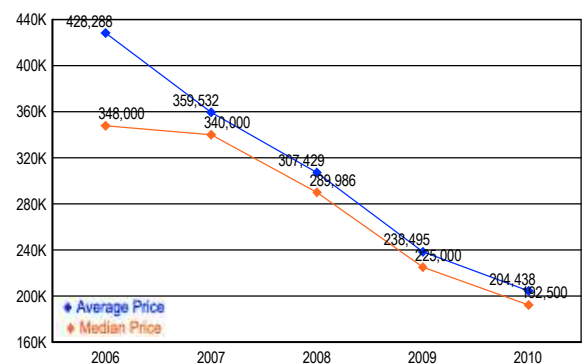
MARKET BY PRICE RANGE



SETTLEMENTS

Price Range	New This Month			Year-to-Date		
	2010	2009	% Change	2010	2009	% Change
0 - 149,999	185	52	255.8	532	133	300.0
150,000 - 199,999	144	51	182.4	355	154	130.5
200,000 - 299,999	197	135	45.9	504	385	30.9
300,000 - 399,999	70	50	40.0	173	156	10.9
400,000 - 499,999	27	24	12.5	69	76	-9.2
500,000 - 599,999	7	7	0.0	19	12	58.3
600,000 - 699,999	3	2	50.0	5	3	66.7
700,000 - 799,999	1	2	-50.0	4	4	0.0
800,000 - 899,999	0	0	0.0	0	0	0.0
900,000 - 999,999	0	0	0.0	0	0	0.0
1,000,000 - 1,249,999	0	0	0.0	0	0	0.0
1,250,000 - 1,499,999	0	0	0.0	0	0	0.0
1,500,000 +	0	0	0.0	0	0	0.0
TOTALS	634	323	96.3	1661	923	80.0

AVERAGE & MEDIAN PRICE



DATA SOURCE: Metropolitan Regional Information Systems, Inc. (MRIS)

NOTES: Properties not listed through this Multiple Listing Service are not reflected. The term "sales" represents ratified purchase contracts. Current year information is preliminary and subject to revision. Current year-to-date contract information may not equal the sum of the monthly contract totals reported in