

PRINCE GEORGES COUNTY

Residential Market Report

HOUSING REPORT

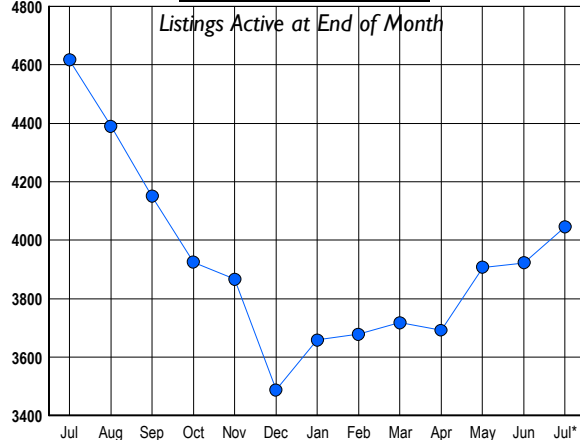
Single Family Homes

July 2010

LISTINGS

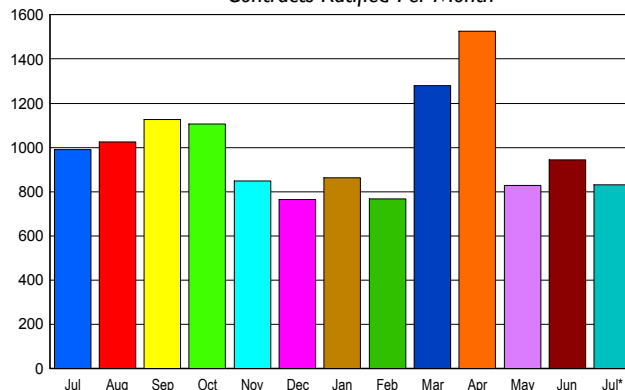
Prices Range	New This Month			Total Actives		
	2010	2009	% Change	2010	2009	% Change
0 - 149,999	287	221	29.9	811	682	18.9
150,000 - 199,999	256	237	8.0	806	821	-1.8
200,000 - 299,999	401	460	-12.8	1,268	1,531	-17.2
300,000 - 399,999	179	195	-8.2	616	859	-28.3
400,000 - 499,999	57	97	-41.2	291	332	-12.3
500,000 - 599,999	20	23	-13.0	100	150	-33.3
600,000 - 699,999	5	17	-70.6	63	102	-38.2
700,000 - 799,999	3	5	-40.0	28	40	-30.0
800,000 - 899,999	2	2	0.0	13	32	-59.4
900,000 - 999,999	1	2	-50.0	6	14	-57.1
1,000,000 - 1,249,999	2	0	200.0	14	13	7.7
1,250,000 - 1,499,999	0	2	-100.0	4	5	-20.0
1,500,000 +	0	1	-100.0	26	35	-25.7
TOTALS	1213	1262	-3.9	4046	4616	-12.3

INVENTORY TREND



SALES TREND

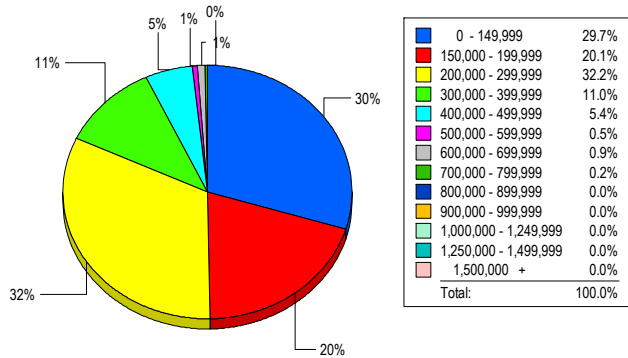
Contracts Ratified Per Month



CONTRACTS

Price Range	New This Month			Year-To-Date		
	2010	2009	% Change	2010	2009	% Change
0 - 149,999	240	224	7.1	1,749	859	103.6
150,000 - 199,999	204	217	-6.0	1,272	967	31.5
200,000 - 299,999	247	314	-21.3	1,694	1,653	2.5
300,000 - 399,999	96	153	-37.3	669	716	-6.6
400,000 - 499,999	27	58	-53.4	242	292	-17.1
500,000 - 599,999	13	14	-7.1	63	79	-20.3
600,000 - 699,999	2	8	-75.0	20	23	-13.0
700,000 - 799,999	0	2	-100.0	13	15	-13.3
800,000 - 899,999	1	0	100.0	4	8	-50.0
900,000 - 999,999	1	0	100.0	2	4	-50.0
1,000,000 - 1,249,999	0	0	0.0	0	1	-100.0
1,250,000 - 1,499,999	0	0	0.0	0	2	-100.0
1,500,000 +	0	0	0.0	0	1	-100.0
TOTALS	831	990	-16.1	5728	4620	24.0

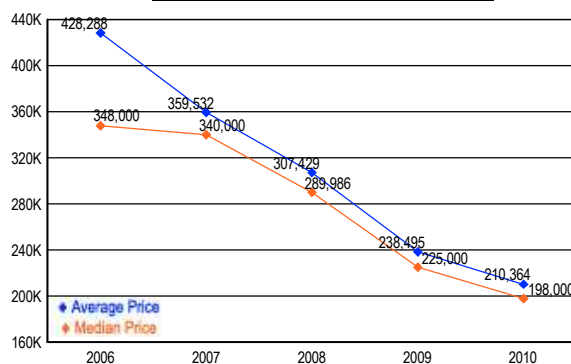
MARKET BY PRICE RANGE



SETTLEMENTS

Price Range	New This Month			Year-to-Date		
	2010	2009	% Change	2010	2009	% Change
0 - 149,999	164	115	42.6	1,424	504	182.5
150,000 - 199,999	111	114	-2.6	1,004	526	90.9
200,000 - 299,999	178	221	-19.5	1,484	1,203	23.4
300,000 - 399,999	61	109	-44.0	553	527	4.9
400,000 - 499,999	30	40	-25.0	202	210	-3.8
500,000 - 599,999	3	6	-50.0	48	40	20.0
600,000 - 699,999	5	4	25.0	19	17	11.8
700,000 - 799,999	1	1	0.0	10	13	-23.1
800,000 - 899,999	0	1	-100.0	1	4	-75.0
900,000 - 999,999	0	0	0.0	1	2	-50.0
1,000,000 - 1,249,999	0	0	0.0	0	2	-100.0
1,250,000 - 1,499,999	0	0	0.0	0	1	-100.0
1,500,000 +	0	0	0.0	0	1	-100.0
TOTALS	553	611	-9.5	4746	3050	55.6

AVERAGE & MEDIAN PRICE



DATA SOURCE: Metropolitan Regional Information Systems, Inc. (MRIS)

NOTES: Properties not listed through this Multiple Listing Service are not reflected. The term "sales" represents ratified purchase contracts. Current year information is preliminary and subject to revision. Current year-to-date contract information may not equal the sum of the monthly contract totals reported in