

# PRINCE GEORGES COUNTY

## Residential Market Report

# HOUSING REPORT

## Single Family Homes

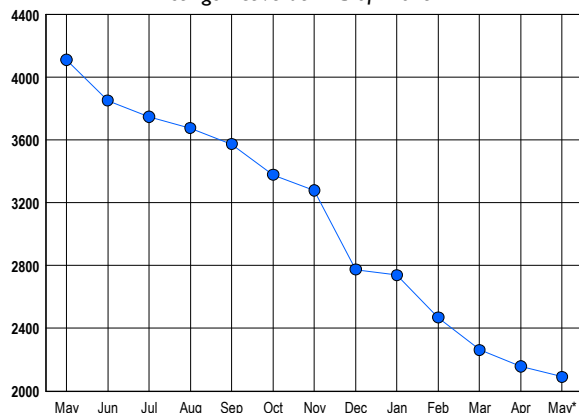
### May 2012

### LISTINGS

Prices Range	New This Month			Total Actives		
	2012	2011	% Change	2012	2011	% Change
0 - 149,999	289	346	-16.5	454	1,234	-63.2
150,000 - 199,999	201	246	-18.3	457	853	-46.4
200,000 - 299,999	270	317	-14.8	542	1,070	-49.3
300,000 - 399,999	127	149	-14.8	312	479	-34.9
400,000 - 499,999	46	55	-16.4	172	250	-31.2
500,000 - 599,999	19	15	26.7	72	107	-32.7
600,000 - 699,999	8	6	33.3	38	46	-17.4
700,000 - 799,999	2	3	-33.3	17	32	-46.9
800,000 - 899,999	2	1	100.0	6	10	-40.0
900,000 - 999,999	1	3	-66.7	8	7	14.3
1,000,000 - 1,249,999	1	1	0.0	3	11	-72.7
1,250,000 - 1,499,999	1	0	100.0	2	6	-66.7
1,500,000 +	0	1	-100.0	7	5	40.0
<b>TOTALS</b>	<b>967</b>	<b>1143</b>	<b>-15.4</b>	<b>2090</b>	<b>4110</b>	<b>-49.1</b>

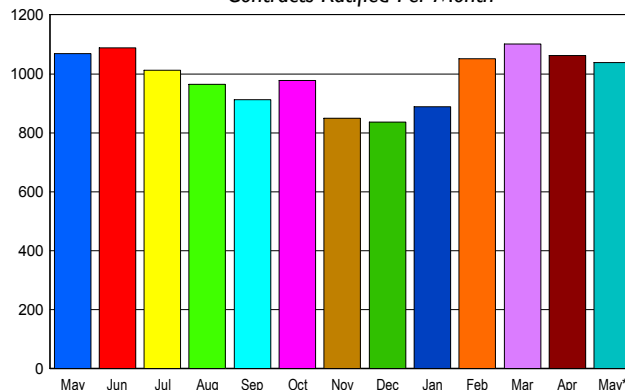
### INVENTORY TREND

Listings Active at End of Month



### SALES TREND

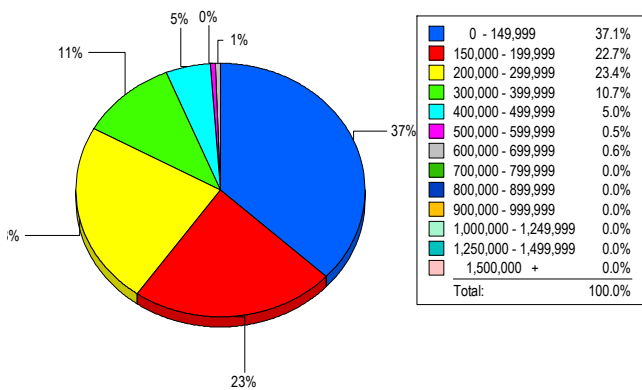
Contracts Ratified Per Month



### CONTRACTS

Price Range	New This Month			Year-To-Date		
	2012	2011	% Change	2012	2011	% Change
0 - 149,999	389	416	-6.5	1,739	1,805	-3.7
150,000 - 199,999	246	230	7.0	1,022	932	9.7
200,000 - 299,999	242	281	-13.9	1,076	1,001	7.5
300,000 - 399,999	109	102	6.9	409	413	-1.0
400,000 - 499,999	32	28	14.3	155	133	16.5
500,000 - 599,999	10	5	100.0	42	35	20.0
600,000 - 699,999	8	3	166.7	18	11	63.6
700,000 - 799,999	0	1	-100.0	4	2	100.0
800,000 - 899,999	1	2	-50.0	4	3	33.3
900,000 - 999,999	0	0	0.0	1	1	0.0
1,000,000 - 1,249,999	0	0	0.0	0	0	0.0
1,250,000 - 1,499,999	0	0	0.0	0	0	0.0
1,500,000 +	0	0	0.0	0	0	0.0
<b>TOTALS</b>	<b>1037</b>	<b>1068</b>	<b>-2.9</b>	<b>4470</b>	<b>4336</b>	<b>3.1</b>

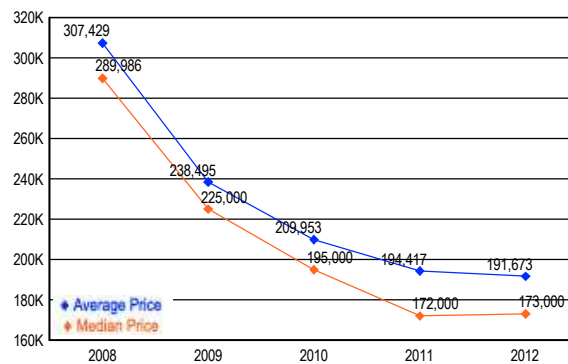
### MARKET BY PRICE RANGE



### SETTLEMENTS

Price Range	New This Month			Year-to-Date		
	2012	2011	% Change	2012	2011	% Change
0 - 149,999	238	257	-7.4	1,116	1,248	-10.6
150,000 - 199,999	146	146	0.0	665	629	5.7
200,000 - 299,999	150	155	-3.2	689	697	-1.1
300,000 - 399,999	69	58	19.0	260	287	-9.4
400,000 - 499,999	32	15	113.3	102	109	-6.4
500,000 - 599,999	3	8	-62.5	26	35	-25.7
600,000 - 699,999	4	2	100.0	13	9	44.4
700,000 - 799,999	0	0	0.0	3	1	200.0
800,000 - 899,999	0	0	0.0	4	0	400.0
900,000 - 999,999	0	0	0.0	1	1	0.0
1,000,000 - 1,249,999	0	0	0.0	0	0	0.0
1,250,000 - 1,499,999	0	0	0.0	0	1	-100.0
1,500,000 +	0	0	0.0	0	0	0.0
<b>TOTALS</b>	<b>642</b>	<b>641</b>	<b>0.2</b>	<b>2879</b>	<b>3017</b>	<b>-4.6</b>

### AVERAGE & MEDIAN PRICE



DATA SOURCE: Metropolitan Regional Information Systems, Inc. (MRIS)

NOTES: Properties not listed through this Multiple Listing Service are not reflected. The term "sales" represents ratified purchase contracts. Current year information is preliminary and subject to revision. Current year- to- date contract information may not equal the sum of the monthly contract totals reported in