

# PRINCE GEORGES COUNTY

## Residential Market Report

# HOUSING REPORT

## Single Family Homes

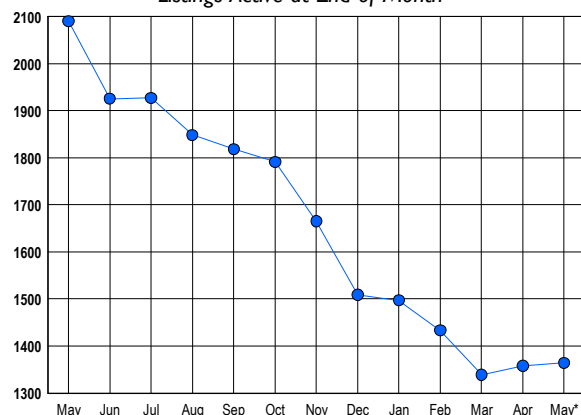
### May 2013

### LISTINGS

Prices Range	New This Month			Total Actives		
	2013	2012	% Change	2013	2012	% Change
0 - 149,999	204	289	-29.4	188	454	-58.6
150,000 - 199,999	186	201	-7.5	200	457	-56.2
200,000 - 299,999	301	270	11.5	377	542	-30.4
300,000 - 399,999	156	127	22.8	276	312	-11.5
400,000 - 499,999	76	46	65.2	179	172	4.1
500,000 - 599,999	14	19	-26.3	55	72	-23.6
600,000 - 699,999	17	8	112.5	43	38	13.2
700,000 - 799,999	2	2	0.0	12	17	-29.4
800,000 - 899,999	2	2	0.0	5	6	-16.7
900,000 - 999,999	3	1	200.0	11	8	37.5
1,000,000 - 1,249,999	2	1	100.0	6	3	100.0
1,250,000 - 1,499,999	4	1	300.0	6	2	200.0
1,500,000 +	1	0	100.0	6	7	-14.3
<b>TOTALS</b>	<b>968</b>	<b>967</b>	<b>0.1</b>	<b>1364</b>	<b>2090</b>	<b>-34.7</b>

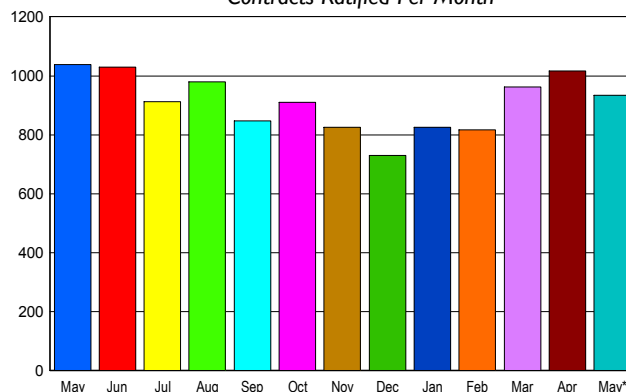
### INVENTORY TREND

Listings Active at End of Month



### SALES TREND

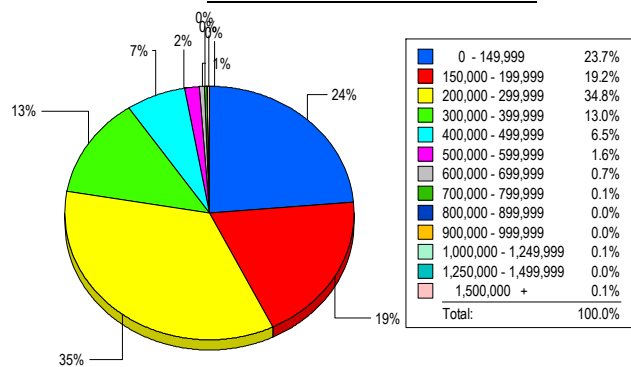
Contracts Ratified Per Month



### CONTRACTS

Price Range	New This Month			Year-To-Date		
	2013	2012	% Change	2013	2012	% Change
0 - 149,999	238	389	-38.8	1,149	1,739	-33.9
150,000 - 199,999	206	246	-16.3	861	1,022	-15.8
200,000 - 299,999	296	242	22.3	1,230	1,076	14.3
300,000 - 399,999	129	109	18.3	514	409	25.7
400,000 - 499,999	43	32	34.4	181	155	16.8
500,000 - 599,999	16	10	60.0	56	42	33.3
600,000 - 699,999	4	8	-50.0	20	18	11.1
700,000 - 799,999	1	0	100.0	9	4	125.0
800,000 - 899,999	1	1	0.0	3	4	-25.0
900,000 - 999,999	0	0	0.0	0	1	-100.0
1,000,000 - 1,249,999	0	0	0.0	1	0	100.0
1,250,000 - 1,499,999	0	0	0.0	0	0	0.0
1,500,000 +	0	0	0.0	0	0	0.0
<b>TOTALS</b>	<b>934</b>	<b>1037</b>	<b>-9.9</b>	<b>4024</b>	<b>4470</b>	<b>-10.0</b>

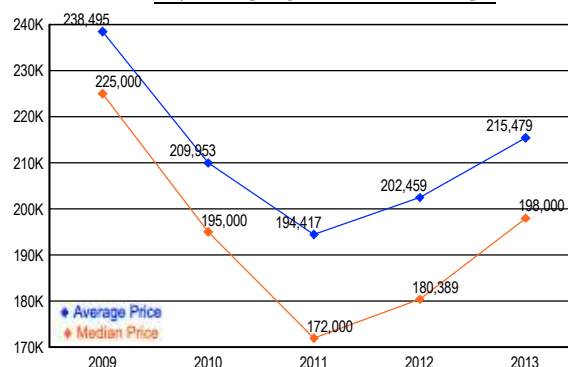
### MARKET BY PRICE RANGE



### SETTLEMENTS

Price Range	New This Month			Year-to-Date		
	2013	2012	% Change	2013	2012	% Change
0 - 149,999	160	238	-32.8	869	1,116	-22.1
150,000 - 199,999	130	146	-11.0	648	665	-2.6
200,000 - 299,999	235	150	56.7	919	689	33.4
300,000 - 399,999	88	69	27.5	360	260	38.5
400,000 - 499,999	44	32	37.5	126	102	23.5
500,000 - 599,999	11	3	266.7	28	26	7.7
600,000 - 699,999	5	4	25.0	14	13	7.7
700,000 - 799,999	1	0	100.0	5	3	66.7
800,000 - 899,999	0	0	0.0	4	4	0.0
900,000 - 999,999	0	0	0.0	0	1	-100.0
1,000,000 - 1,249,999	1	0	100.0	1	0	100.0
1,250,000 - 1,499,999	0	0	0.0	0	0	0.0
1,500,000 +	1	0	100.0	1	0	100.0
<b>TOTALS</b>	<b>676</b>	<b>642</b>	<b>5.3</b>	<b>2975</b>	<b>2879</b>	<b>3.3</b>

### AVERAGE & MEDIAN PRICE



DATA SOURCE: Metropolitan Regional Information Systems, Inc. (MRIS)

NOTES: Properties not listed through this Multiple Listing Service are not reflected. The term "sales" represents ratified purchase contracts. Current year information is preliminary and subject to revision. Current year-to-date contract information may not equal the sum of the monthly contract totals reported in