

# PRINCE GEORGES COUNTY

## Residential Market Report

# HOUSING REPORT

## Single Family Homes

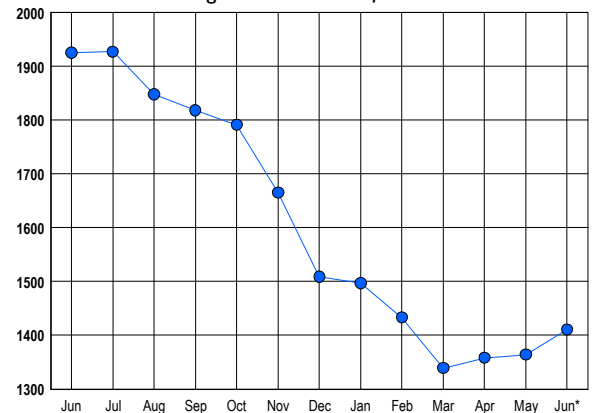
June 2013

### LISTINGS

Prices Range	New This Month			Total Actives		
	2013	2012	% Change	2013	2012	% Change
0 - 149,999	163	234	-30.3	159	400	-60.3
150,000 - 199,999	160	219	-26.9	211	452	-53.3
200,000 - 299,999	325	244	33.2	419	517	-19.0
300,000 - 399,999	137	107	28.0	279	278	0.4
400,000 - 499,999	65	46	41.3	175	143	22.4
500,000 - 599,999	23	11	109.1	70	60	16.7
600,000 - 699,999	7	4	75.0	47	32	46.9
700,000 - 799,999	4	2	100.0	20	13	53.8
800,000 - 899,999	3	1	200.0	7	6	16.7
900,000 - 999,999	0	2	-100.0	8	9	-11.1
1,000,000 - 1,249,999	0	0	0.0	7	3	133.3
1,250,000 - 1,499,999	0	1	-100.0	4	4	0.0
1,500,000 +	0	0	0.0	5	8	-37.5
<b>TOTALS</b>	<b>887</b>	<b>871</b>	<b>1.8</b>	<b>1411</b>	<b>1925</b>	<b>-26.7</b>

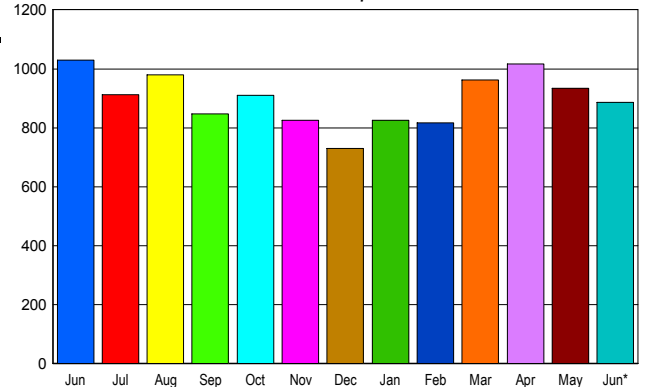
### INVENTORY TREND

Listings Active at End of Month



### SALES TREND

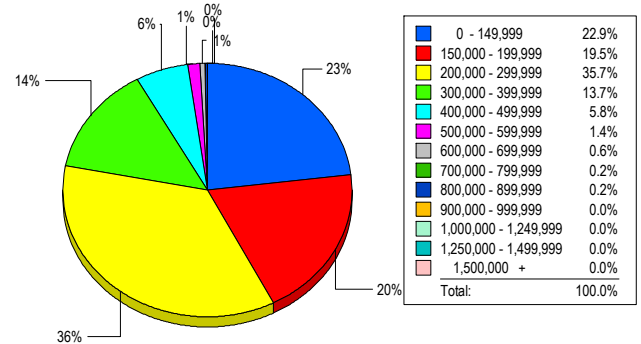
Contracts Ratified Per Month



### CONTRACTS

Price Range	New This Month			Year-To-Date		
	2013	2012	% Change	2013	2012	% Change
0 - 149,999	202	338	-40.2	1,279	1,962	-34.8
150,000 - 199,999	214	259	-17.4	1,007	1,204	-16.4
200,000 - 299,999	278	260	6.9	1,436	1,272	12.9
300,000 - 399,999	124	116	6.9	610	501	21.8
400,000 - 499,999	56	42	33.3	235	194	21.1
500,000 - 599,999	8	9	-11.1	61	50	22.0
600,000 - 699,999	1	3	-66.7	19	18	5.6
700,000 - 799,999	0	2	-100.0	8	6	33.3
800,000 - 899,999	0	1	-100.0	3	4	-25.0
900,000 - 999,999	2	0	200.0	2	1	100.0
1,000,000 - 1,249,999	0	0	0.0	1	0	100.0
1,250,000 - 1,499,999	0	0	0.0	0	0	0.0
1,500,000 +	0	0	0.0	0	0	0.0
<b>TOTALS</b>	<b>885</b>	<b>1030</b>	<b>-14.1</b>	<b>4661</b>	<b>5212</b>	<b>-10.6</b>

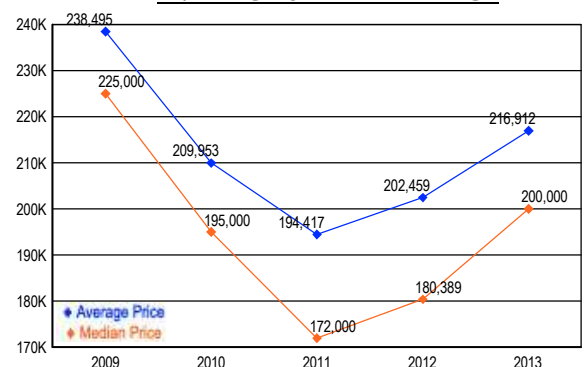
### MARKET BY PRICE RANGE



### SETTLEMENTS

Price Range	New This Month			Year-to-Date		
	2013	2012	% Change	2013	2012	% Change
0 - 149,999	147	205	-28.3	1,028	1,339	-23.2
150,000 - 199,999	125	142	-12.0	777	818	-5.0
200,000 - 299,999	229	180	27.2	1,161	872	33.1
300,000 - 399,999	88	66	33.3	453	334	35.6
400,000 - 499,999	37	34	8.8	165	140	17.9
500,000 - 599,999	9	4	125.0	37	31	19.4
600,000 - 699,999	4	3	33.3	18	16	12.5
700,000 - 799,999	1	2	-50.0	6	5	20.0
800,000 - 899,999	1	0	100.0	5	4	25.0
900,000 - 999,999	0	0	0.0	0	1	-100.0
1,000,000 - 1,249,999	0	0	0.0	1	0	100.0
1,250,000 - 1,499,999	0	0	0.0	0	0	0.0
1,500,000 +	0	0	0.0	0	0	0.0
<b>TOTALS</b>	<b>641</b>	<b>636</b>	<b>0.8</b>	<b>3651</b>	<b>3560</b>	<b>2.6</b>

### AVERAGE & MEDIAN PRICE



DATA SOURCE: Metropolitan Regional Information Systems, Inc. (MRIS)

NOTES: Properties not listed through this Multiple Listing Service are not reflected. The term "sales" represents ratified purchase contracts. Current year information is preliminary and subject to revision. Current year-to-date contract information may not equal the sum of the monthly contract totals reported in