

# PRINCE GEORGES COUNTY

## Residential Market Report

# HOUSING REPORT

## Single Family Homes

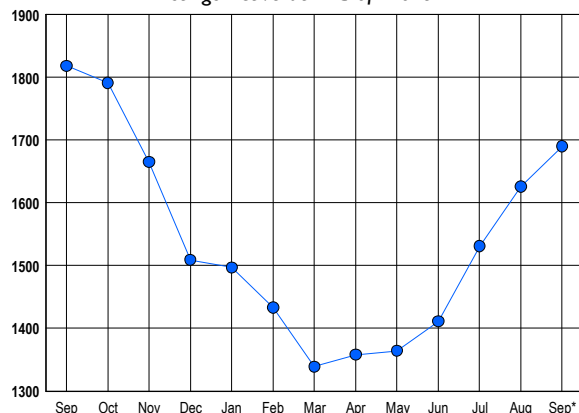
### September 2013

### LISTINGS

Prices Range	New This Month			Total Actives		
	2013	2012	% Change	2013	2012	% Change
0 - 149,999	142	213	-33.3	162	367	-55.9
150,000 - 199,999	158	156	1.3	272	375	-27.5
200,000 - 299,999	304	231	31.6	559	503	11.1
300,000 - 399,999	124	114	8.8	318	294	8.2
400,000 - 499,999	61	38	60.5	205	145	41.4
500,000 - 599,999	23	23	0.0	80	62	29.0
600,000 - 699,999	6	6	0.0	43	25	72.0
700,000 - 799,999	2	6	-66.7	17	13	30.8
800,000 - 899,999	2	5	-60.0	9	9	0.0
900,000 - 999,999	2	4	-50.0	8	10	-20.0
1,000,000 - 1,249,999	0	1	-100.0	8	5	60.0
1,250,000 - 1,499,999	0	0	0.0	5	2	150.0
1,500,000 +	0	3	-100.0	4	8	-50.0
<b>TOTALS</b>	<b>824</b>	<b>800</b>	<b>3.0</b>	<b>1690</b>	<b>1818</b>	<b>-7.0</b>

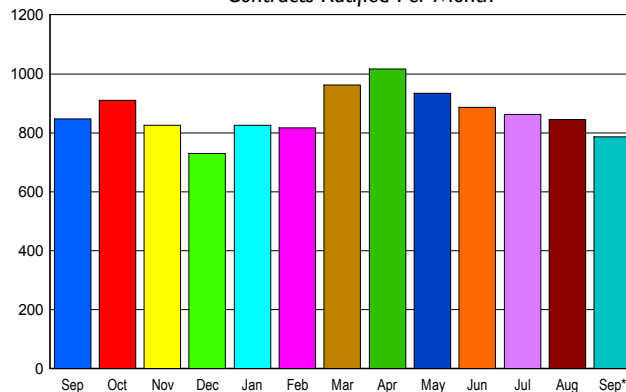
### INVENTORY TREND

Listings Active at End of Month



### SALES TREND

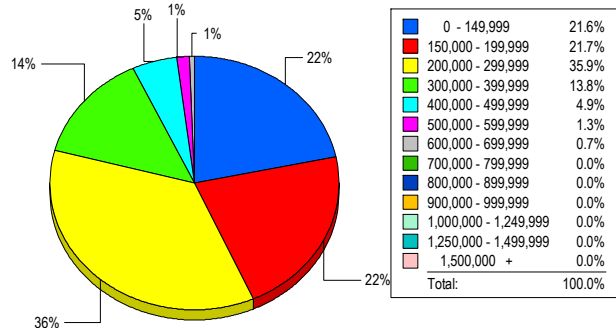
Contracts Ratified Per Month



### CONTRACTS

Price Range	New This Month			Year-To-Date		
	2013	2012	% Change	2013	2012	% Change
0 - 149,999	184	290	-36.6	1,610	2,535	-36.5
150,000 - 199,999	170	193	-11.9	1,345	1,611	-16.5
200,000 - 299,999	267	249	7.2	2,066	1,790	15.4
300,000 - 399,999	106	74	43.2	876	691	26.8
400,000 - 499,999	44	23	91.3	338	249	35.7
500,000 - 599,999	9	4	125.0	96	59	62.7
600,000 - 699,999	5	5	0.0	31	33	-6.1
700,000 - 799,999	1	4	-75.0	14	13	7.7
800,000 - 899,999	1	3	-66.7	7	7	0.0
900,000 - 999,999	0	0	0.0	2	2	0.0
1,000,000 - 1,249,999	0	0	0.0	2	1	100.0
1,250,000 - 1,499,999	0	1	-100.0	0	1	-100.0
1,500,000 +	0	0	0.0	0	0	0.0
<b>TOTALS</b>	<b>787</b>	<b>846</b>	<b>-7.0</b>	<b>6387</b>	<b>6992</b>	<b>-8.7</b>

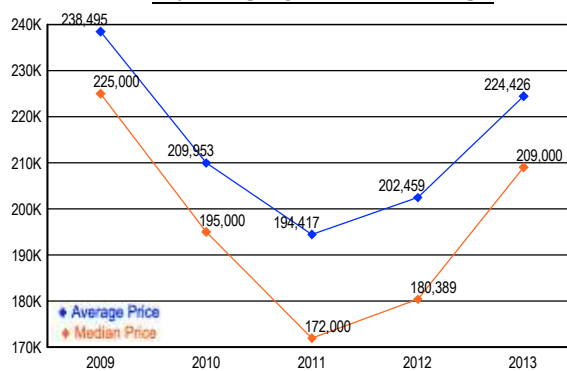
### MARKET BY PRICE RANGE



### SETTLEMENTS

Price Range	New This Month			Year-to-Date		
	2013	2012	% Change	2013	2012	% Change
0 - 149,999	131	194	-32.5	1,436	2,025	-29.1
150,000 - 199,999	132	124	6.5	1,181	1,250	-5.5
200,000 - 299,999	218	149	46.3	1,833	1,426	28.5
300,000 - 399,999	84	54	55.6	773	538	43.7
400,000 - 499,999	30	12	150.0	285	212	34.4
500,000 - 599,999	8	5	60.0	70	51	37.3
600,000 - 699,999	4	5	-20.0	33	31	6.5
700,000 - 799,999	0	1	-100.0	9	8	12.5
800,000 - 899,999	0	0	0.0	7	6	16.7
900,000 - 999,999	0	0	0.0	0	2	-100.0
1,000,000 - 1,249,999	0	0	0.0	2	0	200.0
1,250,000 - 1,499,999	0	0	0.0	0	0	0.0
1,500,000 +	0	0	0.0	0	0	0.0
<b>TOTALS</b>	<b>607</b>	<b>544</b>	<b>11.6</b>	<b>5629</b>	<b>5549</b>	<b>1.4</b>

### AVERAGE & MEDIAN PRICE



DATA SOURCE: Metropolitan Regional Information Systems, Inc. (MRIS)

NOTES: Properties not listed through this Multiple Listing Service are not reflected. The term "sales" represents ratified purchase contracts. Current year information is preliminary and subject to revision. Current year-to-date contract information may not equal the sum of the monthly contract totals reported in