

# PRINCE GEORGES COUNTY

## Residential Market Report

# HOUSING REPORT

## Single Family Homes

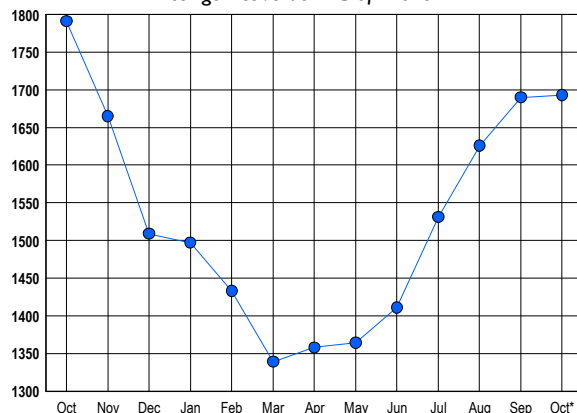
### October 2013

### LISTINGS

Prices Range	New This Month			Total Actives		
	2013	2012	% Change	2013	2012	% Change
0 - 149,999	151	249	-39.4	170	367	-53.7
150,000 - 199,999	195	183	6.6	251	361	-30.5
200,000 - 299,999	307	253	21.3	562	484	16.1
300,000 - 399,999	154	105	46.7	337	278	21.2
400,000 - 499,999	60	38	57.9	198	154	28.6
500,000 - 599,999	24	24	0.0	84	72	16.7
600,000 - 699,999	12	4	200.0	44	31	41.9
700,000 - 799,999	4	3	33.3	16	13	23.1
800,000 - 899,999	2	0	200.0	10	8	25.0
900,000 - 999,999	0	0	0.0	6	10	-40.0
1,000,000 - 1,249,999	0	0	0.0	7	5	40.0
1,250,000 - 1,499,999	0	0	0.0	4	1	300.0
1,500,000 +	1	1	0.0	4	7	-42.9
<b>TOTALS</b>	<b>910</b>	<b>860</b>	<b>5.8</b>	<b>1693</b>	<b>1791</b>	<b>-5.5</b>

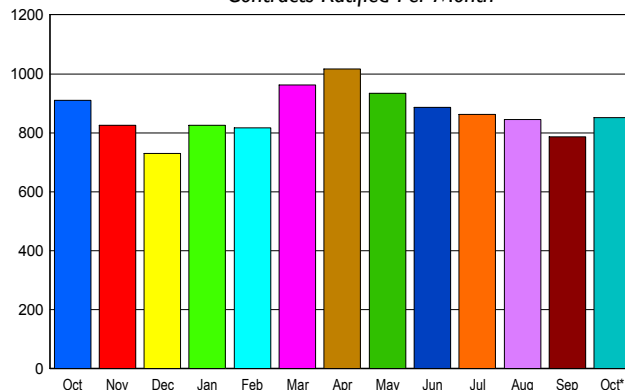
### INVENTORY TREND

Listings Active at End of Month



### SALES TREND

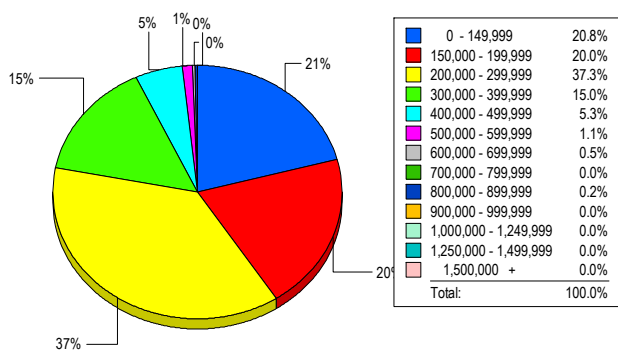
Contracts Ratified Per Month



### CONTRACTS

Price Range	New This Month			Year-To-Date		
	2013	2012	% Change	2013	2012	% Change
0 - 149,999	179	313	-42.8	1,726	2,733	-36.8
150,000 - 199,999	213	208	2.4	1,502	1,728	-13.1
200,000 - 299,999	283	272	4.0	2,289	1,992	14.9
300,000 - 399,999	112	81	38.3	965	748	29.0
400,000 - 499,999	44	24	83.3	381	263	44.9
500,000 - 599,999	12	8	50.0	108	64	68.8
600,000 - 699,999	8	1	700.0	36	32	12.5
700,000 - 799,999	0	2	-100.0	16	15	6.7
800,000 - 899,999	0	0	0.0	8	8	0.0
900,000 - 999,999	1	0	100.0	3	2	50.0
1,000,000 - 1,249,999	0	0	0.0	2	1	100.0
1,250,000 - 1,499,999	0	0	0.0	0	0	0.0
1,500,000 +	0	0	0.0	0	0	0.0
<b>TOTALS</b>	<b>852</b>	<b>909</b>	<b>-6.3</b>	<b>7036</b>	<b>7586</b>	<b>-7.3</b>

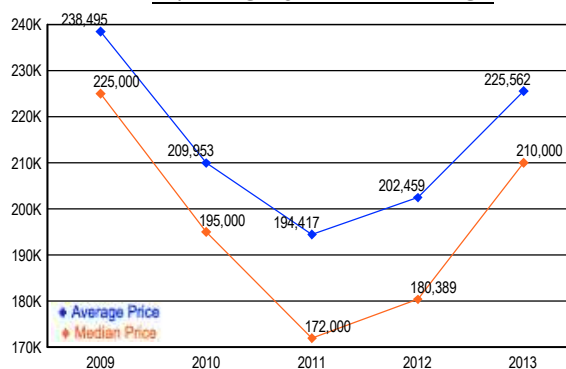
### MARKET BY PRICE RANGE



### SETTLEMENTS

Price Range	New This Month			Year-to-Date		
	2013	2012	% Change	2013	2012	% Change
0 - 149,999	137	167	-18.0	1,578	2,200	-28.3
150,000 - 199,999	132	116	13.8	1,317	1,375	-4.2
200,000 - 299,999	246	175	40.6	2,085	1,615	29.1
300,000 - 399,999	99	58	70.7	876	597	46.7
400,000 - 499,999	35	24	45.8	324	239	35.6
500,000 - 599,999	7	2	250.0	77	53	45.3
600,000 - 699,999	3	1	200.0	37	32	15.6
700,000 - 799,999	0	1	-100.0	10	10	0.0
800,000 - 899,999	1	1	0.0	8	7	14.3
900,000 - 999,999	0	1	-100.0	0	3	-100.0
1,000,000 - 1,249,999	0	0	0.0	2	0	200.0
1,250,000 - 1,499,999	0	0	0.0	0	0	0.0
1,500,000 +	0	0	0.0	0	0	0.0
<b>TOTALS</b>	<b>660</b>	<b>546</b>	<b>20.9</b>	<b>6314</b>	<b>6131</b>	<b>3.0</b>

### AVERAGE & MEDIAN PRICE



DATA SOURCE: Metropolitan Regional Information Systems, Inc. (MRIS)

NOTES: Properties not listed through this Multiple Listing Service are not reflected. The term "sales" represents ratified purchase contracts. Current year information is preliminary and subject to revision. Current year-to-date contract information may not equal the sum of the monthly contract totals reported in