

PRINCE GEORGES COUNTY

Residential Market Report

HOUSING REPORT

Single Family Homes

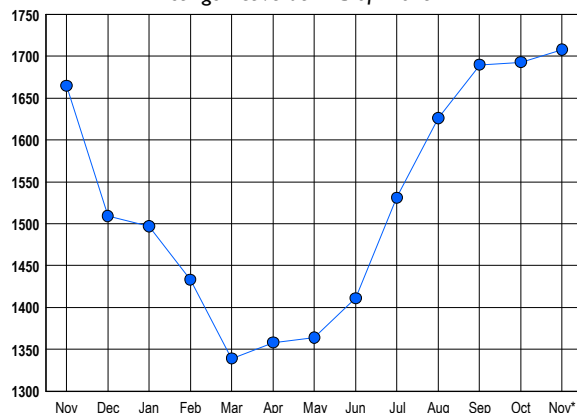
November 2013

LISTINGS

| Prices Range | New This Month | | | Total Actives | | |
|-----------------------|----------------|------------|-------------|---------------|-------------|------------|
| | 2013 | 2012 | % Change | 2013 | 2012 | % Change |
| 0 - 149,999 | 140 | 185 | -24.3 | 190 | 326 | -41.7 |
| 150,000 - 199,999 | 161 | 139 | 15.8 | 272 | 334 | -18.6 |
| 200,000 - 299,999 | 275 | 198 | 38.9 | 542 | 457 | 18.6 |
| 300,000 - 399,999 | 124 | 74 | 67.6 | 337 | 269 | 25.3 |
| 400,000 - 499,999 | 53 | 31 | 71.0 | 193 | 149 | 29.5 |
| 500,000 - 599,999 | 22 | 12 | 83.3 | 88 | 58 | 51.7 |
| 600,000 - 699,999 | 5 | 5 | 0.0 | 41 | 37 | 10.8 |
| 700,000 - 799,999 | 2 | 1 | 100.0 | 17 | 9 | 88.9 |
| 800,000 - 899,999 | 0 | 2 | -100.0 | 10 | 9 | 11.1 |
| 900,000 - 999,999 | 0 | 0 | 0.0 | 7 | 6 | 16.7 |
| 1,000,000 - 1,249,999 | 1 | 0 | 100.0 | 5 | 4 | 25.0 |
| 1,250,000 - 1,499,999 | 0 | 0 | 0.0 | 2 | 1 | 100.0 |
| 1,500,000 + | 1 | 0 | 100.0 | 4 | 6 | -33.3 |
| TOTALS | 784 | 647 | 21.2 | 1708 | 1665 | 2.6 |

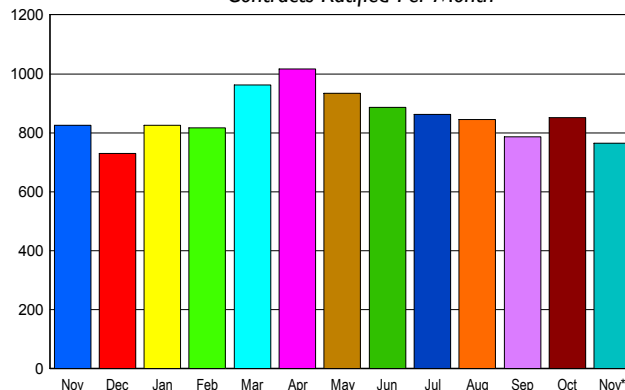
INVENTORY TREND

Listings Active at End of Month



SALES TREND

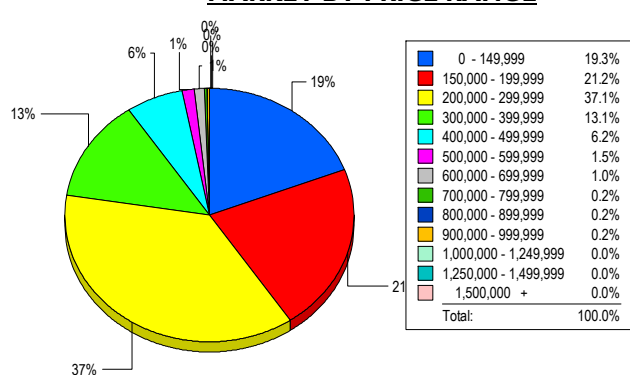
Contracts Ratified Per Month



CONTRACTS

| Price Range | New This Month | | | Year-To-Date | | |
|-----------------------|----------------|------------|-------------|--------------|-------------|-------------|
| | 2013 | 2012 | % Change | 2013 | 2012 | % Change |
| 0 - 149,999 | 158 | 279 | -43.4 | 1,812 | 2,891 | -37.3 |
| 150,000 - 199,999 | 178 | 196 | -9.2 | 1,602 | 1,840 | -12.9 |
| 200,000 - 299,999 | 274 | 226 | 21.2 | 2,502 | 2,140 | 16.9 |
| 300,000 - 399,999 | 101 | 82 | 23.2 | 1,037 | 813 | 27.6 |
| 400,000 - 499,999 | 39 | 22 | 77.3 | 409 | 284 | 44.0 |
| 500,000 - 599,999 | 6 | 15 | -60.0 | 112 | 78 | 43.6 |
| 600,000 - 699,999 | 7 | 3 | 133.3 | 39 | 32 | 21.9 |
| 700,000 - 799,999 | 0 | 2 | -100.0 | 15 | 18 | -16.7 |
| 800,000 - 899,999 | 0 | 0 | 0.0 | 7 | 7 | 0.0 |
| 900,000 - 999,999 | 0 | 0 | 0.0 | 3 | 2 | 50.0 |
| 1,000,000 - 1,249,999 | 1 | 1 | 0.0 | 4 | 2 | 100.0 |
| 1,250,000 - 1,499,999 | 0 | 0 | 0.0 | 0 | 0 | 0.0 |
| 1,500,000 + | 1 | 0 | 100.0 | 1 | 0 | 100.0 |
| TOTALS | 765 | 826 | -7.4 | 7543 | 8107 | -7.0 |

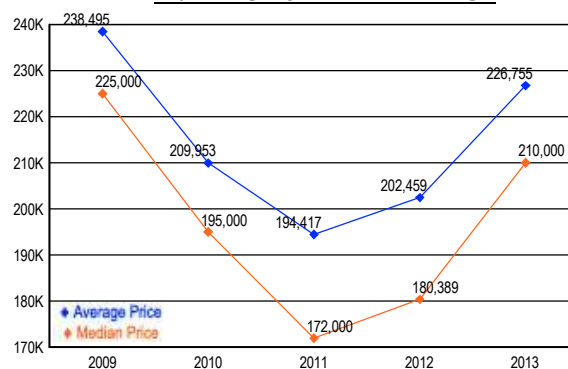
MARKET BY PRICE RANGE



SETTLEMENTS

| Price Range | New This Month | | | Year-to-Date | | |
|-----------------------|----------------|------------|--------------|--------------|-------------|------------|
| | 2013 | 2012 | % Change | 2013 | 2012 | % Change |
| 0 - 149,999 | 93 | 183 | -49.2 | 1,681 | 2,390 | -29.7 |
| 150,000 - 199,999 | 102 | 121 | -15.7 | 1,424 | 1,502 | -5.2 |
| 200,000 - 299,999 | 179 | 187 | -4.3 | 2,278 | 1,807 | 26.1 |
| 300,000 - 399,999 | 63 | 56 | 12.5 | 944 | 659 | 43.2 |
| 400,000 - 499,999 | 30 | 19 | 57.9 | 355 | 262 | 35.5 |
| 500,000 - 599,999 | 7 | 8 | -12.5 | 88 | 63 | 39.7 |
| 600,000 - 699,999 | 5 | 1 | 400.0 | 43 | 33 | 30.3 |
| 700,000 - 799,999 | 1 | 1 | 0.0 | 11 | 12 | -8.3 |
| 800,000 - 899,999 | 1 | 0 | 100.0 | 9 | 6 | 50.0 |
| 900,000 - 999,999 | 1 | 0 | 100.0 | 2 | 3 | -33.3 |
| 1,000,000 - 1,249,999 | 0 | 0 | 0.0 | 2 | 0 | 200.0 |
| 1,250,000 - 1,499,999 | 0 | 0 | 0.0 | 0 | 0 | 0.0 |
| 1,500,000 + | 0 | 0 | 0.0 | 0 | 0 | 0.0 |
| TOTALS | 482 | 576 | -16.3 | 6837 | 6737 | 1.5 |

AVERAGE & MEDIAN PRICE



DATA SOURCE: Metropolitan Regional Information Systems, Inc. (MRIS)

NOTES: Properties not listed through this Multiple Listing Service are not reflected. The term "sales" represents ratified purchase contracts. Current year information is preliminary and subject to revision. Current year-to-date contract information may not equal the sum of the monthly contract totals reported in