

# PRINCE GEORGES COUNTY

## Residential Market Report

# HOUSING REPORT

## Single Family Homes

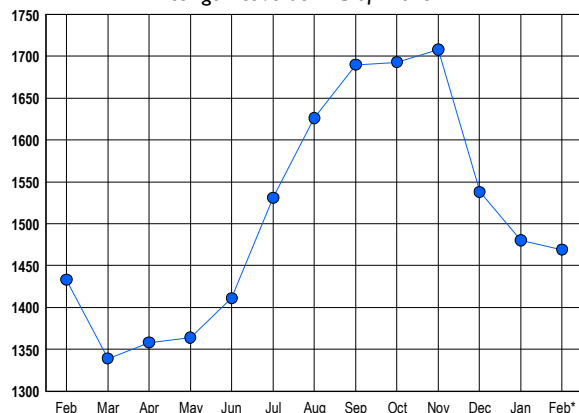
### February 2014

### LISTINGS

Prices Range	New This Month			Total Actives		
	2014	2013	% Change	2014	2013	% Change
0 - 149,999	112	180	-37.8	146	237	-38.4
150,000 - 199,999	117	149	-21.5	224	280	-20.0
200,000 - 299,999	239	214	11.7	469	399	17.5
300,000 - 399,999	117	97	20.6	303	247	22.7
400,000 - 499,999	52	52	0.0	180	135	33.3
500,000 - 599,999	23	18	27.8	80	63	27.0
600,000 - 699,999	8	11	-27.3	29	36	-19.4
700,000 - 799,999	5	4	25.0	18	12	50.0
800,000 - 899,999	1	1	0.0	9	6	50.0
900,000 - 999,999	0	3	-100.0	2	8	-75.0
1,000,000 - 1,249,999	0	2	-100.0	2	4	-50.0
1,250,000 - 1,499,999	1	0	100.0	3	0	300.0
1,500,000 +	1	0	100.0	4	6	-33.3
<b>TOTALS</b>	<b>676</b>	<b>731</b>	<b>-7.5</b>	<b>1469</b>	<b>1433</b>	<b>2.5</b>

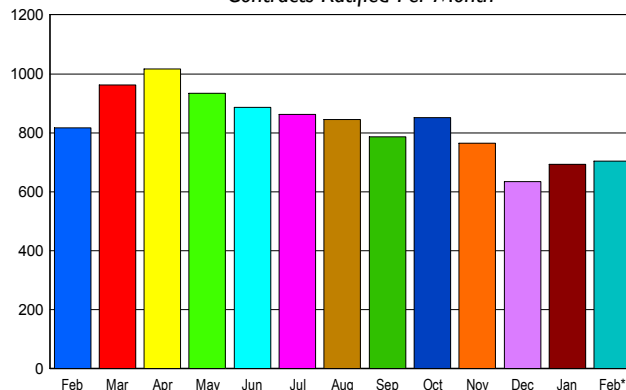
### INVENTORY TREND

Listings Active at End of Month



### SALES TREND

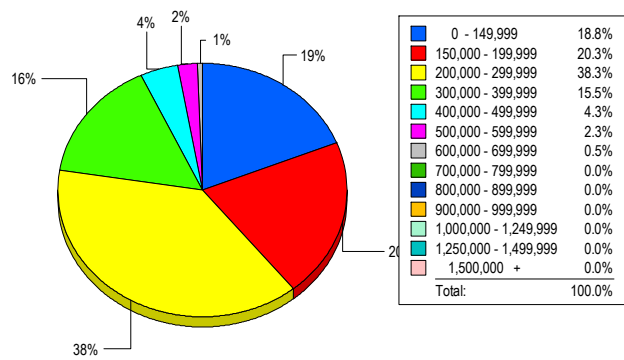
Contracts Ratified Per Month



### CONTRACTS

Price Range	New This Month			Year-To-Date		
	2014	2013	% Change	2014	2013	% Change
0 - 149,999	161	243	-33.7	297	515	-42.3
150,000 - 199,999	157	178	-11.8	300	350	-14.3
200,000 - 299,999	229	253	-9.5	444	455	-2.4
300,000 - 399,999	107	92	16.3	198	173	14.5
400,000 - 499,999	34	38	-10.5	66	64	3.1
500,000 - 599,999	9	8	12.5	19	13	46.2
600,000 - 699,999	5	3	66.7	6	9	-33.3
700,000 - 799,999	1	0	100.0	1	3	-66.7
800,000 - 899,999	0	0	0.0	0	1	-100.0
900,000 - 999,999	0	0	0.0	0	0	0.0
1,000,000 - 1,249,999	0	1	-100.0	0	1	-100.0
1,250,000 - 1,499,999	0	0	0.0	0	0	0.0
1,500,000 +	0	0	0.0	0	0	0.0
<b>TOTALS</b>	<b>703</b>	<b>816</b>	<b>-13.8</b>	<b>1331</b>	<b>1584</b>	<b>-16.0</b>

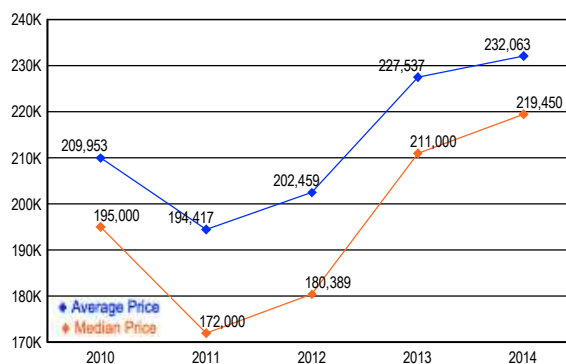
### MARKET BY PRICE RANGE



### SETTLEMENTS

Price Range	New This Month			Year-to-Date		
	2014	2013	% Change	2014	2013	% Change
0 - 149,999	75	163	-54.0	170	349	-51.3
150,000 - 199,999	81	117	-30.8	193	250	-22.8
200,000 - 299,999	153	122	25.4	298	269	10.8
300,000 - 399,999	62	39	59.0	119	106	12.3
400,000 - 499,999	17	23	-26.1	37	35	5.7
500,000 - 599,999	9	4	125.0	15	4	275.0
600,000 - 699,999	2	1	100.0	5	5	0.0
700,000 - 799,999	0	2	-100.0	0	2	-100.0
800,000 - 899,999	0	1	-100.0	1	1	0.0
900,000 - 999,999	0	0	0.0	0	0	0.0
1,000,000 - 1,249,999	0	0	0.0	0	0	0.0
1,250,000 - 1,499,999	0	0	0.0	0	0	0.0
1,500,000 +	0	0	0.0	0	0	0.0
<b>TOTALS</b>	<b>399</b>	<b>472</b>	<b>-15.5</b>	<b>838</b>	<b>1021</b>	<b>-17.9</b>

### AVERAGE & MEDIAN PRICE



DATA SOURCE: Metropolitan Regional Information Systems, Inc. (MRIS)

NOTES: Properties not listed through this Multiple Listing Service are not reflected. The term "sales" represents ratified purchase contracts. Current year information is preliminary and subject to revision. Current year-to-date contract information may not equal the sum of the monthly contract totals reported in