

PRINCE GEORGES COUNTY

Residential Market Report

HOUSING REPORT

Single Family Homes

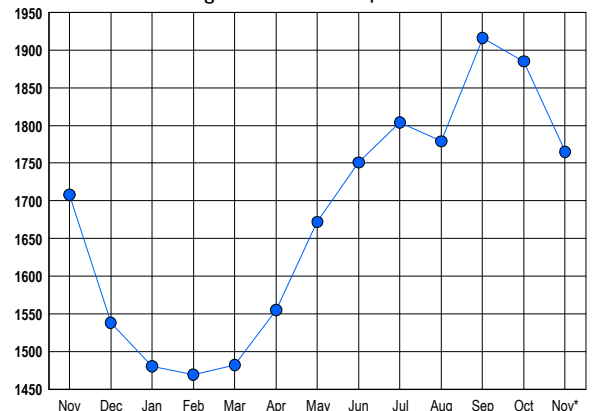
November 2014

LISTINGS

Prices Range	New This Month			Total Actives		
	2014	2013	% Change	2014	2013	% Change
0 - 149,999	86	140	-38.6	156	190	-17.9
150,000 - 199,999	141	161	-12.4	269	272	-1.1
200,000 - 299,999	272	275	-1.1	618	542	14.0
300,000 - 399,999	107	124	-13.7	299	337	-11.3
400,000 - 499,999	56	53	5.7	232	193	20.2
500,000 - 599,999	14	22	-36.4	105	88	19.3
600,000 - 699,999	6	5	20.0	46	41	12.2
700,000 - 799,999	4	2	100.0	13	17	-23.5
800,000 - 899,999	0	0	0.0	11	10	10.0
900,000 - 999,999	1	0	100.0	9	7	28.6
1,000,000 - 1,249,999	0	1	-100.0	4	5	-20.0
1,250,000 - 1,499,999	0	0	0.0	1	2	-50.0
1,500,000 +	0	1	-100.0	2	4	-50.0
TOTALS	687	784	-12.4	1765	1708	3.3

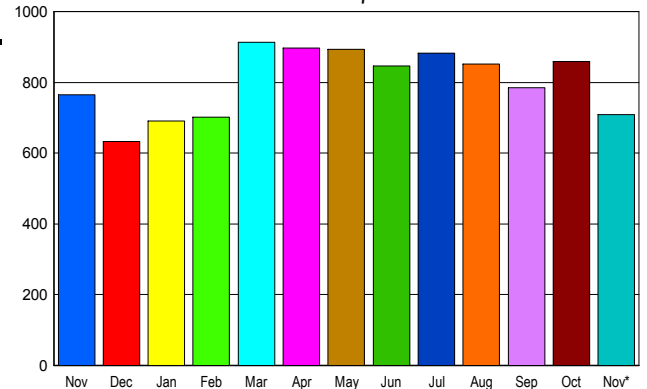
INVENTORY TREND

Listings Active at End of Month



SALES TREND

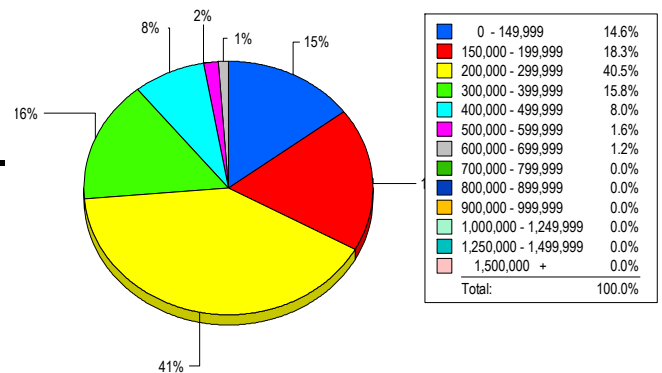
Contracts Ratified Per Month



CONTRACTS

Price Range	New This Month			Year-To-Date		
	2014	2013	% Change	2014	2013	% Change
0 - 149,999	102	158	-35.4	1,132	1,812	-37.5
150,000 - 199,999	150	178	-15.7	1,421	1,602	-11.3
200,000 - 299,999	288	274	5.1	2,770	2,502	10.7
300,000 - 399,999	105	101	4.0	1,230	1,037	18.6
400,000 - 499,999	47	39	20.5	484	409	18.3
500,000 - 599,999	10	6	66.7	130	112	16.1
600,000 - 699,999	3	7	-57.1	55	39	41.0
700,000 - 799,999	2	0	200.0	16	15	6.7
800,000 - 899,999	2	0	200.0	8	7	14.3
900,000 - 999,999	0	0	0.0	3	3	0.0
1,000,000 - 1,249,999	0	1	-100.0	0	4	-100.0
1,250,000 - 1,499,999	0	0	0.0	0	0	0.0
1,500,000 +	0	1	-100.0	1	1	0.0
TOTALS	709	765	-7.3	7250	7543	-3.9

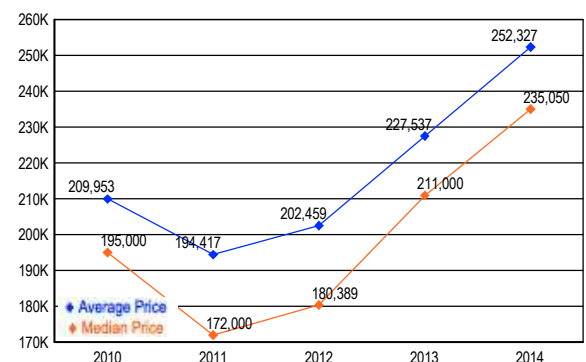
MARKET BY PRICE RANGE



SETTLEMENTS

Price Range	New This Month			Year-to-Date		
	2014	2013	% Change	2014	2013	% Change
0 - 149,999	75	93	-19.4	1,005	1,681	-40.2
150,000 - 199,999	94	102	-7.8	1,205	1,424	-15.4
200,000 - 299,999	208	179	16.2	2,434	2,278	6.8
300,000 - 399,999	81	63	28.6	1,090	944	15.5
400,000 - 499,999	41	30	36.7	423	355	19.2
500,000 - 599,999	8	7	14.3	118	88	34.1
600,000 - 699,999	6	5	20.0	51	43	18.6
700,000 - 799,999	0	1	-100.0	19	11	72.7
800,000 - 899,999	0	1	-100.0	9	9	0.0
900,000 - 999,999	0	1	-100.0	0	2	-100.0
1,000,000 - 1,249,999	0	0	0.0	0	2	-100.0
1,250,000 - 1,499,999	0	0	0.0	0	0	0.0
1,500,000 +	0	0	0.0	0	0	0.0
TOTALS	513	482	6.4	6354	6837	-7.1

AVERAGE & MEDIAN PRICE



DATA SOURCE: Metropolitan Regional Information Systems, Inc. (MRIS)

NOTES: Properties not listed through this Multiple Listing Service are not reflected. The term "sales" represents ratified purchase contracts. Current year information is preliminary and subject to revision. Current year-to-date contract information may not equal the sum of the monthly contract totals reported in