

PRINCE GEORGES COUNTY

Residential Market Report

HOUSING REPORT

Single Family Homes

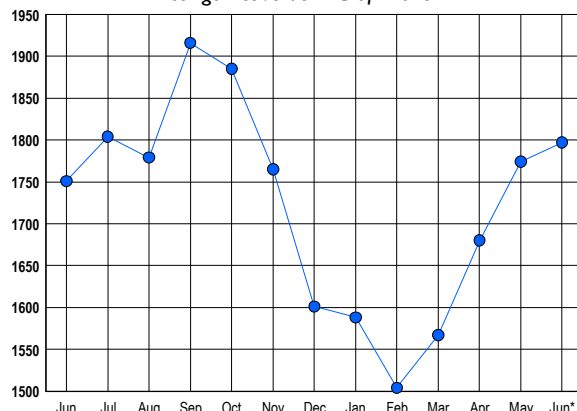
June 2015

LISTINGS

Prices Range	New This Month			Total Actives		
	2015	2014	% Change	2015	2014	% Change
0 - 149,999	106	113	-6.2	161	150	7.3
150,000 - 199,999	159	161	-1.2	215	211	1.9
200,000 - 299,999	373	381	-2.1	553	549	0.7
300,000 - 399,999	220	172	27.9	380	384	-1.0
400,000 - 499,999	100	82	22.0	266	263	1.1
500,000 - 599,999	44	28	57.1	121	97	24.7
600,000 - 699,999	14	9	55.6	42	45	-6.7
700,000 - 799,999	2	3	-33.3	29	19	52.6
800,000 - 899,999	1	6	-83.3	11	14	-21.4
900,000 - 999,999	0	1	-100.0	5	7	-28.6
1,000,000 - 1,249,999	1	1	0.0	5	4	25.0
1,250,000 - 1,499,999	0	0	0.0	2	1	100.0
1,500,000 +	1	1	0.0	7	7	0.0
TOTALS	1021	958	6.6	1797	1751	2.6

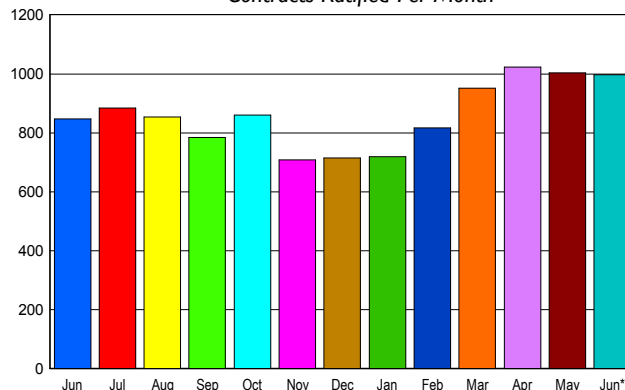
INVENTORY TREND

Listings Active at End of Month



SALES TREND

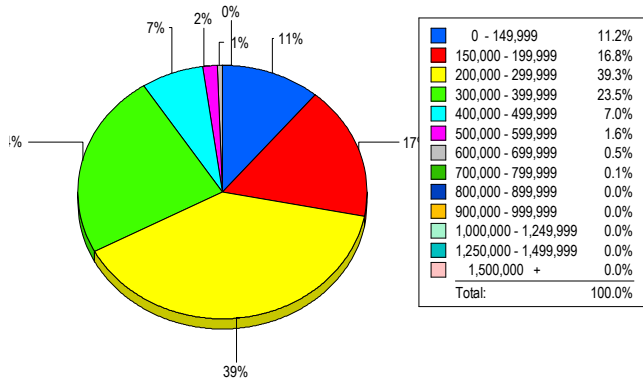
Contracts Ratified Per Month



CONTRACTS

Price Range	New This Month			Year-To-Date		
	2015	2014	% Change	2015	2014	% Change
0 - 149,999	140	132	6.1	643	746	-13.8
150,000 - 199,999	185	164	12.8	919	882	4.2
200,000 - 299,999	406	324	25.3	1,832	1,521	20.4
300,000 - 399,999	168	152	10.5	858	692	24.0
400,000 - 499,999	68	54	25.9	348	257	35.4
500,000 - 599,999	18	12	50.0	78	81	-3.7
600,000 - 699,999	9	3	200.0	31	24	29.2
700,000 - 799,999	1	3	-66.7	5	10	-50.0
800,000 - 899,999	0	1	-100.0	2	4	-50.0
900,000 - 999,999	2	0	200.0	2	0	200.0
1,000,000 - 1,249,999	0	1	-100.0	0	1	-100.0
1,250,000 - 1,499,999	0	0	0.0	0	0	0.0
1,500,000 +	0	0	0.0	1	0	100.0
TOTALS	997	846	17.8	4719	4218	11.9

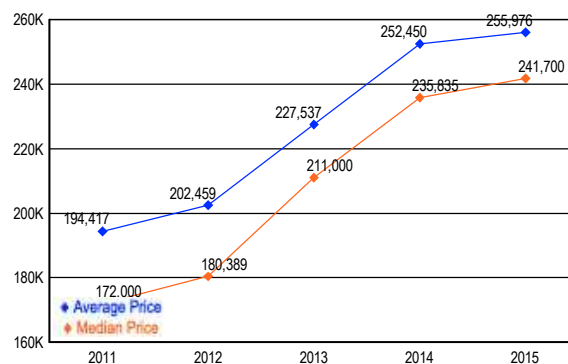
MARKET BY PRICE RANGE



SETTLEMENTS

Price Range	New This Month			Year-to-Date		
	2015	2014	% Change	2015	2014	% Change
0 - 149,999	86	85	1.2	475	575	-17.4
150,000 - 199,999	129	102	26.5	712	631	12.8
200,000 - 299,999	302	227	33.0	1,494	1,167	28.0
300,000 - 399,999	181	141	28.4	680	532	27.8
400,000 - 499,999	54	44	22.7	270	181	49.2
500,000 - 599,999	12	13	-7.7	63	61	3.3
600,000 - 699,999	4	5	-20.0	26	20	30.0
700,000 - 799,999	1	5	-80.0	6	10	-40.0
800,000 - 899,999	0	0	0.0	2	3	-33.3
900,000 - 999,999	0	0	0.0	0	0	0.0
1,000,000 - 1,249,999	0	0	0.0	0	0	0.0
1,250,000 - 1,499,999	0	0	0.0	1	0	100.0
1,500,000 +	0	0	0.0	1	0	100.0
TOTALS	769	622	23.6	3730	3180	17.3

AVERAGE & MEDIAN PRICE



DATA SOURCE: Metropolitan Regional Information Systems, Inc. (MRIS)

NOTES: Properties not listed through this Multiple Listing Service are not reflected. The term "sales" represents ratified purchase contracts. Current year information is preliminary and subject to revision. Current year-to-date contract information may not equal the sum of the monthly contract totals reported in