

# PRINCE GEORGES COUNTY

## Residential Market Report



# HOUSING REPORT

## Single Family Homes

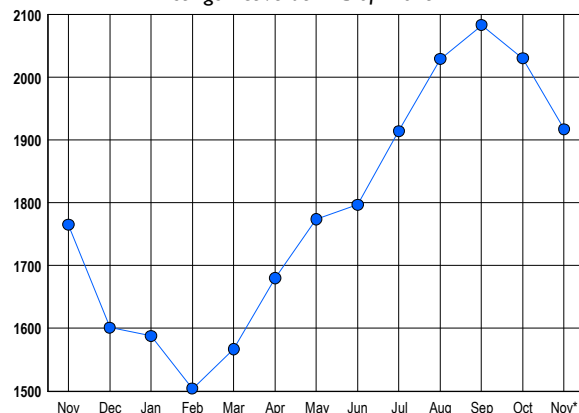
### November 2015

### LISTINGS

Prices Range	New This Month			Total Actives		
	2015	2014	% Change	2015	2014	% Change
0 - 149,999	89	86	3.5	172	156	10.3
150,000 - 199,999	137	141	-2.8	244	269	-9.3
200,000 - 299,999	327	272	20.2	617	618	-0.2
300,000 - 399,999	181	107	69.2	407	299	36.1
400,000 - 499,999	50	56	-10.7	255	232	9.9
500,000 - 599,999	25	14	78.6	119	105	13.3
600,000 - 699,999	10	6	66.7	58	46	26.1
700,000 - 799,999	5	4	25.0	20	13	53.8
800,000 - 899,999	1	0	100.0	14	11	27.3
900,000 - 999,999	1	1	0.0	3	9	-66.7
1,000,000 - 1,249,999	1	0	100.0	5	4	25.0
1,250,000 - 1,499,999	0	0	0.0	1	1	0.0
1,500,000 +	0	0	0.0	2	2	0.0
<b>TOTALS</b>	<b>827</b>	<b>687</b>	<b>20.4</b>	<b>1917</b>	<b>1765</b>	<b>8.6</b>

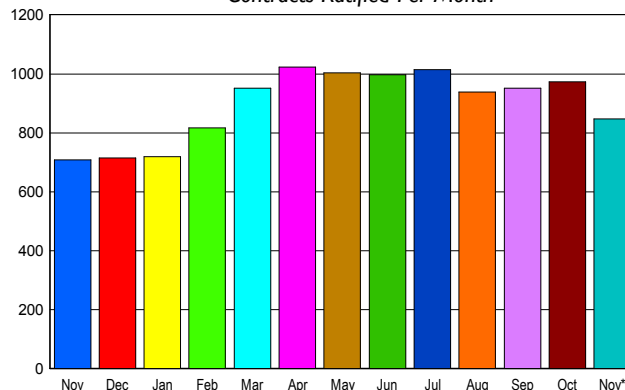
### INVENTORY TREND

Listings Active at End of Month



### SALES TREND

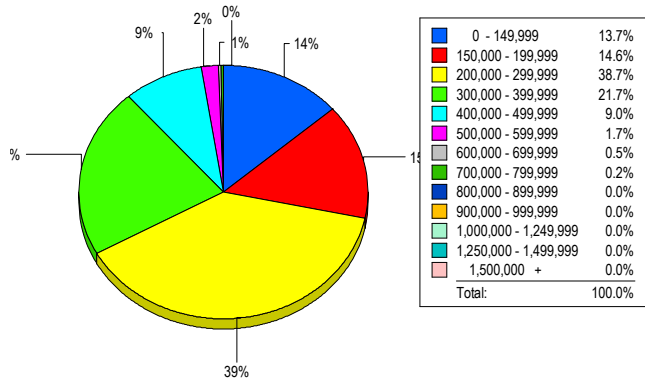
Contracts Ratified Per Month



### CONTRACTS

Price Range	New This Month			Year-To-Date		
	2015	2014	% Change	2015	2014	% Change
0 - 149,999	107	102	4.9	1,033	1,132	-8.7
150,000 - 199,999	156	150	4.0	1,514	1,421	6.5
200,000 - 299,999	331	288	14.9	3,259	2,770	17.7
300,000 - 399,999	171	105	62.9	1,612	1,230	31.1
400,000 - 499,999	53	47	12.8	639	484	32.0
500,000 - 599,999	15	10	50.0	155	130	19.2
600,000 - 699,999	11	3	266.7	59	55	7.3
700,000 - 799,999	2	2	0.0	17	16	6.3
800,000 - 899,999	0	2	-100.0	5	8	-37.5
900,000 - 999,999	0	0	0.0	3	3	0.0
1,000,000 - 1,249,999	0	0	0.0	0	0	0.0
1,250,000 - 1,499,999	0	0	0.0	0	0	0.0
1,500,000 +	0	0	0.0	3	1	200.0
<b>TOTALS</b>	<b>846</b>	<b>709</b>	<b>19.3</b>	<b>8299</b>	<b>7250</b>	<b>14.5</b>

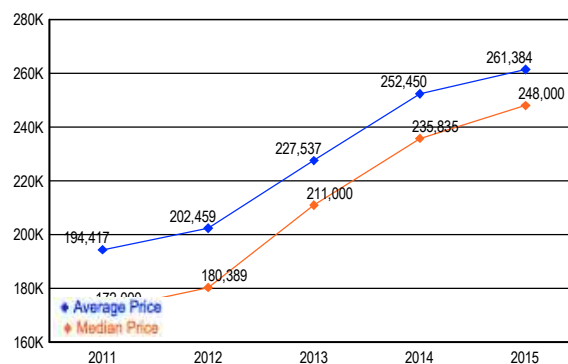
### MARKET BY PRICE RANGE



### SETTLEMENTS

Price Range	New This Month			Year-to-Date		
	2015	2014	% Change	2015	2014	% Change
0 - 149,999	81	75	8.0	924	1,005	-8.1
150,000 - 199,999	86	94	-8.5	1,268	1,205	5.2
200,000 - 299,999	229	208	10.1	2,999	2,434	23.2
300,000 - 399,999	128	81	58.0	1,409	1,090	29.3
400,000 - 499,999	53	41	29.3	577	423	36.4
500,000 - 599,999	10	8	25.0	139	118	17.8
600,000 - 699,999	3	6	-50.0	53	51	3.9
700,000 - 799,999	1	0	100.0	19	19	0.0
800,000 - 899,999	0	0	0.0	5	9	-44.4
900,000 - 999,999	0	0	0.0	0	0	0.0
1,000,000 - 1,249,999	0	0	0.0	0	0	0.0
1,250,000 - 1,499,999	0	0	0.0	1	0	100.0
1,500,000 +	0	0	0.0	2	0	200.0
<b>TOTALS</b>	<b>591</b>	<b>513</b>	<b>15.2</b>	<b>7396</b>	<b>6354</b>	<b>16.4</b>

### AVERAGE & MEDIAN PRICE



DATA SOURCE: Metropolitan Regional Information Systems, Inc. (MRIS)

NOTES: Properties not listed through this Multiple Listing Service are not reflected. The term "sales" represents ratified purchase contracts. Current year information is preliminary and subject to revision. Current year-to-date contract information may not equal the sum of the monthly contract totals reported in