

# PRINCE GEORGES COUNTY Residential Market Report



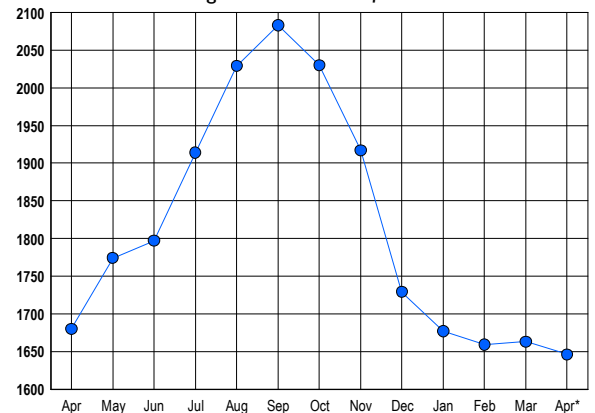
# HOUSING REPORT Single Family Homes April 2016

## LISTINGS

Prices Range	New This Month			Total Actives		
	2016	2015	% Change	2016	2015	% Change
0 - 149,999	109	137	-20.4	124	162	-23.5
150,000 - 199,999	135	166	-18.7	154	206	-25.2
200,000 - 299,999	450	426	5.6	498	508	-2.0
300,000 - 399,999	323	249	29.7	385	339	13.6
400,000 - 499,999	174	104	67.3	262	240	9.2
500,000 - 599,999	52	40	30.0	121	123	-1.6
600,000 - 699,999	19	10	90.0	59	41	43.9
700,000 - 799,999	3	6	-50.0	20	25	-20.0
800,000 - 899,999	1	2	-50.0	8	13	-38.5
900,000 - 999,999	1	2	-50.0	5	9	-44.4
1,000,000 - 1,249,999	2	2	0.0	3	4	-25.0
1,250,000 - 1,499,999	1	1	0.0	2	2	0.0
1,500,000 +	3	3	0.0	5	8	-37.5
<b>TOTALS</b>	<b>1273</b>	<b>1148</b>	<b>10.9</b>	<b>1646</b>	<b>1680</b>	<b>-2.0</b>

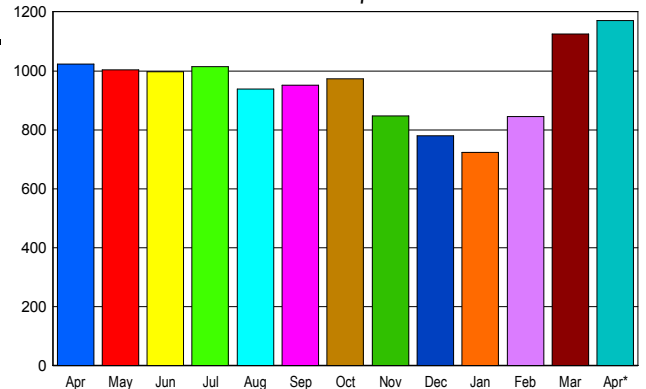
## INVENTORY TREND

Lists Active at End of Month



## SALES TREND

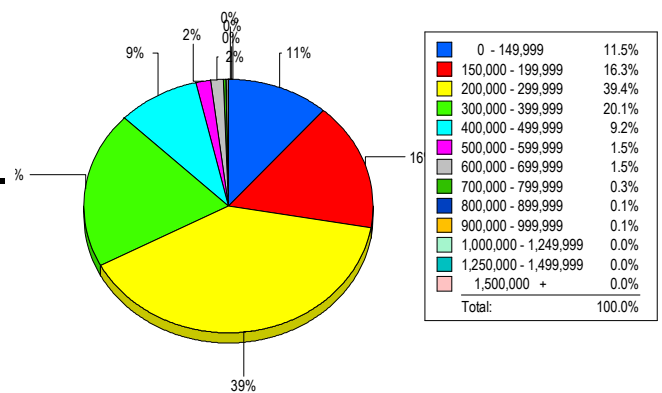
Contracts Ratified Per Month



## CONTRACTS

Price Range	New This Month			Year-To-Date		
	2016	2015	% Change	2016	2015	% Change
0 - 149,999	131	144	-9.0	436	437	-0.2
150,000 - 199,999	176	182	-3.3	559	664	-15.8
200,000 - 299,999	458	402	13.9	1,381	1,202	14.9
300,000 - 399,999	261	202	29.2	731	545	34.1
400,000 - 499,999	97	66	47.0	274	223	22.9
500,000 - 599,999	36	19	89.5	86	53	62.3
600,000 - 699,999	5	4	25.0	25	19	31.6
700,000 - 799,999	6	1	500.0	8	4	100.0
800,000 - 899,999	0	0	0.0	3	0	300.0
900,000 - 999,999	0	0	0.0	0	0	0.0
1,000,000 - 1,249,999	0	0	0.0	1	0	100.0
1,250,000 - 1,499,999	0	0	0.0	0	0	0.0
1,500,000 +	0	2	-100.0	0	3	-100.0
<b>TOTALS</b>	<b>1170</b>	<b>1022</b>	<b>14.5</b>	<b>3504</b>	<b>3150</b>	<b>11.2</b>

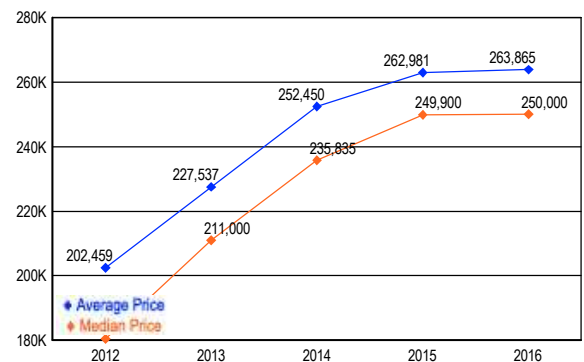
## MARKET BY PRICE RANGE



## SETTLEMENTS

Price Range	New This Month			Year-to-Date		
	2016	2015	% Change	2016	2015	% Change
0 - 149,999	84	74	13.5	329	299	10.0
150,000 - 199,999	119	123	-3.3	427	463	-7.8
200,000 - 299,999	288	277	4.0	1,014	912	11.2
300,000 - 399,999	147	116	26.7	508	362	40.3
400,000 - 499,999	67	41	63.4	202	152	32.9
500,000 - 599,999	11	7	57.1	41	34	20.6
600,000 - 699,999	11	5	120.0	30	20	50.0
700,000 - 799,999	2	0	200.0	5	4	25.0
800,000 - 899,999	1	0	100.0	1	1	0.0
900,000 - 999,999	1	0	100.0	1	0	100.0
1,000,000 - 1,249,999	0	0	0.0	0	0	0.0
1,250,000 - 1,499,999	0	0	0.0	0	1	-100.0
1,500,000 +	0	0	0.0	0	1	-100.0
<b>TOTALS</b>	<b>731</b>	<b>643</b>	<b>13.7</b>	<b>2558</b>	<b>2249</b>	<b>13.7</b>

## AVERAGE & MEDIAN PRICE



DATA SOURCE: Metropolitan Regional Information Systems, Inc. (MRIS)

NOTES: Properties not listed through this Multiple Listing Service are not reflected. The term "sales" represents ratified purchase contracts. Current year information is preliminary and subject to revision. Current year-to-date contract information may not equal the sum of the monthly contract totals reported in