

# PRINCE GEORGES COUNTY

## Residential Market Report



# HOUSING REPORT

## Single Family Homes

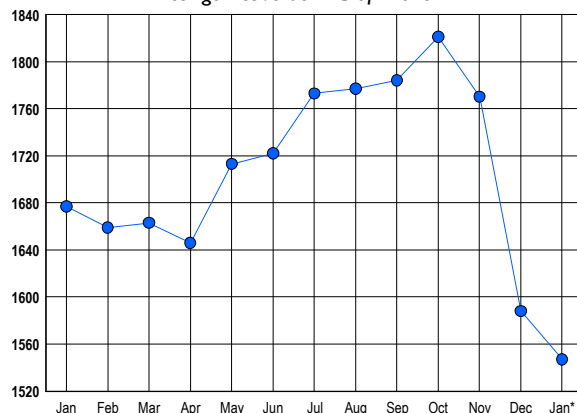
### January 2017

### LISTINGS

Prices Range	New This Month			Total Actives		
	2017	2016	% Change	2017	2016	% Change
0 - 149,999	56	75	-25.3	89	145	-38.6
150,000 - 199,999	96	121	-20.7	103	243	-57.6
200,000 - 299,999	336	271	24.0	503	526	-4.4
300,000 - 399,999	208	136	52.9	403	343	17.5
400,000 - 499,999	84	75	12.0	233	217	7.4
500,000 - 599,999	31	32	-3.1	108	109	-0.9
600,000 - 699,999	17	10	70.0	64	53	20.8
700,000 - 799,999	4	4	0.0	19	22	-13.6
800,000 - 899,999	1	3	-66.7	5	9	-44.4
900,000 - 999,999	1	0	100.0	6	3	100.0
1,000,000 - 1,249,999	0	0	0.0	5	5	0.0
1,250,000 - 1,499,999	1	0	100.0	3	1	200.0
1,500,000 +	1	0	100.0	6	1	500.0
<b>TOTALS</b>	<b>836</b>	<b>727</b>	<b>15.0</b>	<b>1547</b>	<b>1677</b>	<b>-7.8</b>

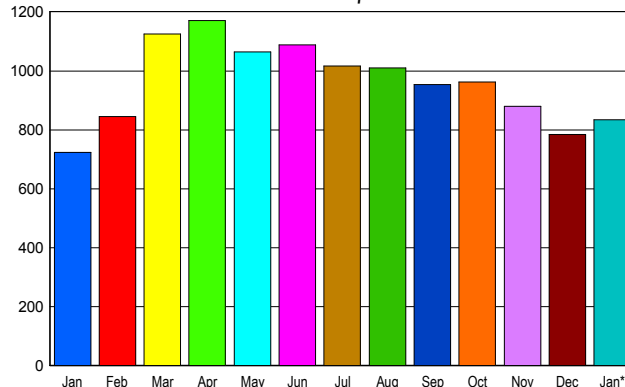
### INVENTORY TREND

Lists Active at End of Month



### SALES TREND

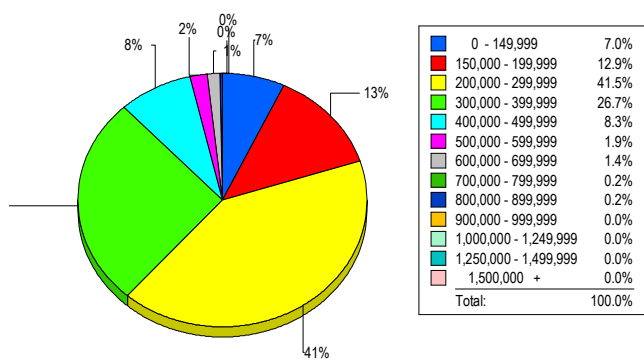
Contracts Ratified Per Month



### CONTRACTS

Price Range	New This Month			Year-To-Date		
	2017	2016	% Change	2017	2016	% Change
0 - 149,999	64	105	-39.0	64	105	-39.0
150,000 - 199,999	116	128	-9.4	116	128	-9.4
200,000 - 299,999	327	284	15.1	327	284	15.1
300,000 - 399,999	213	144	47.9	213	144	47.9
400,000 - 499,999	80	38	110.5	80	38	110.5
500,000 - 599,999	23	18	27.8	23	18	27.8
600,000 - 699,999	6	5	20.0	6	5	20.0
700,000 - 799,999	1	0	100.0	1	0	100.0
800,000 - 899,999	2	0	200.0	2	0	200.0
900,000 - 999,999	1	0	100.0	1	0	100.0
1,000,000 - 1,249,999	0	1	-100.0	0	1	-100.0
1,250,000 - 1,499,999	1	0	100.0	1	0	100.0
1,500,000 +	0	0	0.0	0	0	0.0
<b>TOTALS</b>	<b>834</b>	<b>723</b>	<b>15.4</b>	<b>834</b>	<b>723</b>	<b>15.4</b>

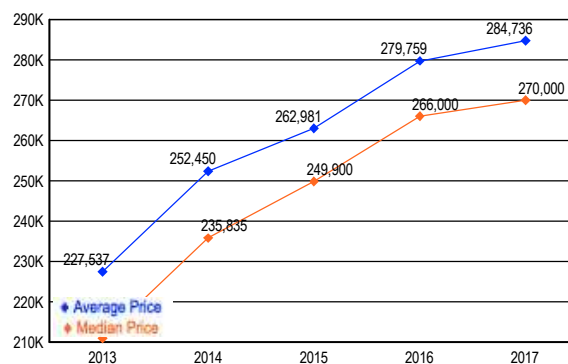
### MARKET BY PRICE RANGE



### SETTLEMENTS

Price Range	New This Month			Year-to-Date		
	2017	2016	% Change	2017	2016	% Change
0 - 149,999	41	55	-25.5	41	55	-25.5
150,000 - 199,999	76	94	-19.1	76	94	-19.1
200,000 - 299,999	244	222	9.9	244	222	9.9
300,000 - 399,999	157	105	49.5	157	105	49.5
400,000 - 499,999	49	48	2.1	49	48	2.1
500,000 - 599,999	11	8	37.5	11	8	37.5
600,000 - 699,999	8	4	100.0	8	4	100.0
700,000 - 799,999	1	0	100.0	1	0	100.0
800,000 - 899,999	1	0	100.0	1	0	100.0
900,000 - 999,999	0	0	0.0	0	0	0.0
1,000,000 - 1,249,999	0	0	0.0	0	0	0.0
1,250,000 - 1,499,999	0	0	0.0	0	0	0.0
1,500,000 +	0	0	0.0	0	0	0.0
<b>TOTALS</b>	<b>588</b>	<b>536</b>	<b>9.7</b>	<b>588</b>	<b>536</b>	<b>9.7</b>

### AVERAGE & MEDIAN PRICE



DATA SOURCE: Metropolitan Regional Information Systems, Inc. (MRIS)

NOTES: Properties not listed through this Multiple Listing Service are not reflected. The term "sales" represents ratified purchase contracts. Current year information is preliminary and subject to revision. Current year-to-date contract information may not equal the sum of the monthly contract totals reported in