

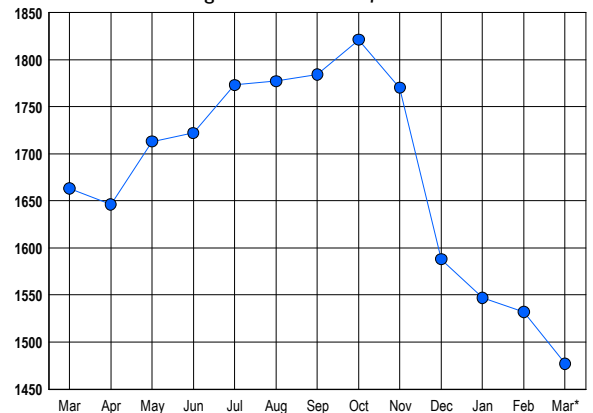


### LISTINGS

Prices Range	New This Month			Total Actives		
	2017	2016	% Change	2017	2016	% Change
0 - 149,999	42	99	-57.6	69	127	-45.7
150,000 - 199,999	98	153	-35.9	73	189	-61.4
200,000 - 299,999	390	425	-8.2	396	514	-23.0
300,000 - 399,999	364	265	37.4	455	393	15.8
400,000 - 499,999	138	110	25.5	255	223	14.3
500,000 - 599,999	55	40	37.5	114	122	-6.6
600,000 - 699,999	15	19	-21.1	63	52	21.2
700,000 - 799,999	9	4	125.0	27	22	22.7
800,000 - 899,999	5	6	-16.7	7	11	-36.4
900,000 - 999,999	2	0	200.0	7	3	133.3
1,000,000 - 1,249,999	1	0	100.0	4	2	100.0
1,250,000 - 1,499,999	0	0	0.0	2	1	100.0
1,500,000 +	0	1	-100.0	5	4	25.0
<b>TOTALS</b>	<b>1119</b>	<b>1122</b>	<b>-0.3</b>	<b>1477</b>	<b>1663</b>	<b>-11.2</b>

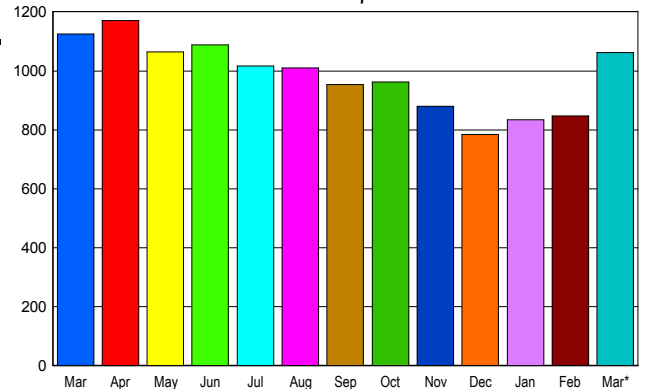
### INVENTORY TREND

Listings Active at End of Month



### SALES TREND

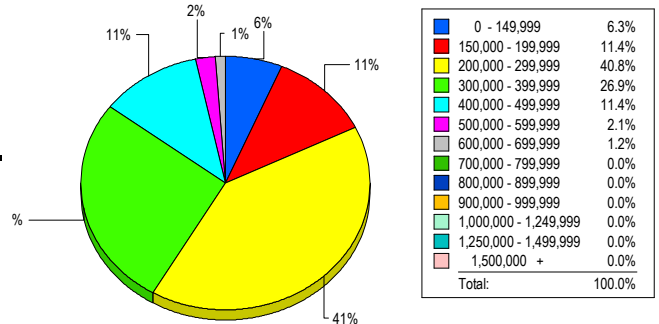
Contracts Ratified Per Month



### CONTRACTS

Price Range	New This Month			Year-To-Date		
	2017	2016	% Change	2017	2016	% Change
0 - 149,999	57	127	-55.1	168	325	-48.3
150,000 - 199,999	123	181	-32.0	309	419	-26.3
200,000 - 299,999	469	468	0.2	1,068	1,002	6.6
300,000 - 399,999	266	225	18.2	647	492	31.5
400,000 - 499,999	105	87	20.7	255	179	42.5
500,000 - 599,999	25	21	19.0	71	54	31.5
600,000 - 699,999	11	10	10.0	22	20	10.0
700,000 - 799,999	1	3	-66.7	2	3	-33.3
800,000 - 899,999	2	2	0.0	4	3	33.3
900,000 - 999,999	2	0	200.0	3	0	300.0
1,000,000 - 1,249,999	0	0	0.0	0	1	-100.0
1,250,000 - 1,499,999	0	0	0.0	2	0	200.0
1,500,000 +	0	0	0.0	0	0	0.0
<b>TOTALS</b>	<b>1061</b>	<b>1124</b>	<b>-5.6</b>	<b>2551</b>	<b>2498</b>	<b>2.1</b>

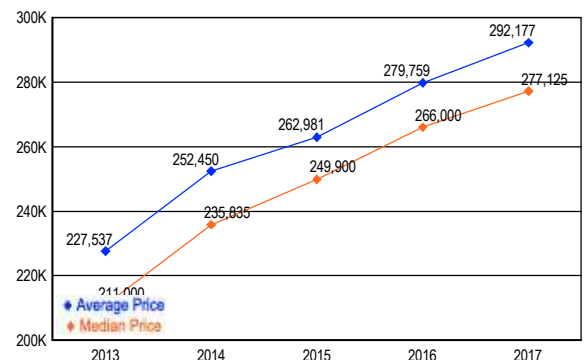
### MARKET BY PRICE RANGE



### SETTLEMENTS

Price Range	New This Month			Year-to-Date		
	2017	2016	% Change	2017	2016	% Change
0 - 149,999	48	79	-39.2	133	233	-42.9
150,000 - 199,999	87	97	-10.3	233	298	-21.8
200,000 - 299,999	311	255	22.0	813	717	13.4
300,000 - 399,999	205	125	64.0	532	347	53.3
400,000 - 499,999	87	38	128.9	203	126	61.1
500,000 - 599,999	16	11	45.5	60	25	140.0
600,000 - 699,999	9	4	125.0	19	18	5.6
700,000 - 799,999	0	1	-100.0	2	3	-33.3
800,000 - 899,999	0	0	0.0	1	0	100.0
900,000 - 999,999	0	0	0.0	3	0	300.0
1,000,000 - 1,249,999	0	0	0.0	0	0	0.0
1,250,000 - 1,499,999	0	0	0.0	1	0	100.0
1,500,000 +	0	0	0.0	0	0	0.0
<b>TOTALS</b>	<b>763</b>	<b>610</b>	<b>25.1</b>	<b>2000</b>	<b>1767</b>	<b>13.2</b>

### AVERAGE & MEDIAN PRICE



DATA SOURCE: Metropolitan Regional Information Systems, Inc. (MRIS)

NOTES: Properties not listed through this Multiple Listing Service are not reflected. The term "sales" represents ratified purchase contracts. Current year information is preliminary and subject to revision. Current year-to-date contract information may not equal the sum of the monthly contract totals reported in