

PRINCE GEORGES COUNTY

Residential Market Report



HOUSING REPORT

Single Family Homes

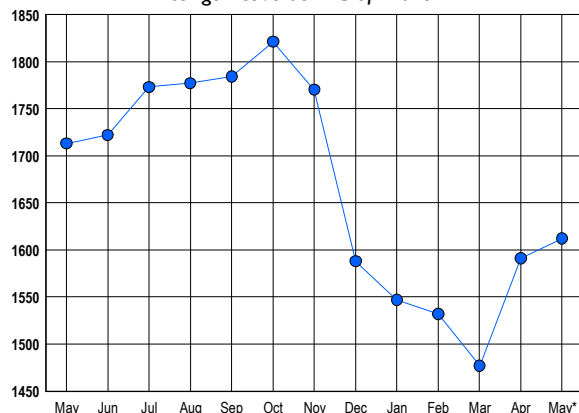
May 2017

LISTINGS

Prices Range	New This Month			Total Actives		
	2017	2016	% Change	2017	2016	% Change
0 - 149,999	57	73	-21.9	65	108	-39.8
150,000 - 199,999	110	122	-9.8	115	155	-25.8
200,000 - 299,999	409	387	5.7	423	495	-14.5
300,000 - 399,999	369	286	29.0	481	443	8.6
400,000 - 499,999	159	141	12.8	274	274	0.0
500,000 - 599,999	45	61	-26.2	130	135	-3.7
600,000 - 699,999	26	19	36.8	76	56	35.7
700,000 - 799,999	4	11	-63.6	23	24	-4.2
800,000 - 899,999	1	4	-75.0	7	10	-30.0
900,000 - 999,999	2	1	100.0	6	5	20.0
1,000,000 - 1,249,999	0	0	0.0	4	1	300.0
1,250,000 - 1,499,999	2	0	200.0	2	2	0.0
1,500,000 +	1	0	100.0	6	5	20.0
TOTALS	1185	1105	7.2	1612	1713	-5.9

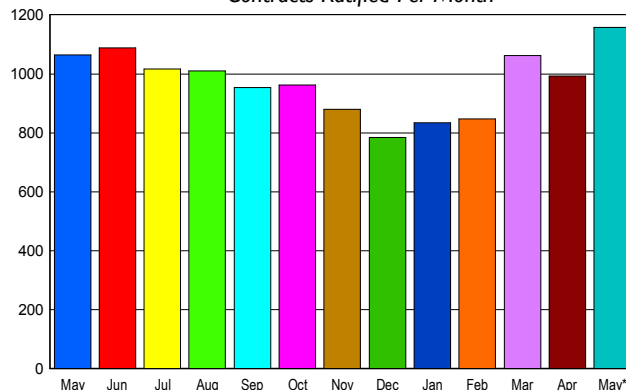
INVENTORY TREND

Listings Active at End of Month



SALES TREND

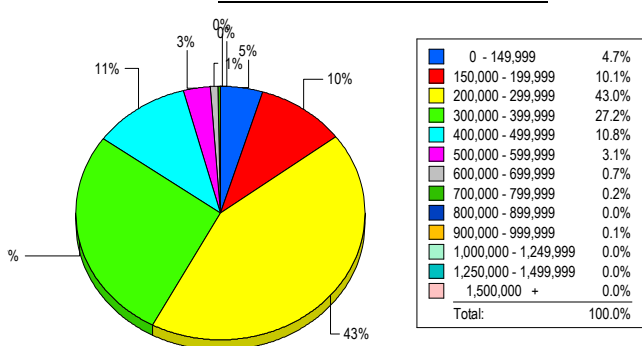
Contracts Ratified Per Month



CONTRACTS

Price Range	New This Month			Year-To-Date		
	2017	2016	% Change	2017	2016	% Change
0 - 149,999	72	108	-33.3	257	512	-49.8
150,000 - 199,999	103	154	-33.1	462	674	-31.5
200,000 - 299,999	466	444	5.0	1,808	1,737	4.1
300,000 - 399,999	348	226	54.0	1,192	936	27.4
400,000 - 499,999	119	93	28.0	457	357	28.0
500,000 - 599,999	29	28	3.6	135	110	22.7
600,000 - 699,999	15	8	87.5	41	34	20.6
700,000 - 799,999	3	1	200.0	6	10	-40.0
800,000 - 899,999	0	0	0.0	4	4	0.0
900,000 - 999,999	3	2	50.0	5	2	150.0
1,000,000 - 1,249,999	0	0	0.0	0	1	-100.0
1,250,000 - 1,499,999	0	0	0.0	1	0	100.0
1,500,000 +	0	0	0.0	0	0	0.0
TOTALS	1158	1064	8.8	4368	4377	-0.2

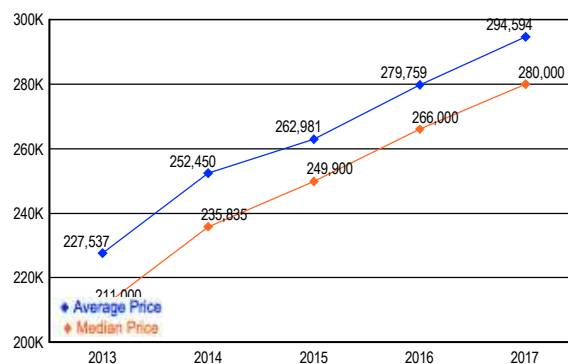
MARKET BY PRICE RANGE



SETTLEMENTS

Price Range	New This Month			Year-to-Date		
	2017	2016	% Change	2017	2016	% Change
0 - 149,999	39	74	-47.3	214	409	-47.7
150,000 - 199,999	84	107	-21.5	395	544	-27.4
200,000 - 299,999	357	345	3.5	1,497	1,378	8.6
300,000 - 399,999	226	208	8.7	991	723	37.1
400,000 - 499,999	90	62	45.2	373	271	37.6
500,000 - 599,999	26	18	44.4	113	60	88.3
600,000 - 699,999	6	11	-45.5	35	42	-16.7
700,000 - 799,999	2	2	0.0	4	7	-42.9
800,000 - 899,999	0	0	0.0	2	2	0.0
900,000 - 999,999	1	0	100.0	5	1	400.0
1,000,000 - 1,249,999	0	0	0.0	0	0	0.0
1,250,000 - 1,499,999	0	0	0.0	1	0	100.0
1,500,000 +	0	0	0.0	0	0	0.0
TOTALS	831	827	0.5	3630	3437	5.6

AVERAGE & MEDIAN PRICE



DATA SOURCE: Metropolitan Regional Information Systems, Inc. (MRIS)

NOTES: Properties not listed through this Multiple Listing Service are not reflected. The term "sales" represents ratified purchase contracts. Current year information is preliminary and subject to revision. Current year-to-date contract information may not equal the sum of the monthly contract totals reported in