

PRINCE GEORGES COUNTY

Residential Market Report



HOUSING REPORT

Single Family Homes

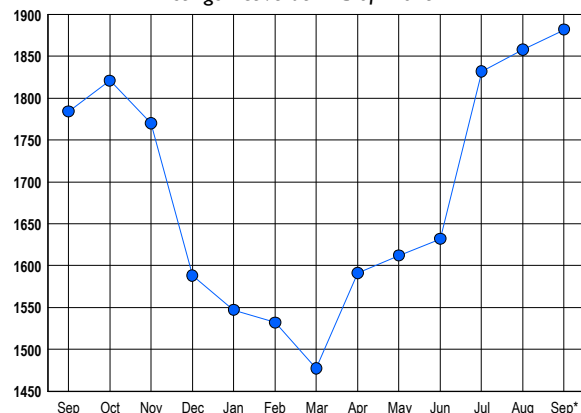
September 2017

LISTINGS

| Prices Range | New This Month | | | Total Actives | | |
|-----------------------|----------------|-------------|------------|---------------|-------------|------------|
| | 2017 | 2016 | % Change | 2017 | 2016 | % Change |
| 0 - 149,999 | 44 | 75 | -41.3 | 58 | 93 | -37.6 |
| 150,000 - 199,999 | 76 | 111 | -31.5 | 105 | 147 | -28.6 |
| 200,000 - 299,999 | 394 | 399 | -1.3 | 564 | 556 | 1.4 |
| 300,000 - 399,999 | 350 | 249 | 40.6 | 548 | 463 | 18.4 |
| 400,000 - 499,999 | 145 | 134 | 8.2 | 314 | 281 | 11.7 |
| 500,000 - 599,999 | 54 | 47 | 14.9 | 149 | 126 | 18.3 |
| 600,000 - 699,999 | 25 | 21 | 19.0 | 82 | 67 | 22.4 |
| 700,000 - 799,999 | 8 | 5 | 60.0 | 28 | 27 | 3.7 |
| 800,000 - 899,999 | 2 | 0 | 200.0 | 16 | 5 | 220.0 |
| 900,000 - 999,999 | 4 | 0 | 400.0 | 9 | 5 | 80.0 |
| 1,000,000 - 1,249,999 | 0 | 0 | 0.0 | 1 | 7 | -85.7 |
| 1,250,000 - 1,499,999 | 0 | 0 | 0.0 | 3 | 2 | 50.0 |
| 1,500,000 + | 0 | 1 | -100.0 | 5 | 5 | 0.0 |
| TOTALS | 1102 | 1042 | 5.8 | 1882 | 1784 | 5.5 |

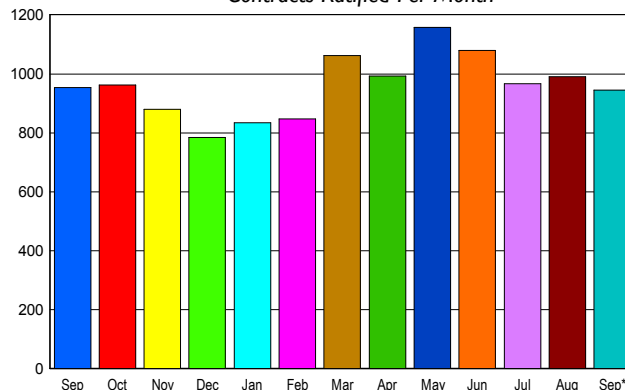
INVENTORY TREND

Listings Active at End of Month



SALES TREND

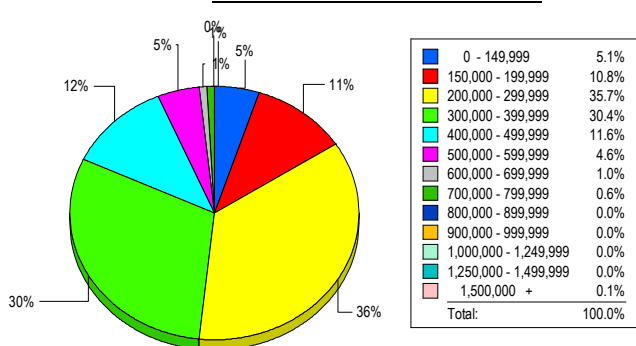
Contracts Ratified Per Month



CONTRACTS

| Price Range | New This Month | | | Year-To-Date | | |
|-----------------------|----------------|------------|-------------|--------------|-------------|------------|
| | 2017 | 2016 | % Change | 2017 | 2016 | % Change |
| 0 - 149,999 | 45 | 84 | -46.4 | 422 | 781 | -46.0 |
| 150,000 - 199,999 | 82 | 116 | -29.3 | 792 | 1,073 | -26.2 |
| 200,000 - 299,999 | 375 | 424 | -11.6 | 3,047 | 3,024 | 0.8 |
| 300,000 - 399,999 | 276 | 212 | 30.2 | 2,232 | 1,747 | 27.8 |
| 400,000 - 499,999 | 101 | 84 | 20.2 | 849 | 696 | 22.0 |
| 500,000 - 599,999 | 43 | 20 | 115.0 | 265 | 185 | 43.2 |
| 600,000 - 699,999 | 13 | 8 | 62.5 | 92 | 60 | 53.3 |
| 700,000 - 799,999 | 5 | 4 | 25.0 | 18 | 17 | 5.9 |
| 800,000 - 899,999 | 1 | 1 | 0.0 | 7 | 5 | 40.0 |
| 900,000 - 999,999 | 0 | 0 | 0.0 | 7 | 1 | 600.0 |
| 1,000,000 - 1,249,999 | 2 | 0 | 200.0 | 3 | 1 | 200.0 |
| 1,250,000 - 1,499,999 | 0 | 0 | 0.0 | 1 | 0 | 100.0 |
| 1,500,000 + | 1 | 0 | 100.0 | 1 | 0 | 100.0 |
| TOTALS | 944 | 953 | -0.9 | 7736 | 7590 | 1.9 |

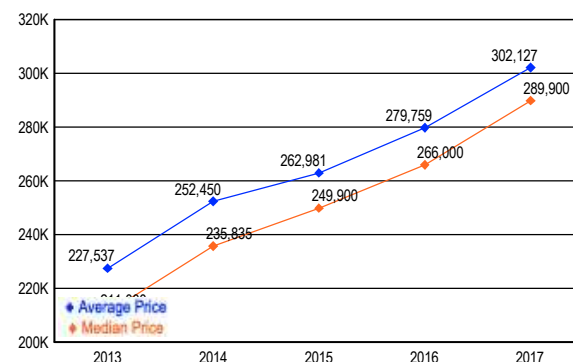
MARKET BY PRICE RANGE



SETTLEMENTS

| Price Range | New This Month | | | Year-to-Date | | |
|-----------------------|----------------|------------|------------|--------------|-------------|------------|
| | 2017 | 2016 | % Change | 2017 | 2016 | % Change |
| 0 - 149,999 | 40 | 67 | -40.3 | 374 | 690 | -45.8 |
| 150,000 - 199,999 | 85 | 94 | -9.6 | 715 | 985 | -27.4 |
| 200,000 - 299,999 | 280 | 322 | -13.0 | 2,882 | 2,704 | 6.6 |
| 300,000 - 399,999 | 238 | 197 | 20.8 | 2,100 | 1,565 | 34.2 |
| 400,000 - 499,999 | 91 | 78 | 16.7 | 809 | 658 | 22.9 |
| 500,000 - 599,999 | 36 | 16 | 125.0 | 241 | 148 | 62.8 |
| 600,000 - 699,999 | 8 | 6 | 33.3 | 92 | 70 | 31.4 |
| 700,000 - 799,999 | 5 | 1 | 400.0 | 16 | 10 | 60.0 |
| 800,000 - 899,999 | 0 | 0 | 0.0 | 6 | 4 | 50.0 |
| 900,000 - 999,999 | 0 | 0 | 0.0 | 7 | 3 | 133.3 |
| 1,000,000 - 1,249,999 | 0 | 0 | 0.0 | 1 | 0 | 100.0 |
| 1,250,000 - 1,499,999 | 0 | 0 | 0.0 | 1 | 0 | 100.0 |
| 1,500,000 + | 1 | 0 | 100.0 | 1 | 0 | 100.0 |
| TOTALS | 784 | 781 | 0.4 | 7245 | 6837 | 6.0 |

AVERAGE & MEDIAN PRICE



DATA SOURCE: Metropolitan Regional Information Systems, Inc. (MRIS)

NOTES: Properties not listed through this Multiple Listing Service are not reflected. The term "sales" represents ratified purchase contracts. Current year information is preliminary and subject to revision. Current year-to-date contract information may not equal the sum of the monthly contract totals reported in