

PRINCE GEORGES COUNTY

Residential Market Report



HOUSING REPORT

Single Family Homes

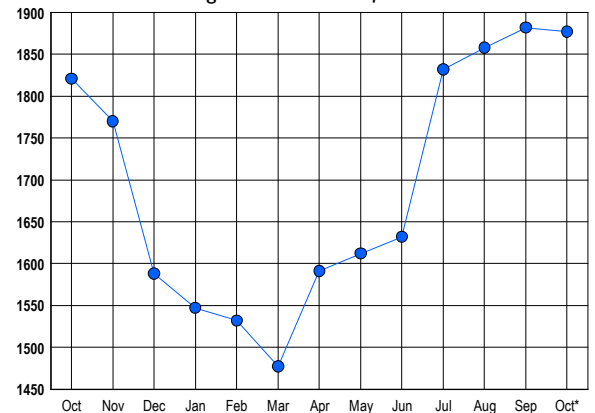
October 2017

LISTINGS

Prices Range	New This Month			Total Actives		
	2017	2016	% Change	2017	2016	% Change
0 - 149,999	30	61	-50.8	49	91	-46.2
150,000 - 199,999	86	109	-21.1	104	124	-16.1
200,000 - 299,999	412	393	4.8	587	547	7.3
300,000 - 399,999	321	291	10.3	551	523	5.4
400,000 - 499,999	153	106	44.3	295	288	2.4
500,000 - 599,999	45	33	36.4	155	124	25.0
600,000 - 699,999	36	19	89.5	80	73	9.6
700,000 - 799,999	6	3	100.0	27	26	3.8
800,000 - 899,999	1	4	-75.0	12	7	71.4
900,000 - 999,999	0	0	0.0	9	4	125.0
1,000,000 - 1,249,999	0	0	0.0	2	7	-71.4
1,250,000 - 1,499,999	0	0	0.0	2	2	0.0
1,500,000 +	0	0	0.0	4	5	-20.0
TOTALS	1090	1019	7.0	1877	1821	3.1

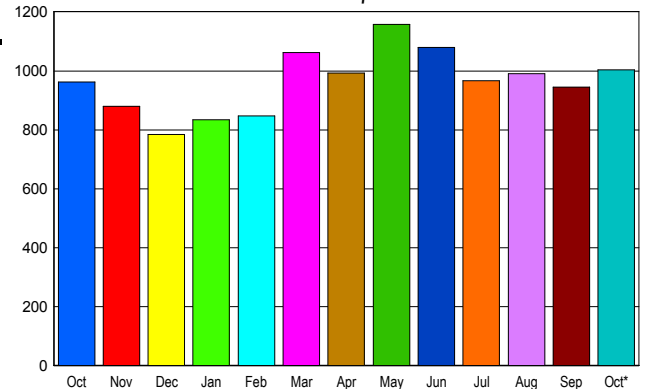
INVENTORY TREND

Listings Active at End of Month



SALES TREND

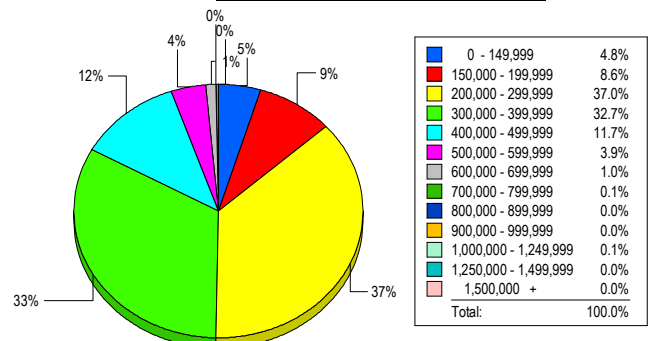
Contracts Ratified Per Month



CONTRACTS

Price Range	New This Month			Year-To-Date		
	2017	2016	% Change	2017	2016	% Change
0 - 149,999	49	87	-43.7	467	839	-44.3
150,000 - 199,999	108	134	-19.4	871	1,177	-26.0
200,000 - 299,999	407	422	-3.6	3,374	3,358	0.5
300,000 - 399,999	269	198	35.9	2,474	1,909	29.6
400,000 - 499,999	121	95	27.4	962	764	25.9
500,000 - 599,999	29	17	70.6	293	195	50.3
600,000 - 699,999	14	6	133.3	107	66	62.1
700,000 - 799,999	4	3	33.3	21	21	0.0
800,000 - 899,999	2	1	100.0	9	6	50.0
900,000 - 999,999	0	0	0.0	7	1	600.0
1,000,000 - 1,249,999	0	0	0.0	2	1	100.0
1,250,000 - 1,499,999	0	0	0.0	1	0	100.0
1,500,000 +	0	0	0.0	1	0	100.0
TOTALS	1003	963	4.2	8589	8337	3.0

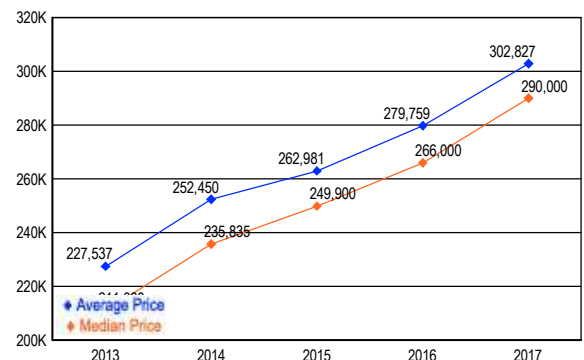
MARKET BY PRICE RANGE



SETTLEMENTS

Price Range	New This Month			Year-to-Date		
	2017	2016	% Change	2017	2016	% Change
0 - 149,999	37	57	-35.1	412	751	-45.1
150,000 - 199,999	66	88	-25.0	786	1,078	-27.1
200,000 - 299,999	285	300	-5.0	3,183	3,017	5.5
300,000 - 399,999	252	197	27.9	2,372	1,778	33.4
400,000 - 499,999	90	66	36.4	910	739	23.1
500,000 - 599,999	30	11	172.7	275	163	68.7
600,000 - 699,999	8	9	-11.1	102	84	21.4
700,000 - 799,999	1	2	-50.0	17	13	30.8
800,000 - 899,999	0	0	0.0	6	4	50.0
900,000 - 999,999	0	0	0.0	7	3	133.3
1,000,000 - 1,249,999	1	0	100.0	2	0	200.0
1,250,000 - 1,499,999	0	0	0.0	1	0	100.0
1,500,000 +	0	0	0.0	1	0	100.0
TOTALS	770	730	5.5	8074	7630	5.8

AVERAGE & MEDIAN PRICE



DATA SOURCE: Metropolitan Regional Information Systems, Inc. (MRIS)

NOTES: Properties not listed through this Multiple Listing Service are not reflected. The term "sales" represents ratified purchase contracts. Current year information is preliminary and subject to revision. Current year-to-date contract information may not equal the sum of the monthly contract totals reported in