

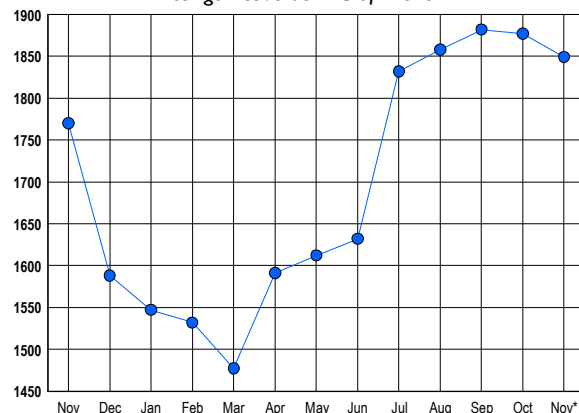


### LISTINGS

Prices Range	New This Month			Total Actives		
	2017	2016	% Change	2017	2016	% Change
0 - 149,999	40	72	-44.4	56	90	-37.8
150,000 - 199,999	93	93	0.0	124	121	2.5
200,000 - 299,999	360	338	6.5	581	559	3.9
300,000 - 399,999	273	230	18.7	511	502	1.8
400,000 - 499,999	126	109	15.6	298	267	11.6
500,000 - 599,999	60	38	57.9	149	124	20.2
600,000 - 699,999	15	16	-6.3	70	66	6.1
700,000 - 799,999	9	4	125.0	30	22	36.4
800,000 - 899,999	2	0	200.0	13	5	160.0
900,000 - 999,999	0	1	-100.0	8	3	166.7
1,000,000 - 1,249,999	0	1	-100.0	2	4	-50.0
1,250,000 - 1,499,999	1	0	100.0	2	2	0.0
1,500,000 +	1	0	100.0	5	5	0.0
<b>TOTALS</b>	<b>980</b>	<b>902</b>	<b>8.6</b>	<b>1849</b>	<b>1770</b>	<b>4.5</b>

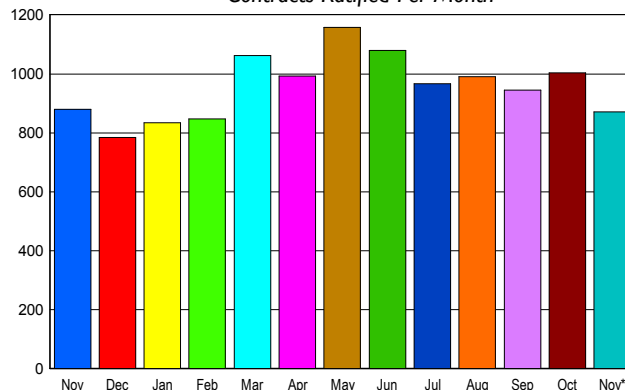
### INVENTORY TREND

Lists Active at End of Month



### SALES TREND

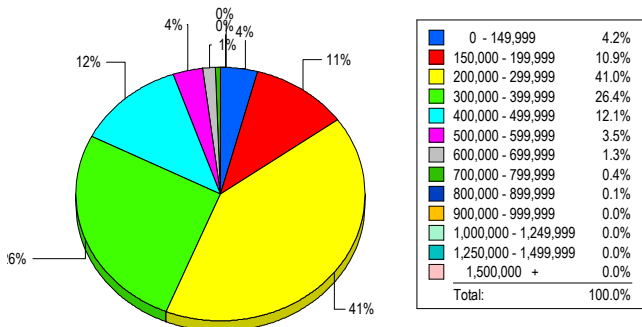
Contracts Ratified Per Month



### CONTRACTS

Price Range	New This Month			Year-To-Date		
	2017	2016	% Change	2017	2016	% Change
0 - 149,999	36	77	-53.2	486	882	-44.9
150,000 - 199,999	100	121	-17.4	949	1,274	-25.5
200,000 - 299,999	359	346	3.8	3,666	3,618	1.3
300,000 - 399,999	241	224	7.6	2,680	2,104	27.4
400,000 - 499,999	81	81	0.0	1,032	841	22.7
500,000 - 599,999	39	20	95.0	328	212	54.7
600,000 - 699,999	9	7	28.6	115	72	59.7
700,000 - 799,999	4	2	100.0	26	23	13.0
800,000 - 899,999	0	0	0.0	9	6	50.0
900,000 - 999,999	1	1	0.0	7	2	250.0
1,000,000 - 1,249,999	0	0	0.0	2	1	100.0
1,250,000 - 1,499,999	0	0	0.0	1	0	100.0
1,500,000 +	0	0	0.0	1	0	100.0
<b>TOTALS</b>	<b>870</b>	<b>879</b>	<b>-1.0</b>	<b>9302</b>	<b>9035</b>	<b>3.0</b>

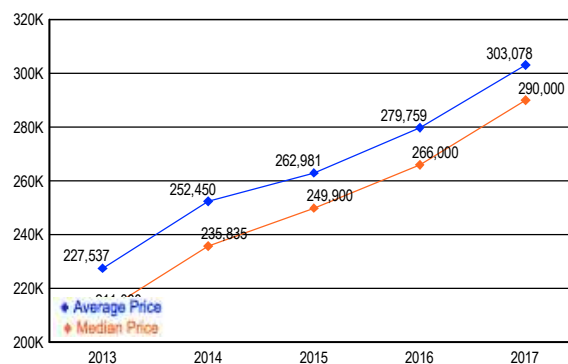
### MARKET BY PRICE RANGE



### SETTLEMENTS

Price Range	New This Month			Year-to-Date		
	2017	2016	% Change	2017	2016	% Change
0 - 149,999	31	42	-26.2	447	800	-44.1
150,000 - 199,999	81	92	-12.0	873	1,174	-25.6
200,000 - 299,999	304	266	14.3	3,501	3,293	6.3
300,000 - 399,999	196	152	28.9	2,588	1,933	33.9
400,000 - 499,999	90	68	32.4	1,019	811	25.6
500,000 - 599,999	26	10	160.0	306	175	74.9
600,000 - 699,999	10	6	66.7	112	91	23.1
700,000 - 799,999	3	4	-25.0	21	17	23.5
800,000 - 899,999	1	0	100.0	7	4	75.0
900,000 - 999,999	0	0	0.0	7	3	133.3
1,000,000 - 1,249,999	0	0	0.0	2	0	200.0
1,250,000 - 1,499,999	0	0	0.0	1	0	100.0
1,500,000 +	0	0	0.0	1	0	100.0
<b>TOTALS</b>	<b>742</b>	<b>640</b>	<b>15.9</b>	<b>8885</b>	<b>8301</b>	<b>7.0</b>

### AVERAGE & MEDIAN PRICE



DATA SOURCE: Metropolitan Regional Information Systems, Inc. (MRIS)

NOTES: Properties not listed through this Multiple Listing Service are not reflected. The term "sales" represents ratified purchase contracts. Current year information is preliminary and subject to revision. Current year-to-date contract information may not equal the sum of the monthly contract totals reported in