

PRINCE GEORGES COUNTY Residential Market Report



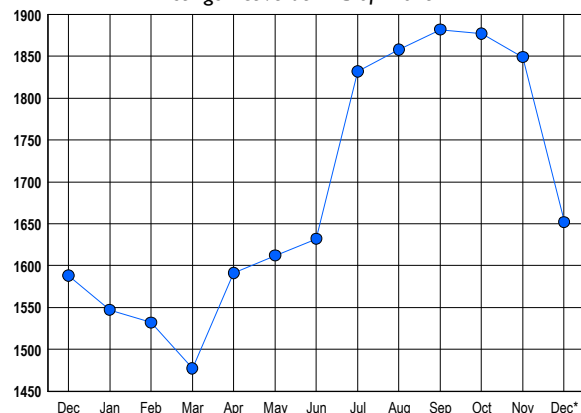
HOUSING REPORT Single Family Homes December 2017

LISTINGS

Prices Range	New This Month			Total Actives		
	2017	2016	% Change	2017	2016	% Change
0 - 149,999	38	53	-28.3	55	84	-34.5
150,000 - 199,999	62	81	-23.5	111	118	-5.9
200,000 - 299,999	299	266	12.4	527	481	9.6
300,000 - 399,999	210	182	15.4	434	459	-5.4
400,000 - 499,999	103	75	37.3	270	230	17.4
500,000 - 599,999	22	29	-24.1	130	113	15.0
600,000 - 699,999	17	13	30.8	65	61	6.6
700,000 - 799,999	6	3	100.0	33	20	65.0
800,000 - 899,999	3	2	50.0	12	6	100.0
900,000 - 999,999	0	1	-100.0	6	4	50.0
1,000,000 - 1,249,999	0	1	-100.0	2	5	-60.0
1,250,000 - 1,499,999	0	0	0.0	1	2	-50.0
1,500,000 +	2	0	200.0	6	5	20.0
TOTALS	762	706	7.9	1652	1588	4.0

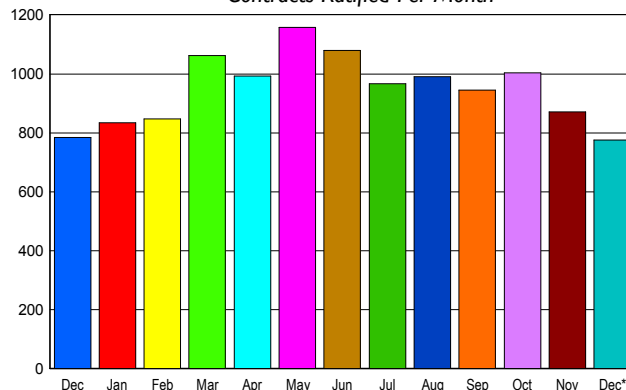
INVENTORY TREND

Listsings Active at End of Month



SALES TREND

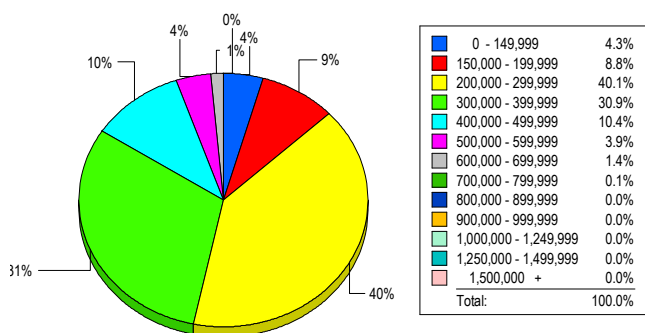
Contracts Ratified Per Month



CONTRACTS

Price Range	New This Month			Year-To-Date		
	2017	2016	% Change	2017	2016	% Change
0 - 149,999	38	70	-45.7	518	930	-44.3
150,000 - 199,999	70	104	-32.7	1,004	1,345	-25.4
200,000 - 299,999	309	317	-2.5	3,918	3,850	1.8
300,000 - 399,999	230	192	19.8	2,884	2,263	27.4
400,000 - 499,999	84	70	20.0	1,109	903	22.8
500,000 - 599,999	31	22	40.9	359	238	50.8
600,000 - 699,999	10	7	42.9	129	84	53.6
700,000 - 799,999	3	0	300.0	27	24	12.5
800,000 - 899,999	0	1	-100.0	9	6	50.0
900,000 - 999,999	0	1	-100.0	7	2	250.0
1,000,000 - 1,249,999	0	1	-100.0	2	2	0.0
1,250,000 - 1,499,999	0	0	0.0	1	0	100.0
1,500,000 +	0	0	0.0	1	0	100.0
TOTALS	775	785	-1.3	9968	9647	3.3

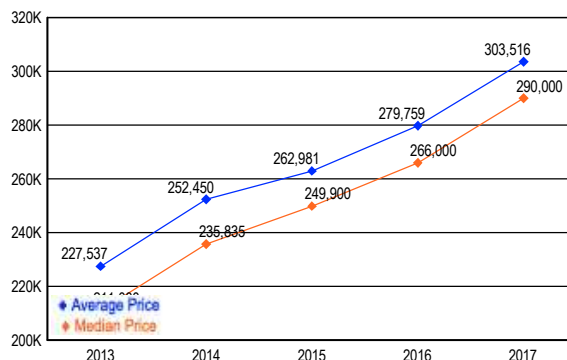
MARKET BY PRICE RANGE



SETTLEMENTS

Price Range	New This Month			Year-to-Date		
	2017	2016	% Change	2017	2016	% Change
0 - 149,999	32	51	-37.3	481	855	-43.7
150,000 - 199,999	65	86	-24.4	941	1,266	-25.7
200,000 - 299,999	297	348	-14.7	3,813	3,654	4.4
300,000 - 399,999	229	189	21.2	2,834	2,135	32.7
400,000 - 499,999	77	79	-2.5	1,105	896	23.3
500,000 - 599,999	29	21	38.1	338	198	70.7
600,000 - 699,999	10	7	42.9	124	101	22.8
700,000 - 799,999	1	3	-66.7	23	21	9.5
800,000 - 899,999	0	0	0.0	7	4	75.0
900,000 - 999,999	0	0	0.0	7	3	133.3
1,000,000 - 1,249,999	0	0	0.0	2	0	200.0
1,250,000 - 1,499,999	0	0	0.0	1	0	100.0
1,500,000 +	0	0	0.0	1	0	100.0
TOTALS	740	784	-5.6	9677	9133	6.0

AVERAGE & MEDIAN PRICE



DATA SOURCE: Metropolitan Regional Information Systems, Inc. (MRIS)

NOTES: Properties not listed through this Multiple Listing Service are not reflected. The term "sales" represents ratified purchase contracts. Current year information is preliminary and subject to revision. Current year- to- date contract information may not equal the sum of the monthly contract totals reported in