

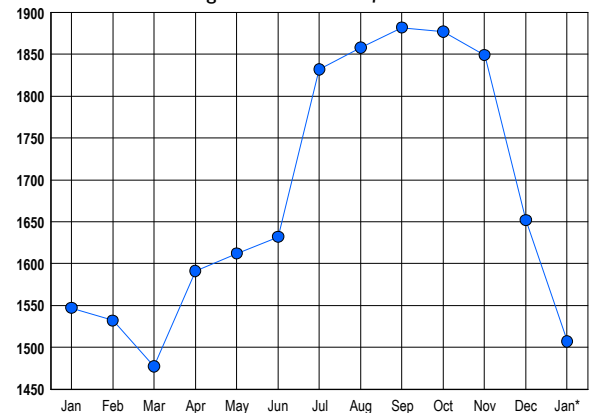


### LISTINGS

Prices Range	New This Month			Total Actives		
	2018	2017	% Change	2018	2017	% Change
0 - 149,999	34	56	-39.3	54	89	-39.3
150,000 - 199,999	65	96	-32.3	90	103	-12.6
200,000 - 299,999	301	336	-10.4	466	503	-7.4
300,000 - 399,999	215	208	3.4	410	403	1.7
400,000 - 499,999	91	84	8.3	244	233	4.7
500,000 - 599,999	35	31	12.9	119	108	10.2
600,000 - 699,999	21	17	23.5	65	64	1.6
700,000 - 799,999	3	4	-25.0	30	19	57.9
800,000 - 899,999	1	1	0.0	11	5	120.0
900,000 - 999,999	1	1	0.0	7	6	16.7
1,000,000 - 1,249,999	0	0	0.0	2	5	-60.0
1,250,000 - 1,499,999	1	1	0.0	2	3	-33.3
1,500,000 +	0	1	-100.0	7	6	16.7
<b>TOTALS</b>	<b>768</b>	<b>836</b>	<b>-8.1</b>	<b>1507</b>	<b>1547</b>	<b>-2.6</b>

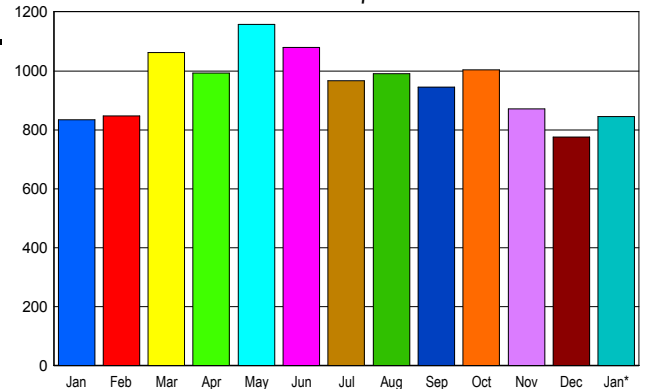
### INVENTORY TREND

Lists Active at End of Month



### SALES TREND

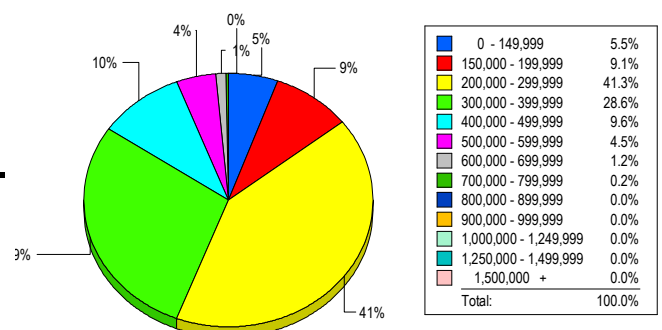
Contracts Ratified Per Month



### CONTRACTS

Price Range	New This Month			Year-To-Date		
	2018	2017	% Change	2018	2017	% Change
0 - 149,999	38	64	-40.6	38	64	-40.6
150,000 - 199,999	88	116	-24.1	88	116	-24.1
200,000 - 299,999	357	327	9.2	357	327	9.2
300,000 - 399,999	222	213	4.2	222	213	4.2
400,000 - 499,999	99	80	23.8	99	80	23.8
500,000 - 599,999	24	23	4.3	24	23	4.3
600,000 - 699,999	13	6	116.7	13	6	116.7
700,000 - 799,999	0	1	-100.0	0	1	-100.0
800,000 - 899,999	2	2	0.0	2	2	0.0
900,000 - 999,999	1	1	0.0	1	1	0.0
1,000,000 - 1,249,999	0	0	0.0	0	0	0.0
1,250,000 - 1,499,999	0	1	-100.0	0	1	-100.0
1,500,000 +	0	0	0.0	0	0	0.0
<b>TOTALS</b>	<b>844</b>	<b>834</b>	<b>1.2</b>	<b>844</b>	<b>834</b>	<b>1.2</b>

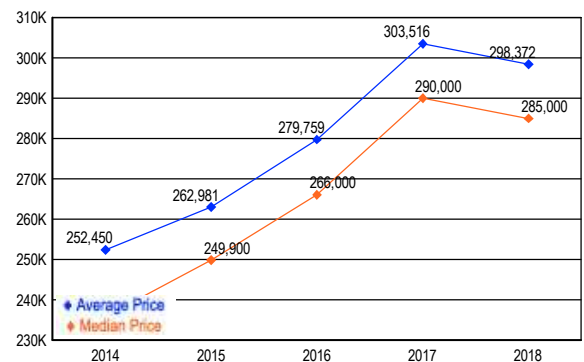
### MARKET BY PRICE RANGE



### SETTLEMENTS

Price Range	New This Month			Year-to-Date		
	2018	2017	% Change	2018	2017	% Change
0 - 149,999	32	41	-22.0	32	41	-22.0
150,000 - 199,999	53	76	-30.3	53	76	-30.3
200,000 - 299,999	241	244	-1.2	241	244	-1.2
300,000 - 399,999	167	157	6.4	167	157	6.4
400,000 - 499,999	56	49	14.3	56	49	14.3
500,000 - 599,999	26	11	136.4	26	11	136.4
600,000 - 699,999	7	8	-12.5	7	8	-12.5
700,000 - 799,999	1	1	0.0	1	1	0.0
800,000 - 899,999	0	1	-100.0	0	1	-100.0
900,000 - 999,999	0	0	0.0	0	0	0.0
1,000,000 - 1,249,999	0	0	0.0	0	0	0.0
1,250,000 - 1,499,999	0	0	0.0	0	0	0.0
1,500,000 +	0	0	0.0	0	0	0.0
<b>TOTALS</b>	<b>583</b>	<b>588</b>	<b>-0.9</b>	<b>583</b>	<b>588</b>	<b>-0.9</b>

### AVERAGE & MEDIAN PRICE



DATA SOURCE: Metropolitan Regional Information Systems, Inc. (MRIS)

NOTES: Properties not listed through this Multiple Listing Service are not reflected. The term "sales" represents ratified purchase contracts. Current year information is preliminary and subject to revision. Current year-to-date contract information may not equal the sum of the monthly contract totals reported in